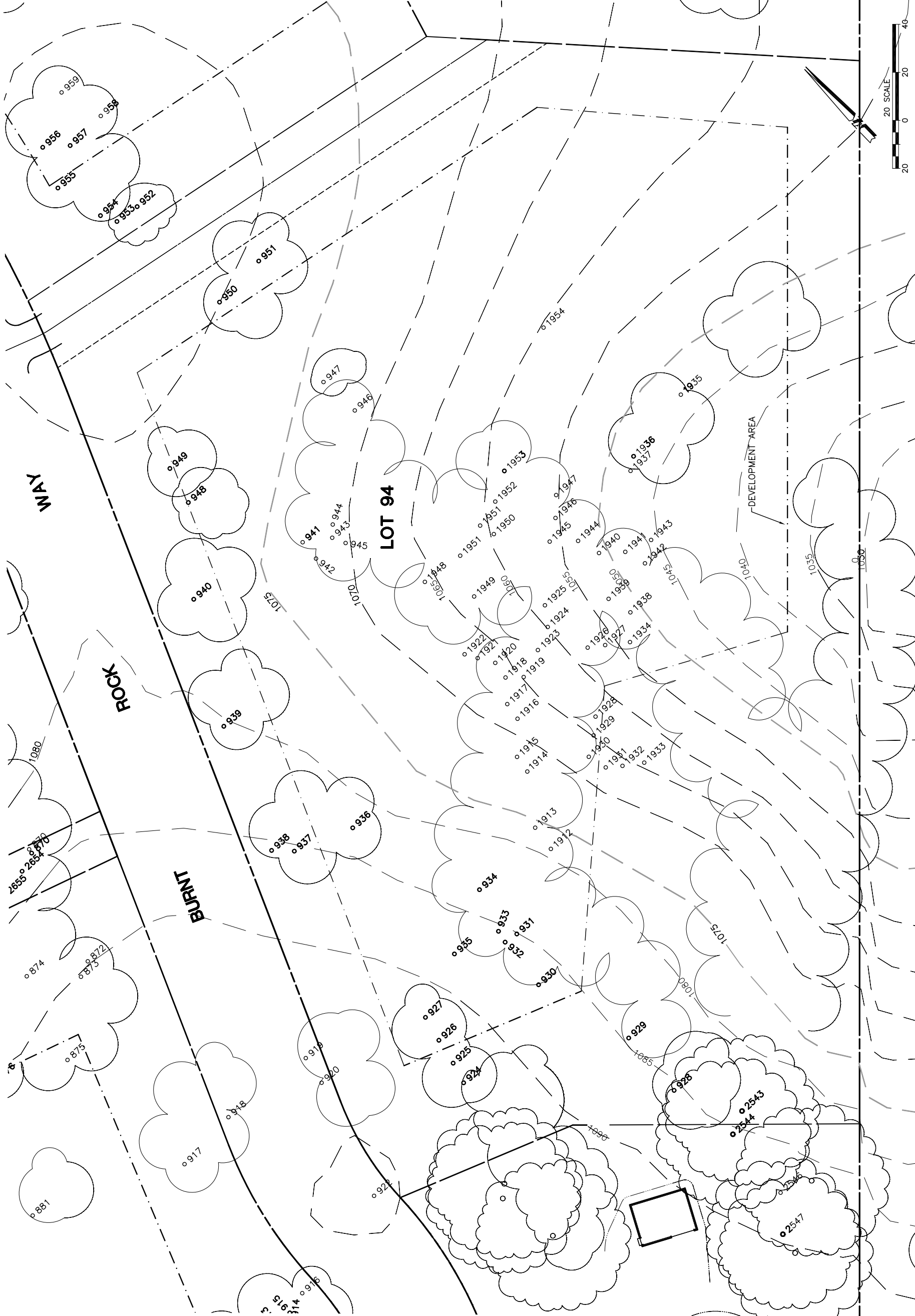


Lot 94				Must Save (visual mitigation)
Tree	Diameter	Type	Health	
928	6	BLUE	40%	
929	16 (2)	BLUE	72%	
930	15	BLUE	64%	
931	9	BLUE	20%	
932	12	BLUE	20%	
933	16	BLUE	44%	
934	15	BLUE	64%	
935	14 (2)	BLUE	24%	
936	15 (2)	BLUE	68%	
937	10	BLUE	0%	
938	21	BLUE	68%	
939	14	BLUE	80%	
940	20	BLUE	68%	
941	12	BLUE	56%	
942	4	BLUE	0%	
943	16	BLUE	48%	
944	10	BLUE	20%	
945	10	BLUE	20%	
946	20	BLUE	60%	
947	12	BLUE	36%	
948	8	BLUE	32%	
949	12	BLUE	60%	
950	13	BLUE	48%	
951	10	BLUE	48%	
1912	7	BLUE	30%	
1913	6	BLUE	35%	
1914	3	BLUE	20%	
1915	6	BLUE	40%	
1916	3	BLUE	30%	
1917	9	BLUE	35%	
1918	5	BLUE	35%	
1919	8	BLUE	55%	
1920	4	BLUE	40%	
1921	12	BLUE	55%	
1922	8	BLUE	45%	
1923	11	BLUE	60%	
1924	4	BLUE	50%	
1925	7	BLUE	40%	
1926	17	BLUE	55%	
1927	8	BLUE	45%	
1928	8	BLUE	50%	
1929	13	BLUE	60%	
1930	14	BLUE	60%	
1931	13	BLUE	55%	
1932	8	BLUE	35%	
1933	9	BLUE	45%	
1934	9	BLUE	40%	
1935	24	BLUE	75%	
1936	14	BLUE	70%	
1937	16	BLUE	70%	
1938	8	BLUE	55%	
1939	8	BLUE	50%	
1940	12	BLUE	65%	
1941	10	BLUE	40%	
1942	9	BLUE	35%	
1943	12	BLUE	50%	
1944	4	BLUE	65%	
1945	5	BLUE	65%	
1946	12	BLUE	45%	
1947	15	BLUE	60%	
1948	5	BLUE	65%	
1949	23	BLUE	55%	
1950	13	BLUE	60%	
1951	5	BLUE	60%	
1952	17	BLUE	65%	
1953	6	BLUE	65%	
1954	19	BLUE	75%	
2543	14	BLUE	45%	



REV.	BY	DATE	DESCRIPTION

NOTE: TREE LOCATIONS WITHIN ALL TREE LOCATIONS WITHIN BUILDING ENVELOPE TO BE VERIFIED PRIOR TO PERMITTING

NOTE: ALL TREES OUTSIDE OF BUILDING ENVELOPE TO BE PROTECTED. TREES MAY BE REMOVED BY PERMIT IF NECESSARY FOR DRIVEWAY ACCESS BUT REMOVAL WILL BE MINIMIZED.

NOTE: TREE DATA BASED ON C&G TREE ASSESSMENT BY JACK BRAZEL ON 10.24.00.

32234-000\ALHOUSE\LOTS\



eda  
civil engineers • land planners  
1914 26th Street, Suite 200  
San Diego, CA 92108  
Tel: 619.594.8888 • Fax: 619.594.8889  
www.eda-engineers.com