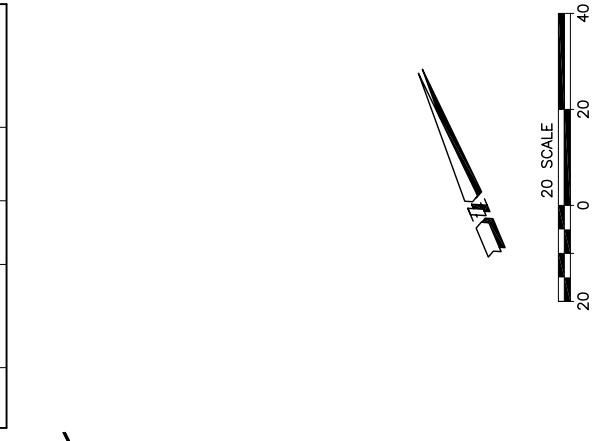
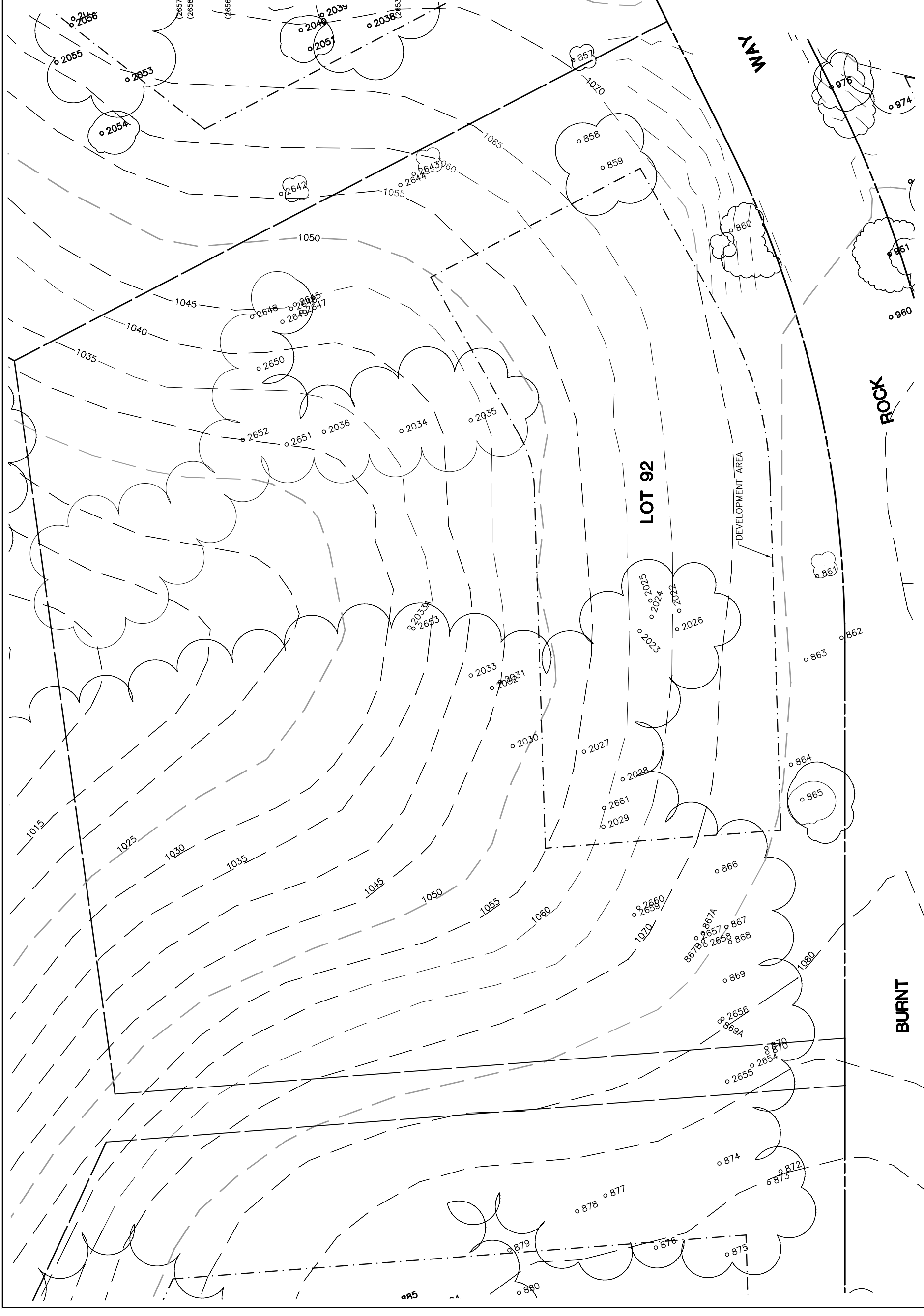


Lot 92			
Tree	Diameter	Type	Health
858	7	BLUE	24%
859	20	BLUE	80%
860	14	BLUE	48%
861	9	BLUE	56%
862	26	BLUE	28%
863	28	BLUE	32%
864	8	BLUE	28%
865	17	BLUE	60%
866	19	BLUE	68%
867A	12	BLUE	32%
867B	9	BLUE	24%
867	8	BLUE	24%
868	9	BLUE	16%
869A	9	BLUE	36%
869	6	BLUE	16%
870	10	BLUE	24%
2022	22	BLUE	40%
2023	7	BLUE	12%
2024	19	BLUE	60%
2025	4	BLUE	8%
2026	4	BLUE	8%
2027	18	BLUE	72%
2028	18	BLUE	48%
2029	11	BLUE	30%
2030	24	BLUE	52%
2031	12	BLUE	56%
2032	6	BLUE	8%
2033A	8	BLUE	40%
2033	8	BLUE	32%
2034	20	BLUE	40%
2035	24	BLUE	80%
2036	24	BLUE	68%
2643	18	BLUE	50%
2644	8	BLUE	30%
2645	12	BLUE	40%
2646	10	BLUE	25%
2647	6	BLUE	25%
2648	12	BLUE	20%
2649	8	BLUE	25%
2650	10	BLUE	40%
2651	13	BLUE	37%
2652	14	BLUE	25%
2659	14	BLUE	20%
2660	14	BLUE	20%
2661	7	BLUE	20%
2030	4	BLUE	52%



S H E E T
1
O F 1



INDIVIDUAL SITE PLANS
SANTA YSABEL RANCH
COAL 99-0229
LOT 92



REV.	BY	DATE	DESCRIPTION

NOTE: ALL TREE LOCATIONS WITHIN BUILDING ENVELOPE TO BE VERIFIED PRIOR TO PERMITTING

32234-000\ALPHOUSE\LOTS\ PLOT: 7/26/02

NOTE: ALL TREES OUTSIDE OF BUILDING ENVELOPE TO BE PROTECTED. TREES MAY BE REMOVED BY PERMIT IF NECESSARY FOR DRIVEWAY ACCESS BUT REMOVAL WILL BE MINIMIZED.

NOTE: TREE DATA BASED ON OAK TREE ASSESSMENT BY JACK BRAZEL ON 10/24/00.