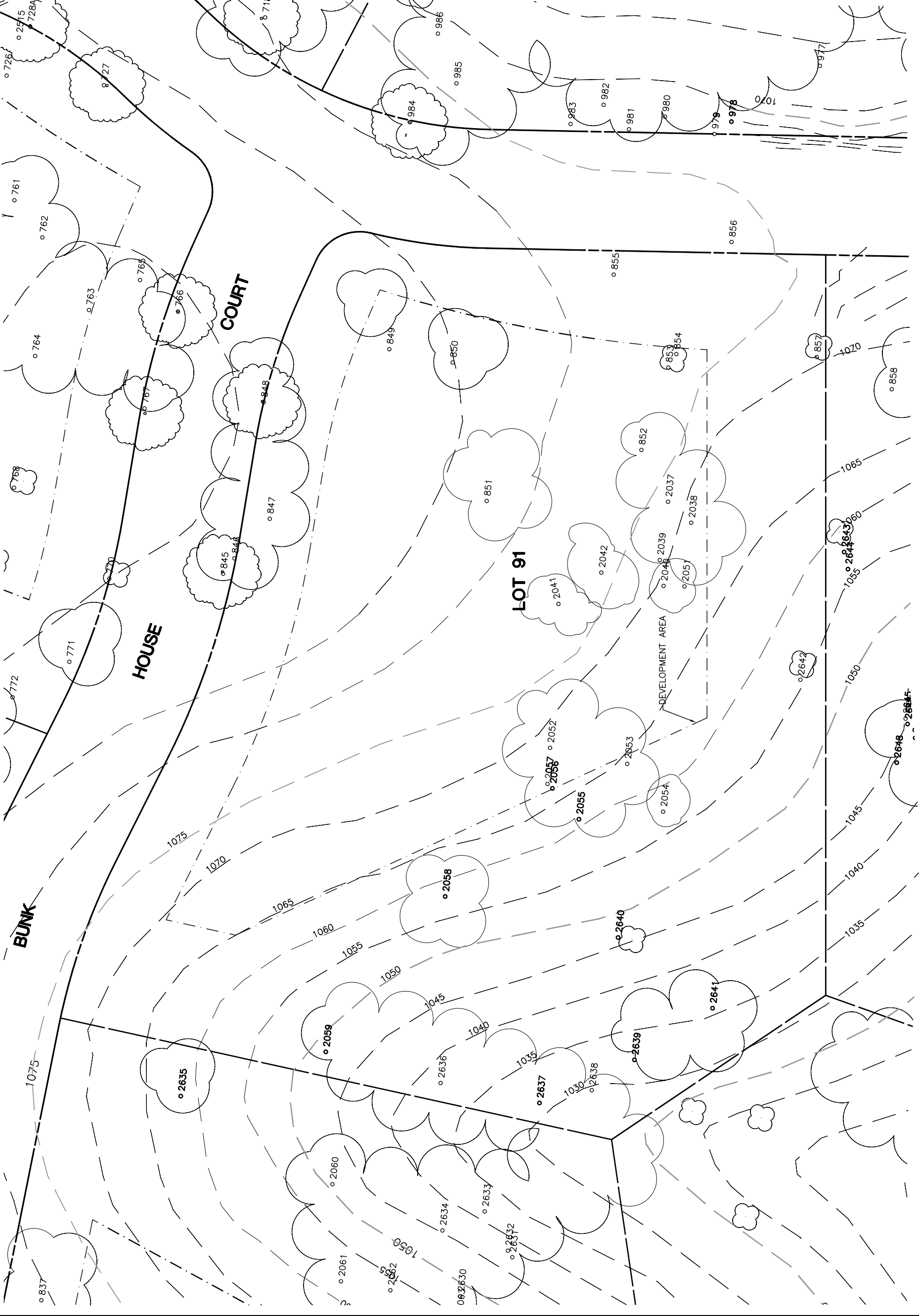


Lot 91				
Tree	Diameter	Type	Health	Must Save (visual mitigation)
845	16	BLUE	8%	X
846	9	BLUE	12%	X
847	24	BLUE	80%	X
848	22	BLUE	80%	X
849	17	BLUE	64%	
850	16	BLUE	24%	
851	20	BLUE	80%	
852	16	BLUE	64%	
853	12	BLUE	64%	
854	10	BLUE	20%	
855	19	BLUE	52%	
857	14	BLUE	72%	
2037	16	BLUE	44%	
2038	30	BLUE	44%	
2039	18	BLUE	40%	
2040	5	BLUE	8%	
2041	13	BLUE	70%	
2042	12	BLUE	60%	
2051	20	BLUE	68%	
2052	20	BLUE	80%	
2053	12	BLUE	30%	
2054	6	BLUE	60%	
2055	16	BLUE	52%	
2056	9	BLUE	40%	
2057	10	BLUE	32%	
2058	26	BLUE	80%	
2059	20	BLUE	80%	
2636	23	BLUE	45%	
2637	24	BLUE	40%	
2638	17	BLUE	42%	
2639	24	BLUE	38%	
2640	16	BLUE	30%	
2641	26	BLUE	50%	
2642	12	BLUE	25%	




**NOTE:**  
TREE DATA BASED ON OAK TREE ASSESSMENT BY JACK BRAZEL ON 10.24.00.

**NOTE:**  
ALL TREES OUTSIDE OF BUILDING ENVELOPE TO BE PROTECTED. TREES MAY BE REMOVED BY PERMIT IF NECESSARY FOR DRIVEWAY ACCESS BUT REMOVAL WILL BE MINIMIZED.

**NOTE:**  
ALL TREE LOCATIONS WITHIN BUILDING ENVELOPE TO BE VERIFIED PRIOR TO PERMITTING

32234-000\ALHOUSE\LOTS\ PLOT: 7/26/02

REV.	BY	DATE	DESCRIPTION



eda  
civil engineers • land planners  
1910 85th Street, Suite 100  
San Diego, CA 92123  
tel: 619-594-9888 • email: info@eda.com

**INDIVIDUAL SITE PLANS**  
**SANTA YSABEL RANCH**  
**COAL 99-0229**  
**LOT 91**

**SHEET**  
**1**  
**OF 1**