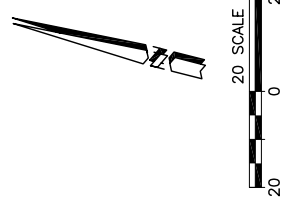
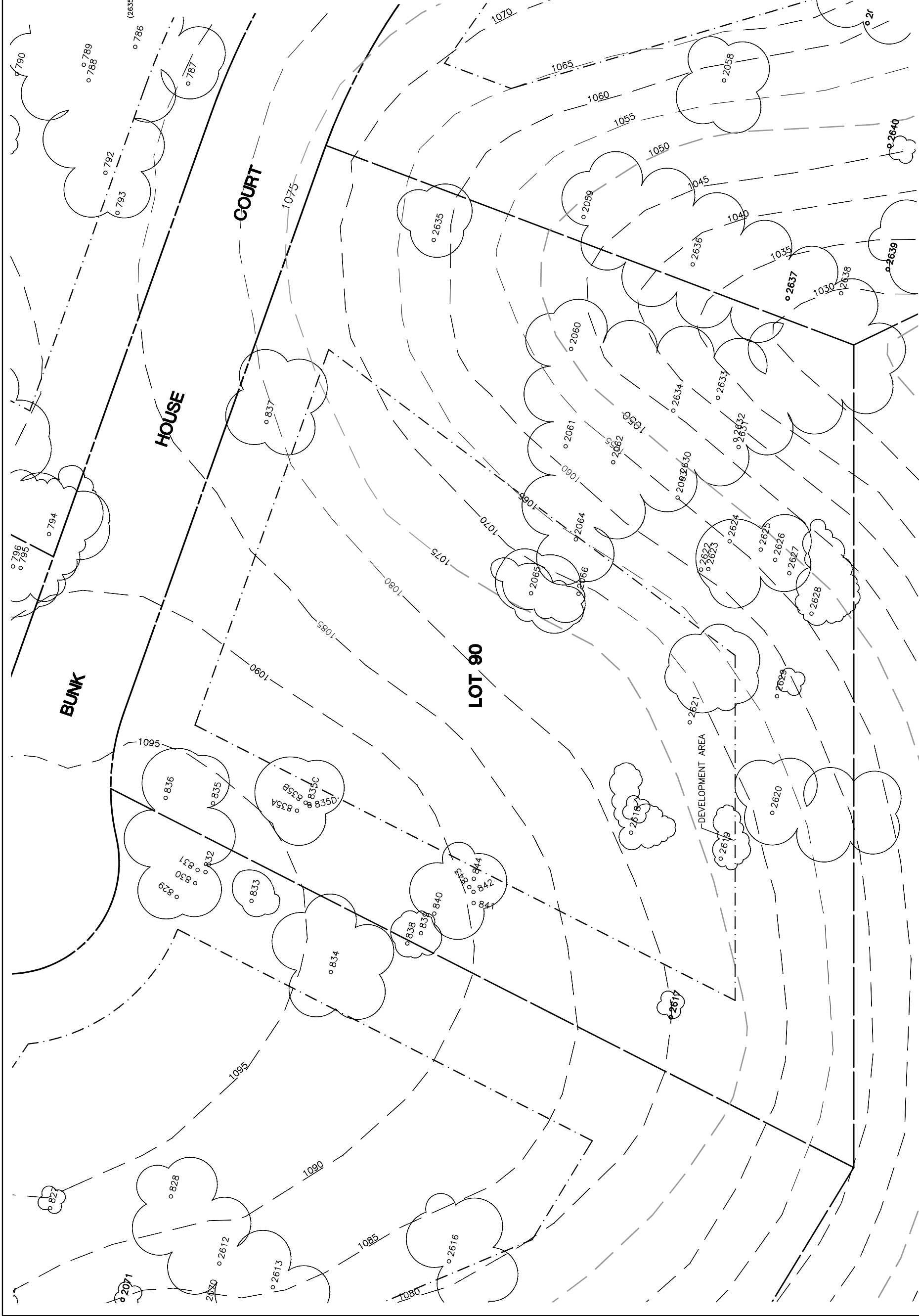


Lot 90				
Tree	Diameter	Type	Health	Must Save (visual mitigation)
835A	15	BLUE	40%	
835B	12	BLUE	32%	
835C	8	BLUE	28%	
835	9	BLUE	40%	
836	10	BLUE	72%	
837A	14	BLUE	64%	
837	20	VALLEY	52%	
838	9	BLUE	24%	
839	6	BLUE	0%	
840	6	BLUE	8%	
841	8	BLUE	24%	
842	13	BLUE	52%	
843	12	BLUE	44%	
844	8	BLUE	24%	
2060	18	BLUE	60%	
2061	24	BLUE	52%	
2062	20	BLUE	60%	
2063	13	BLUE	48%	
2064	24	BLUE	80%	
2065	16	BLUE	68%	
2066	12	BLUE	44%	
2067	13	BLUE	45%	
2068	15	BLUE	35%	
2069	12	BLUE	30%	
2070	18	BLUE	35%	
2071	24	BLUE	40%	
2072	12	BLUE	30%	
2073	6	BLUE	20%	
2074	17	BLUE	15%	
2075	9	BLUE	15%	
2076	10	BLUE	15%	
2077	12	BLUE	25%	
2078	18	BLUE	25%	
2079	16	BLUE	25%	
2080	7	BLUE	20%	
2081	10	BLUE	15%	
2082	8	BLUE	10%	
2083	20	BLUE	40%	
2084	18	BLUE	35%	



NOTE: TREE DATA BASED ON OAK TREE ASSESSMENT BY JACK BRAZEL ON 10.24.00.

NOTE: ALL TREES OUTSIDE OF BUILDING ENVELOPE TO BE PROTECTED. TREES MAY BE REMOVED BY PERMIT IF NECESSARY FOR DRIVEWAY ACCESS BUT REMOVAL WILL BE MINIMIZED.

NOTE: ALL TREE LOCATIONS WITHIN BUILDING ENVELOPE TO BE VERIFIED PRIOR TO PERMITTING

REV. BY DATE DESCRIPTION

PLT'D: 7/26/02

INDIVIDUAL SITE PLANS
SANTA YSABEL RANCH
COAL 99-0229
LOT 90

SHEET
1
 OF 1