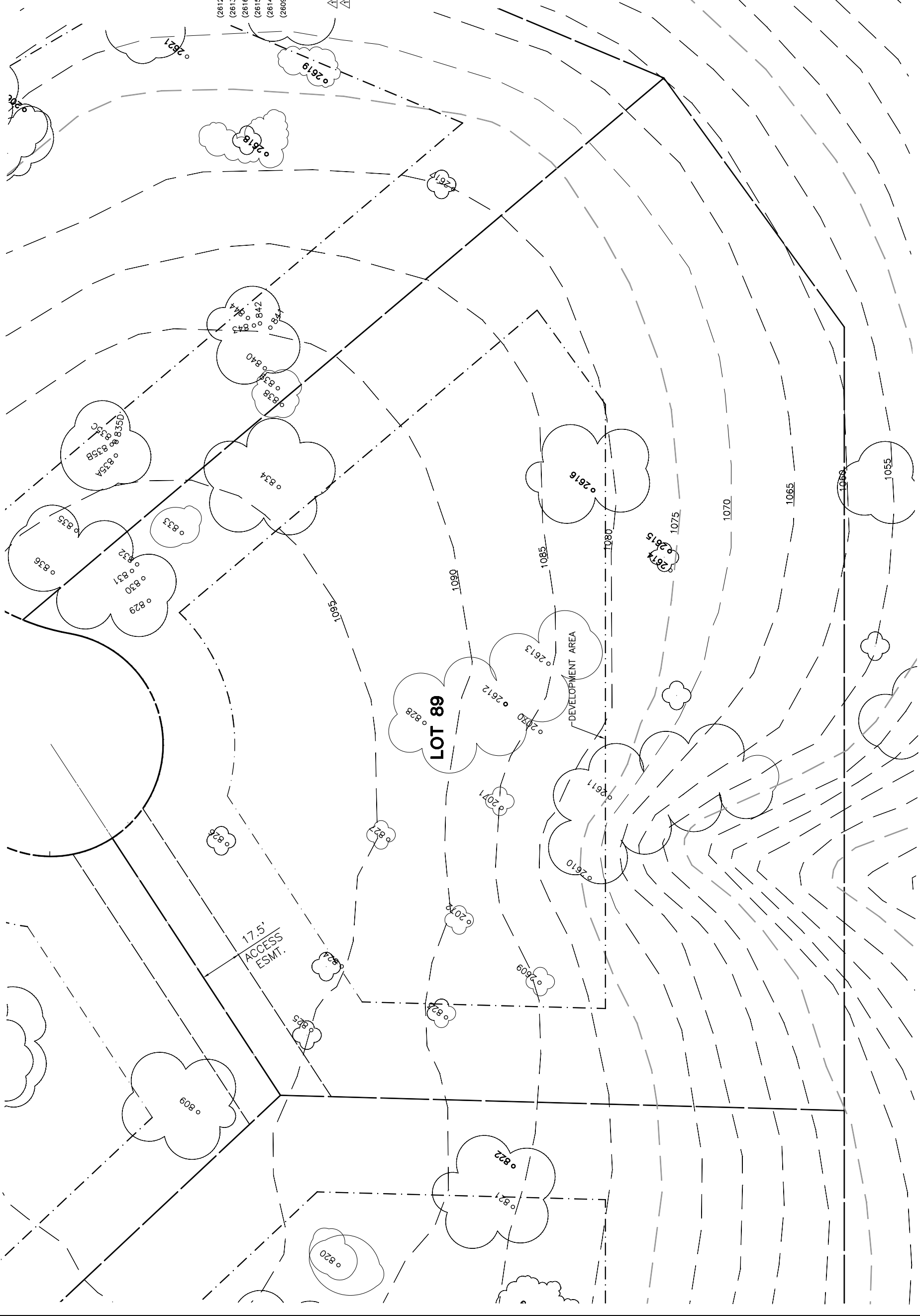


| Lot 89 |          |      |        |                               |   |
|--------|----------|------|--------|-------------------------------|---|
| Tree   | Diameter | Type | Health | Must Save (visual mitigation) |   |
| 823    | 26       | BLUE | 80%    | X                             |   |
| 824    | 14       | BLUE | 52%    | X                             |   |
| 825    | 21       | BLUE | 72%    | X                             |   |
| 826    | 14       | BLUE | 80%    | X                             |   |
| 827    | 18       | BLUE | 80%    | X                             |   |
| 828    | 24       | BLUE | 60%    | X                             |   |
| 829    | 14       | BLUE | 36%    | X                             |   |
| 830    | 12       | BLUE | 40%    | X                             |   |
| 831    | 10       | BLUE | 48%    | X                             |   |
| 832    | 6        | BLUE | 4%     | X                             |   |
| 833    | 10       | BLUE | 32%    | X                             |   |
| 834    | 25       | BLUE | 80%    | X                             |   |
| 838    | 9        | BLUE | 24%    | X                             |   |
| (2612) | 2070A    | 14   | BLUE   | 60%                           | X |
| (2613) | 2070B    | 20   | BLUE   | 80%                           | X |
| (2616) | 2070C    | 22   | BLUE   | 68%                           | X |
| (2615) | 2070D    | 8    | BLUE   | 60%                           | X |
| (2614) | 2070E    | 8    | BLUE   | 60%                           | X |
| (2609) | 2070F    | 23   | BLUE   | 35%                           | X |
| 2070   | 9        | BLUE | 40%    | X                             |   |
| 2071   | 14       | BLUE | 32%    | X                             |   |
| 2072   | 10       | BLUE | 52%    | X                             |   |
| 2610   | 15       | BLUE | 65%    | X                             |   |
| 2611   | 20       | BLUE | 80%    | X                             |   |



INDIVIDUAL SITE PLANS  
 SANTA YSABEL RANCH  
 COAL 99-0229  
 LOT 89



| REV. | BY | DATE     | DESCRIPTION    |
|------|----|----------|----------------|
| 1    |    | 05.16.03 | PER CONDITIONS |

NOTE: ALL TREES OUTSIDE OF BUILDING ENVELOPE TO BE PROTECTED. TREES MAY BE REMOVED BY PERMIT IF NECESSARY FOR DRIVEWAY ACCESS BUT REMOVAL WILL BE MINIMIZED.

NOTE: TREE DATA BASED ON OAK TREE ASSESSMENT BY JACK BRAZEL ON 10.24.00.

NOTE: ALL TREES WITHIN BUILDING ENVELOPE TO BE VERIFIED PRIOR TO PERMITTING