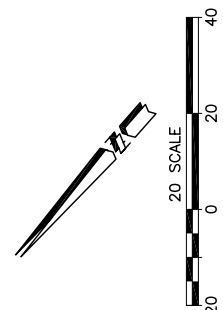
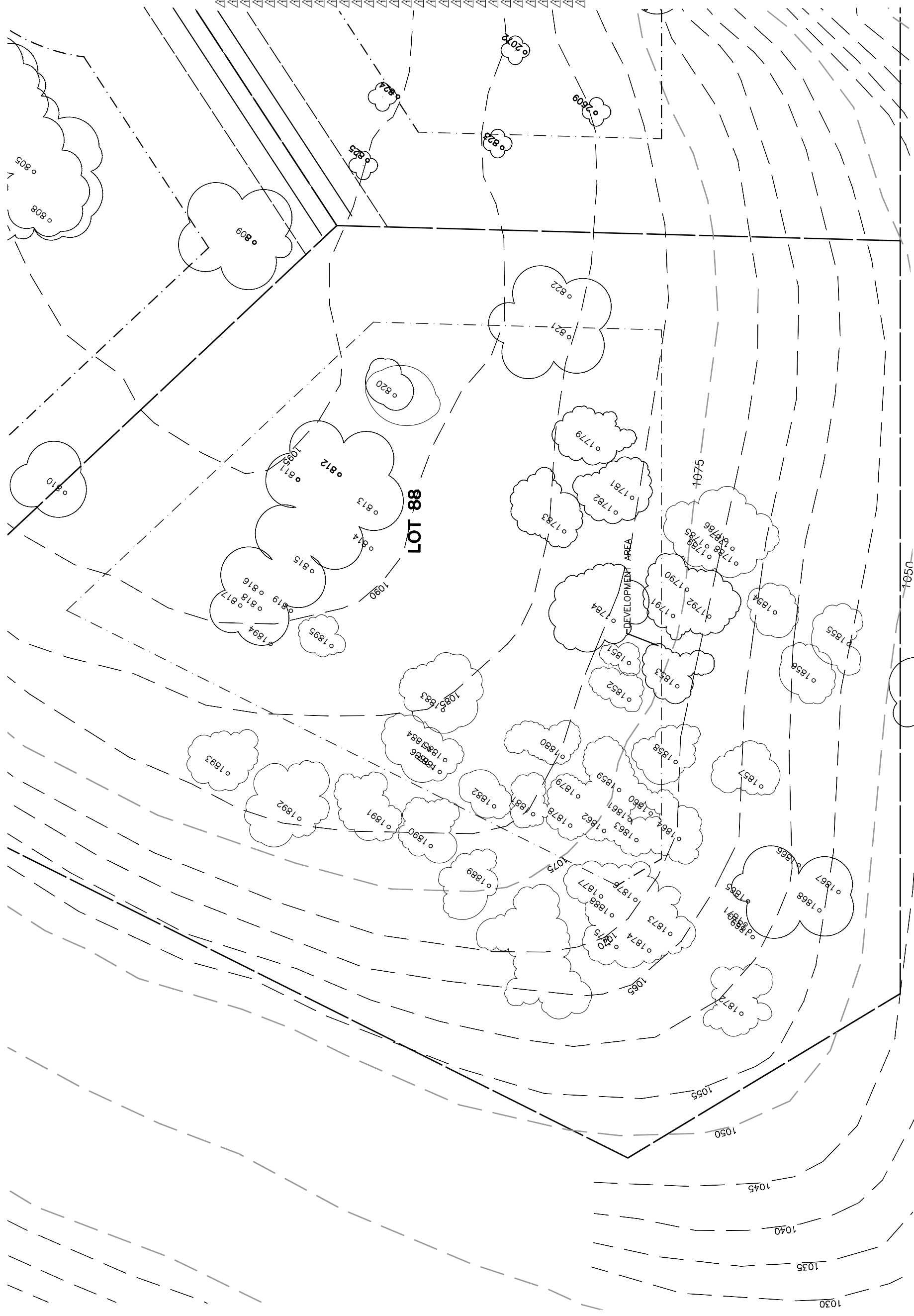


Lot 88				
Tree	Diameter	Type	Health	Must Save (visual mitigation)
810	12	BLUE	80%	X
811	11	BLUE	40%	
812	17	BLUE	48%	
813	22	BLUE	48%	
814	12	BLUE	16%	
815	14	BLUE	32%	
816	13	BLUE	48%	
817	9	BLUE	12%	
818	9	BLUE	28%	
819	10	BLUE	24%	
820	6	BLUE	76%	
821	17	BLUE	80%	X
822	9	BLUE	20%	X
1894	4	BLUE	25%	X
1895	8	BLUE	20%	X
1779	12	BLUE	60%	X
1781	10	BLUE	55%	X
1782	14	BLUE	65%	X
1783	18	BLUE	80%	X
1784	20	BLUE	80%	X
1791	10	BLUE	45%	X
1851	8	BLUE	25%	X
1852	10	BLUE	30%	X
1853	22	BLUE	80%	X
1858	13	BLUE	70%	X
1859	14	BLUE	60%	X
1860	12	BLUE	25%	X
1861	18	BLUE	40%	X
1862	14	BLUE	45%	X
1863	8	BLUE	45%	X
1864	12	BLUE	60%	X
1876	9	BLUE	60%	X
1877	10	BLUE	60%	X
1878	10	BLUE	60%	X
1879	7	BLUE	40%	X
1880	12	BLUE	75%	X
1881	12	BLUE	75%	X
1882	34	BLUE	20%	X
1883	20	BLUE	75%	X
1884	13	BLUE	60%	X
1885	10	BLUE	55%	X
1886	14	BLUE	60%	X
1887	7	BLUE	35%	X



REV.	BY	DATE	DESCRIPTION
1		05.16.03	PER CONDITIONS

NOTE: ALL TREES OUTSIDE OF BUILDING ENVELOPE TO BE PROTECTED. TREES MAY BE REMOVED BY PERMIT IF NECESSARY FOR DRIVEWAY ACCESS BUT REMOVAL WILL BE MINIMIZED.

NOTE: ALL TREE LOCATIONS WITHIN BUILDING ENVELOPE TO BE VERIFIED PRIOR TO PERMITTING

NOTE: DATA BASED ON OAK TREE ASSESSMENT BY JACK BRAZEL ON 10.24.00.