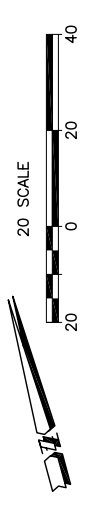
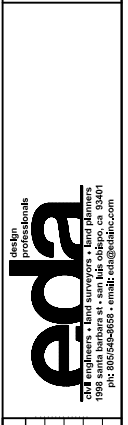


Lot 86				Must Save (visual mitigation)
Tree	Diameter	Type	Health	
773	19	BLUE	68%	
774	9	BLUE	40%	
775	26	BLUE	72%	
780	16	BLUE	24%	
781	16	BLUE	24%	
782	20	BLUE	40%	
783	13	BLUE	56%	
784	11	BLUE	36%	
785	9	BLUE	36%	
786	17	BLUE	40%	
787	20	BLUE	60%	
788	20	BLUE	64%	
789	7	BLUE	4%	
790	18	BLUE	68%	
791	17	BLUE	48%	
792	16	BLUE	64%	
793	14	BLUE	60%	
794	22	BLUE	28%	
798	18	BLUE	72%	
799	10	BLUE	28%	
800	16	BLUE	28%	
801	16	BLUE	44%	
2082	30	BLUE	32%	
2083	10	BLUE	36%	
2084	13	BLUE	48%	
2085A	9	BLUE	60%	(2524)
2085B	9	BLUE	60%	(2118)
2085	14	BLUE	32%	
2086	19	BLUE	60%	
2087	8	BLUE	24%	
2088A	6	BLUE	8%	(2557)
2088	6	BLUE	20%	
2089	6	BLUE	24%	
2090	8	BLUE	24%	
2091	9	BLUE	32%	
2092	10	BLUE	24%	
2093	24	BLUE	60%	
2094	24	BLUE	56%	
2095	30	BLUE	80%	
2096A	8	BLUE	32%	(2562)
2096B	10	BLUE	40%	(2561)
2096C	6	BLUE	8%	(2560)
2096D	7	BLUE	28%	(2559)
2096E	8	BLUE	12%	(2558)
2096F	20	BLUE	80%	(2563)
2096G	14	BLUE	28%	(2569)
2096H	9	BLUE	60%	(2565)
2096I	8	BLUE	40%	(2564)
2096J	9	BLUE	64%	(2566)
2096K	8	BLUE	24%	(2567)
2096L	4	BLUE	12%	(2568)
2096	13	BLUE	72%	
2097	7	BLUE	24%	
2098	10	BLUE	32%	
2099	20	BLUE	32%	
2101	16	BLUE	40%	
2102	14	BLUE	32%	
2104	16	LIVE	60%	
2105	4	LIVE	32%	
2106	6	BLUE	32%	
2107	9	BLUE	36%	
2108	8	BLUE	28%	
2109	3	BLUE	4%	
2110	16	BLUE	48%	
2115	12	BLUE	48%	
2117A	30	BLUE	68%	(2522)
2117B	22	BLUE	60%	(2523)
2118	20	BLUE	60%	
2100	20	BLUE	60%	
2096M	16	BLUE	60%	
2104A	4	LIVE	40%	



SHEET
1
OF 1

INDIVIDUAL SITE PLANS
SANTA YSABEL RANCH
COAL 99-0229
LOT 86



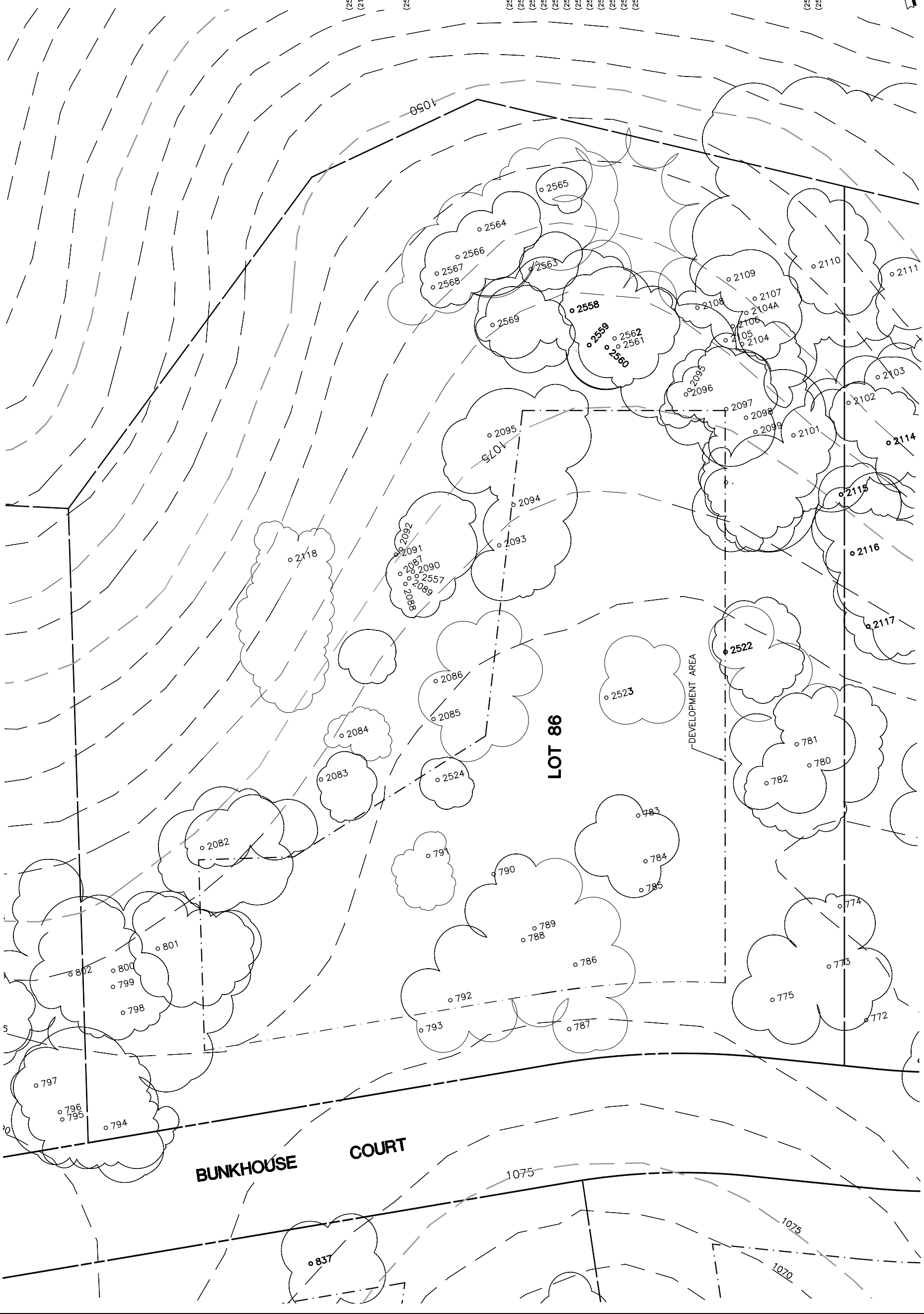
REV.	BY	DATE	DESCRIPTION

NOTE: ALL TREES OUTSIDE OF BUILDING ENVELOPE TO BE PROTECTED. TREES MAY BE REMOVED BY PERMIT IF NECESSARY FOR DRIVEWAY ACCESS BUT REMOVAL WILL BE MINIMIZED.

NOTE: TREE DATA BASED ON OAK TREE ASSESSMENT BY JACK BRAZEL ON 10.24.00.

NOTE: ALL TREE LOCATIONS WITHIN BUILDING ENVELOPE TO BE VERIFIED PRIOR TO PERMITTING

32234-000\ALHOUSE\LOTS\ PLOT: 7/26/02



BUNKHOUSE COURT

LOT 86

DEVELOPMENT AREA