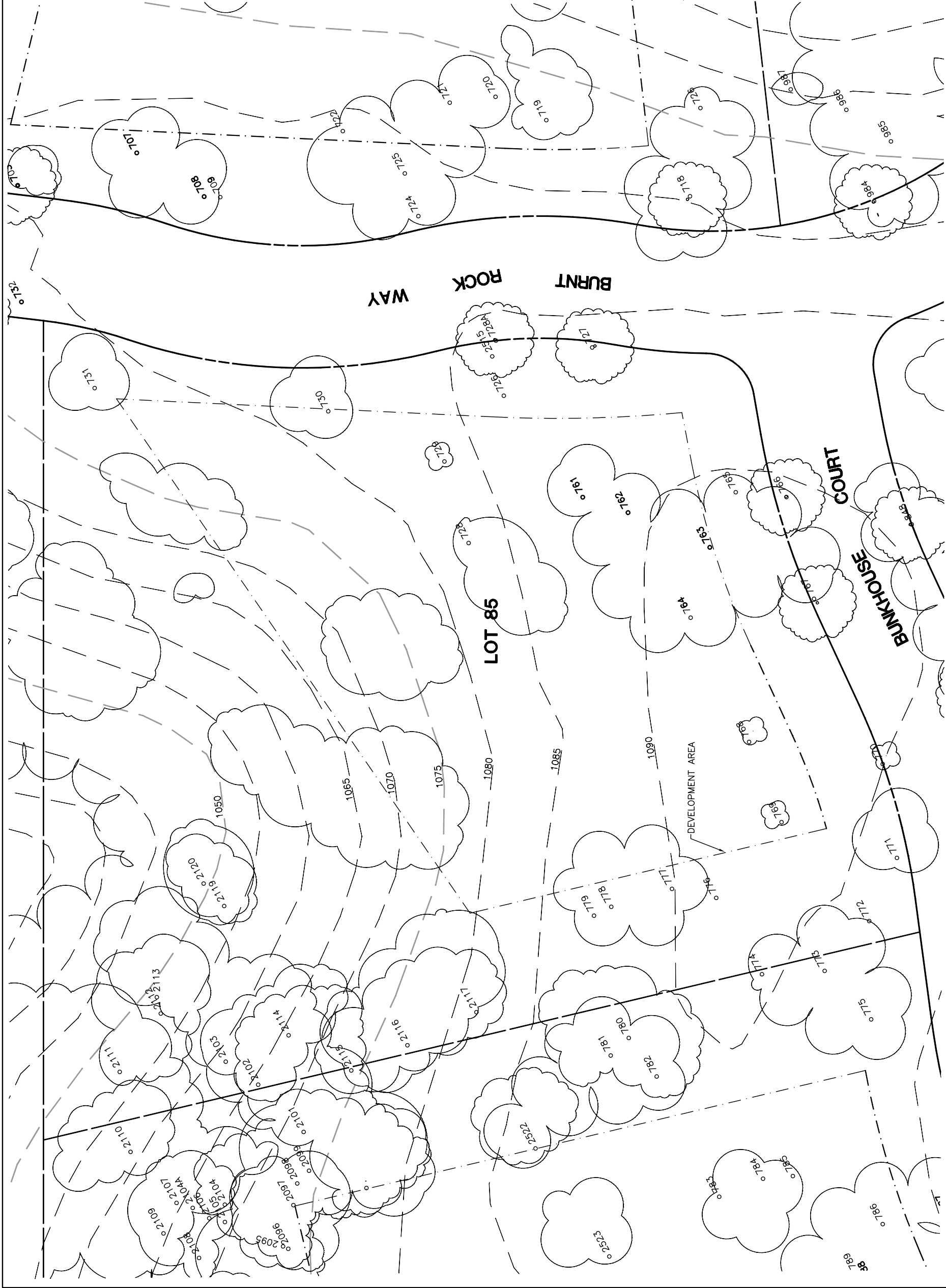


Lot 85				
Tree	Diameter	Type	Health	Must Save (visual mitigation)
727	7	BLUE	24%	
728A	17	BLUE	60%	
728	14	BLUE	60%	
729	8	BLUE	76%	
730	17	BLUE	76%	
731	14	BLUE	64%	
761	18	BLUE	40%	
762	26	BLUE	8%	X
763	17	BLUE	48%	
764	32	BLUE	60%	X
765	8	BLUE	24%	
767	18	BLUE	72%	
768	13	BLUE	68%	X
769	16	BLUE	72%	X
770	12	BLUE	24%	
771	18	BLUE	76%	
772	9	BLUE	64%	
776	6	BLUE	4%	
777	22	BLUE	68%	
778	13	BLUE	4%	
779	32	BLUE	24%	
2102	14	BLUE	32%	
2103	24	BLUE	60%	
2111	22	BLUE	68%	
2112	19	BLUE	60%	
2113	8	BLUE	4%	
2114	8	BLUE	28%	
2115	12	BLUE	48%	
2116	10	BLUE	28%	
2117	32	BLUE	52%	
2119	18	BLUE	64%	
2120	20	BLUE	64%	



NOTE: TREE DATA BASED ON OAK TREE ASSESSMENT BY JACK BRAZEL ON 10.24.00.

NOTE: ALL TREES OUTSIDE OF BUILDING ENVELOPE TO BE PROTECTED. TREES MAY BE REMOVED BY PERMIT IF NECESSARY FOR DRIVEWAY ACCESS BUT REMOVAL WILL BE MINIMIZED.

NOTE: ALL TREE LOCATIONS WITHIN BUILDING ENVELOPE TO BE VERIFIED PRIOR TO PERMITTING

REV.	BY	DATE	DESCRIPTION

INDIVIDUAL SITE PLANS
SANTA YSABEL RANCH
COAL 99-0229
LOT 85

eda
eda professionals
civil engineers • land surveyors • land planners
19145 E. Alameda
P.O. Box 548-988 • email: eda@edapro.com

P.L.T.D. 7/26/02

SHEET
1
OF 1