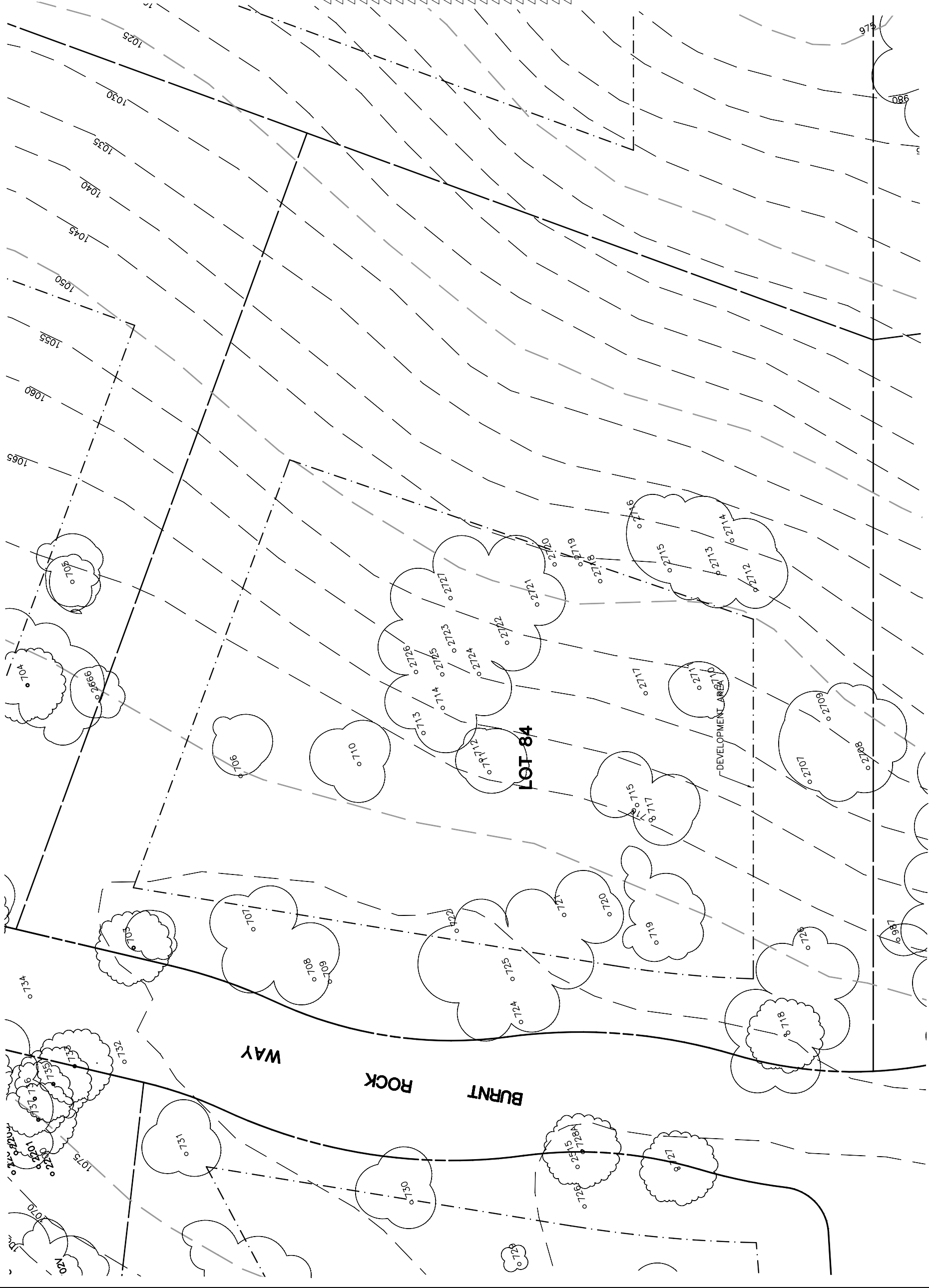


Lot 84				
Tree	Diameter (# of Trunks)	Type	Health	Must Save (visual mitigation)
703	19	BLUE	64%	X
706	14	BLUE	40%	X
707	16	BLUE	76%	X
708	6 (3)	HOLLY LEAF	16%	X
709	8	BLUE	64%	X
710	16 (3)	BLUE	68%	
711	9	BLUE	16%	
712	15 (2)	BLUE	60%	
713	4	BLUE	0%	
714	16 (2)	BLUE	48%	
715	8	BLUE	16%	
716	8	BLUE	64%	
717	8	BLUE	16%	X
718	28	BLUE	80%	X
719	28	BLUE	72%	X
720	4	BLUE	0%	X
721	22	BLUE	56%	X
722	11	BLUE	32%	X
724	7	BLUE	16%	X
725	14	BLUE	72%	X
726	16	BLUE	70%	X
2707	27	BLUE	55%	X
2708	8	BLUE	20%	X
2709	20	BLUE	55%	X
2710	9	BLUE	35%	X
2711	16 (2)	BLUE	40%	X
2712	10	BLUE	35%	X
2713	11	BLUE	20%	X
2714	22 (2)	BLUE	45%	X
2715	8	BLUE	30%	X
2716	34 (2)	BLUE	65%	X
2717	10	BLUE	40%	X
2718	11	BLUE	40%	X
2719	15 (2)	BLUE	40%	X
2720	12	BLUE	40%	X
2721	18	BLUE	40%	X
2722	11	BLUE	35%	X
2723	3	BLUE	20%	X
2724	10	BLUE	35%	X
2725	15	BLUE	60%	X
2726	8	BLUE	65%	X
2727	15	BLUE	55%	X

NOTE: ● = ORIGINAL DATA
 ○ = MODIFIED BY
 ALTHOUSE
 & MEADE, INC.



<p>NOTE: TREE DATA BASED ON OAK TREE ASSESSMENT BY JACK BRAZEL ON 10.24.00.</p>		<p>NOTE: ALL TREES OUTSIDE OF BUILDING ENVELOPE TO BE PROTECTED. TREES MAY BE REMOVED BY PERMIT IF NECESSARY FOR DRIVEWAY ACCESS BUT REMOVAL WILL BE MINIMIZED.</p>		<p>NOTE: ALL TREE LOCATIONS WITHIN BUILDING ENVELOPE TO BE VERIFIED PRIOR TO PERMITTING</p>	
REV.	BY	DATE	DESCRIPTION	REV.	BY
1		05.16.03	PER CONDITIONS		
			<p>PLT.D: 7/26/02</p>		
<p>32234-000\ALTHOUSE\LOTS</p>			<p>eda</p>		
<p>Individual Site Plans Santa Ysabel Ranch Coal 99-0229 Lot 84</p>			<p>eda civil engineers • land planners 19455 26th Street, Suite 200 San Diego, CA 92127 Tel: 619-594-8888 • Fax: 619-594-8889 • Email: info@eda.com</p>		
<p>SHEET</p>			<p>1 OF 1</p>		