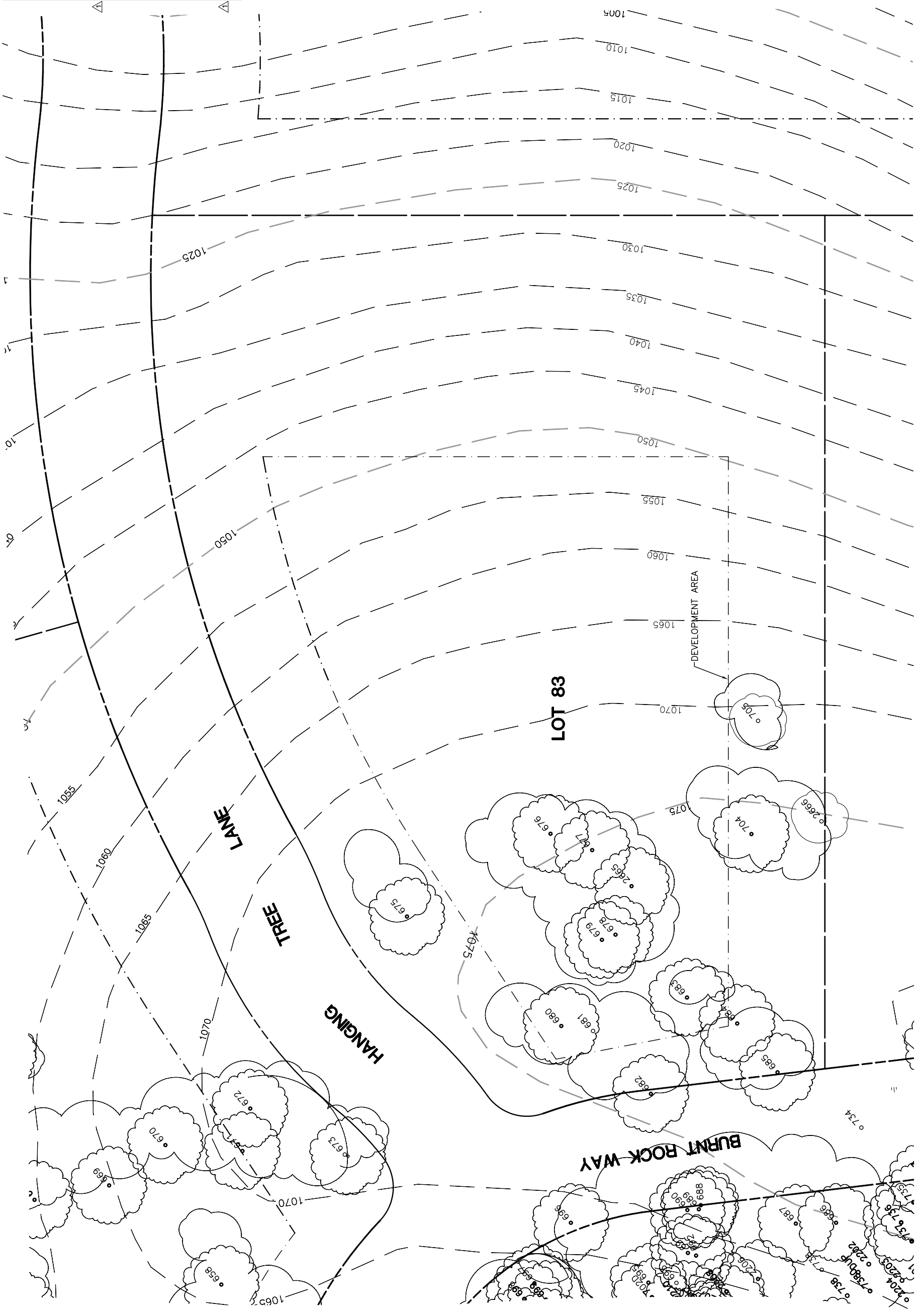
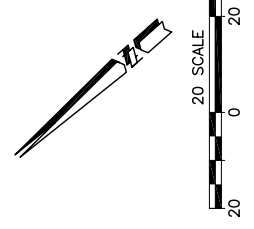


Lot 83				
Tree	Diameter (# of Trunks)	Type	Health	Must Save (visual mitigation)
675	10	BLUE	52%	
676	22 (2)	BLUE	76%	X
677	18 (2)	BLUE	24%	X
678	9 (2)	BLUE	35%	X
679	15	BLUE	56%	
680	14	BLUE	40%	
681	18	BLUE	28%	
682	22	BLUE	76%	
683	12	BLUE	56%	
684	6	BLUE	12%	
685	23 ●	BLUE	60%	
704	12 (2)	BLUE	72%	
705	11	BLUE	60%	
2665	9	BLUE	16%	
2666	12 (3)	BLUE	70%	

NOTE: ● = ORIGINAL DATA
 MODIFIED BY
 ALTHOUSE
 & MEADE, INC.



NOTE: TREE DATA BASED ON OAK TREE ASSESSMENT BY JACK BRAZEL ON 10.24.00.

NOTE: ALL TREES OUTSIDE OF BUILDING ENVELOPE TO BE PROTECTED. TREES MAY BE REMOVED BY PERMIT IF NECESSARY FOR DRIVEWAY ACCESS BUT REMOVAL WILL BE MINIMIZED.

NOTE: ALL TREE LOCATIONS WITHIN BUILDING ENVELOPE TO BE VERIFIED PRIOR TO PERMITTING

REV.	BY	DATE	DESCRIPTION
1		05.16.03	PER CONDITIONS



INDIVIDUAL SITE PLANS
 SANTA YSABEL RANCH
 COAL 99-0229
 LOT 83