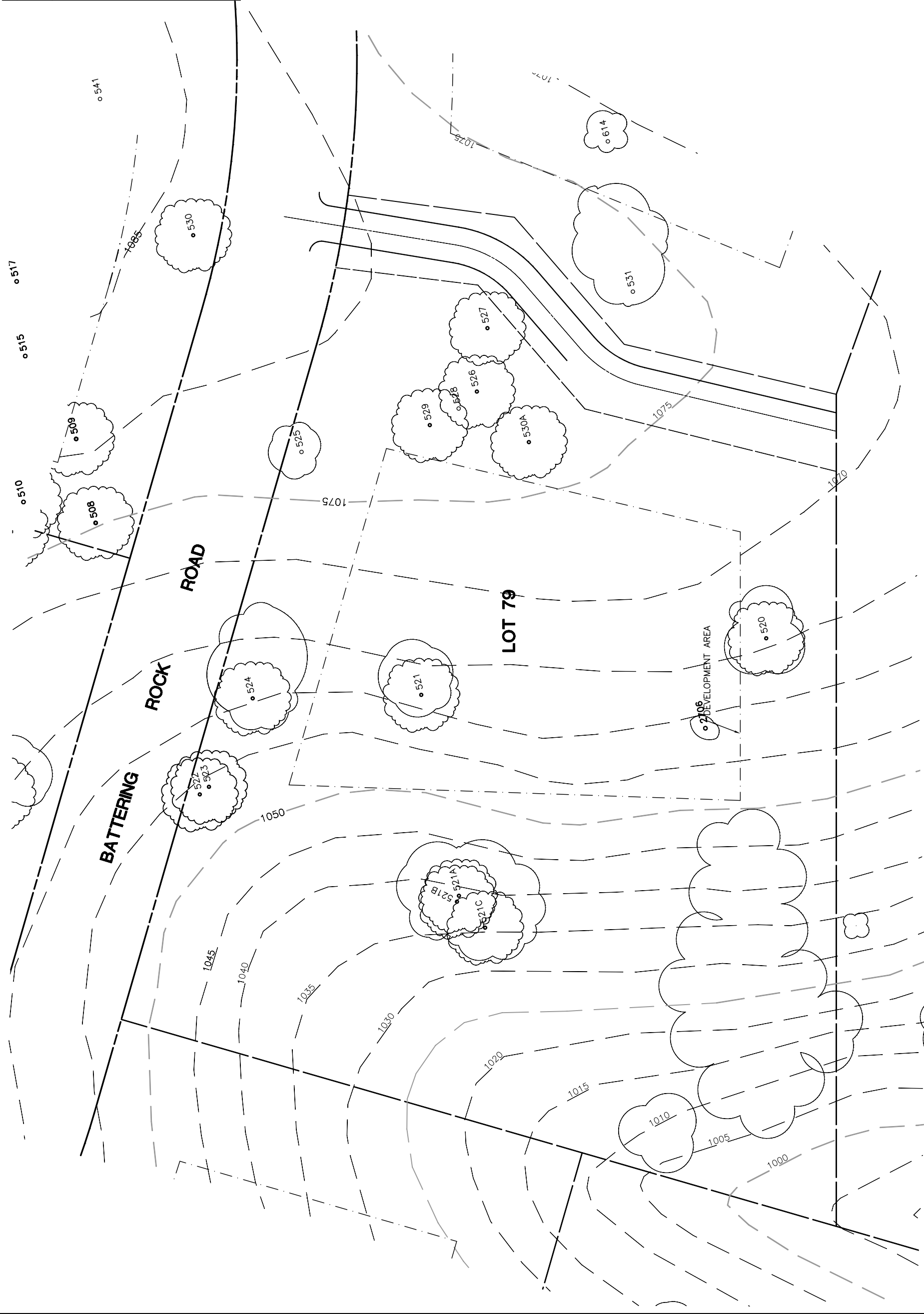


Lot 79				
Tree	Diameter (# of Trunks)	Type	Health	Must Save (visual mitigation)
520	24 (2)	BLUE	80%	
521A	16	BLUE	60%	
521B	17	BLUE	60%	
521C	14 (4)	BLUE	60%	
521	11	BLUE	68%	
522	12	BLUE	28%	
523	22 (2)	BLUE	60%	
524	18	BLUE	76%	
525	30 ●	BLUE	68%	
526	10 (2)	BLUE	28%	X
527	9 (4) ●	BLUE	68%	
528	16	BLUE	72%	X
529	12 (2)	BLUE	24%	X
530A	22	BLUE	80%	X
2706	13	BLUE	70%	

NOTE: ● = ORIGINAL DATA
 MODIFIED BY
 ALTHOUSE
 & MEADE, INC.



NOTE: TREE DATA BASED ON OAK TREE ASSESSMENT BY JACK BRAZEL ON 10.24.00.

NOTE: ALL TREES OUTSIDE OF BUILDING ENVELOPE TO BE PROTECTED. TREES MAY BE REMOVED BY PERMIT IF NECESSARY FOR DRIVEWAY ACCESS BUT REMOVAL WILL BE MINIMIZED.

NOTE: ALL TREE LOCATIONS WITHIN BUILDING ENVELOPE TO BE VERIFIED PRIOR TO PERMITTING

REV.	BY	DATE	DESCRIPTION



INDIVIDUAL SITE PLANS
 SANTA YSABEL RANCH
 COAL 99-0229
 LOT 79

SHEET
 1
 OF 1

