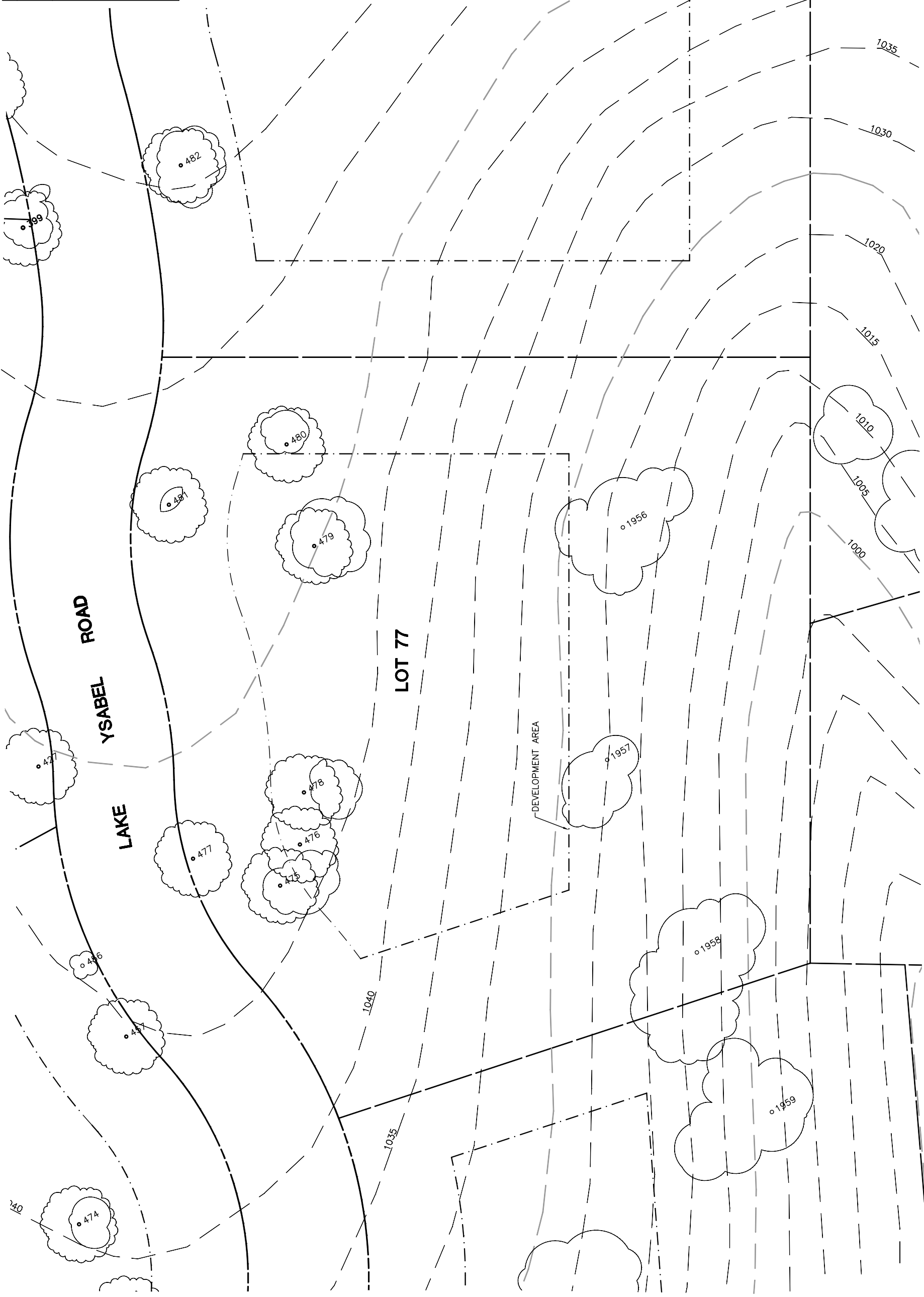


Lot 77				
Tree	Diameter (# of Trunks)	Type	Health	Must Save (visual mitigation)
475	22 (3)	BLUE	64%	
476	18	BLUE	52%	
477	21	BLUE	64%	
478	14	BLUE	60%	
479	39	BLUE	80%	
480	17	BLUE	44%	
481	27	BLUE	64%	
1958	24	BLUE	75%	
1956	27	BLUE	60%	
1957	30 (3)	BLUE	75%	

NOTE: ● = ORIGINAL DATA
 MODIFIED BY
 ALTHOUSE
 & MEADE, INC.



NOTE: TREE DATA BASED ON OAK TREE ASSESSMENT BY JACK BRAZEL ON 10.24.00.

NOTE: ALL TREES OUTSIDE OF BUILDING ENVELOPE TO BE PROTECTED. TREES MAY BE REMOVED BY PERMIT IF NECESSARY FOR DRIVEWAY ACCESS BUT REMOVAL WILL BE MINIMIZED.

NOTE: ALL TREE LOCATIONS WITHIN BUILDING ENVELOPE TO BE VERIFIED PRIOR TO PERMITTING

REV.	BY	DATE	DESCRIPTION



INDIVIDUAL SITE PLANS
 SANTA YSABEL RANCH
 COAL 99-0229
 LOT 77