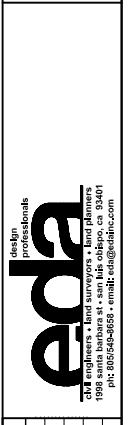
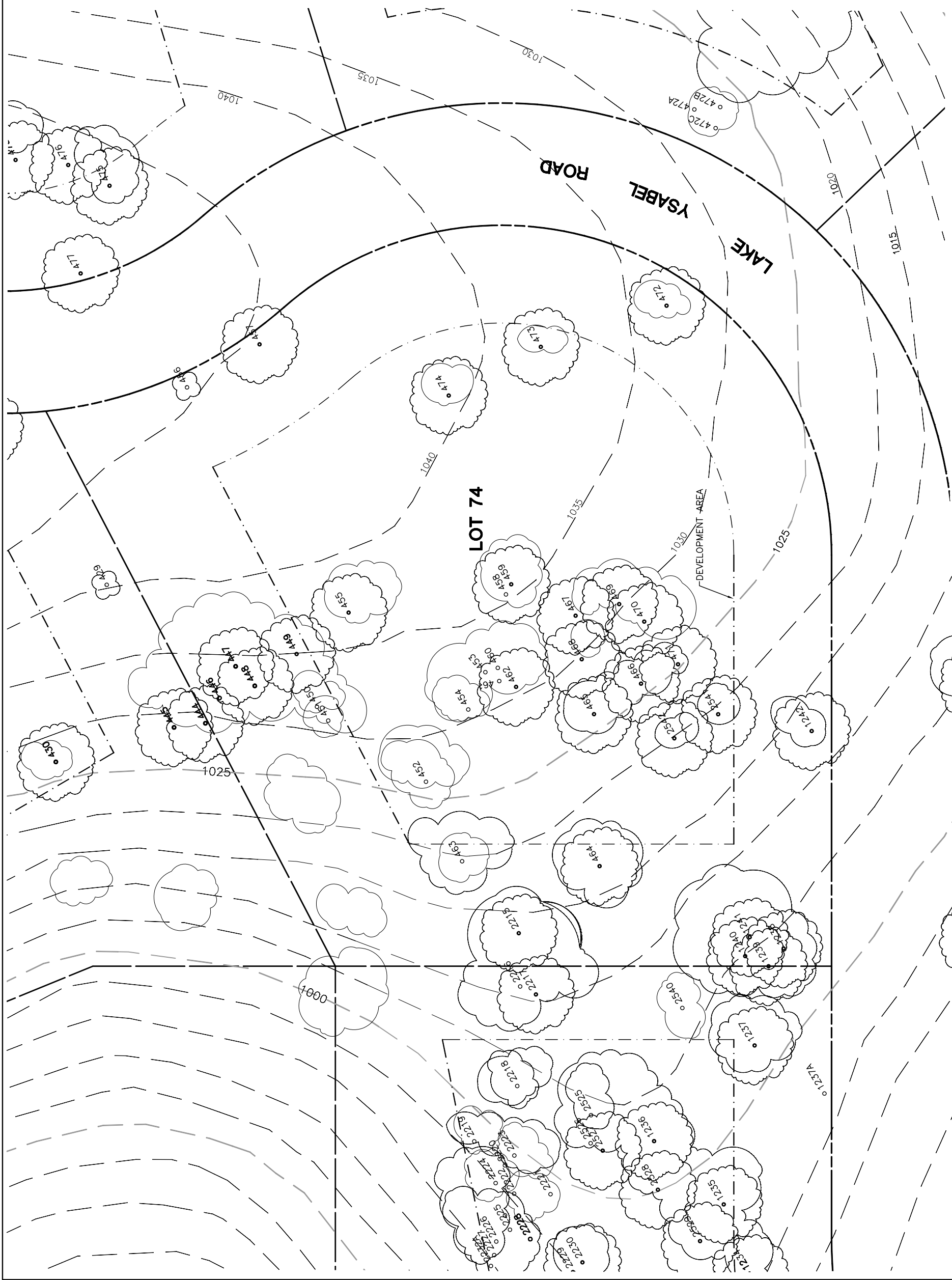


Lot 74				
Tree	Diameter (# of Trunks)	Type	Health	Must Save (visual mitigation)
446	9	BLUE	40%	
447	16	BLUE	64%	
448	6	BLUE	12%	
449	12 (3)	BLUE	40%	
450	9	BLUE	52%	
451	7	BLUE	32%	
452	11	BLUE	44%	
453	8	BLUE	32%	
454	7	BLUE	32%	
455	9	BLUE	32%	
456	14	BLUE	68%	
457	12	BLUE	60%	
458	16	BLUE	44%	X
459	18	BLUE	64%	X
460	6	BLUE	24%	
461	5	BLUE	8%	
462	9	BLUE	44%	
463	18	BLUE	24%	
464	14	BLUE	52%	
465	16 (2)	BLUE	40%	
466	6 (2)	BLUE	28%	
467	8	BLUE	16%	
468	10	BLUE	44%	
469	9	BLUE	44%	
470	9	BLUE	44%	
471	6 (3)	BLUE	28%	
472	15 (3)	BLUE	36%	
473	10 (2)	BLUE	20%	
474	12 (2)	BLUE	60%	
1238	10 (2)	BLUE	28%	
1239	12	BLUE	40%	
1240	11	BLUE	48%	
1241	19 (2)	BLUE	60%	
1242	22 (2)	BLUE	80%	
2215	4	BLUE	20%	
2542	7	BLUE	60%	
2541	9	BLUE	70%	

NOTE: ● = ORIGINAL DATA
 ○ = MODIFIED BY
 ALTHOUSE
 & MEADE, INC.



REV.	BY	DATE	DESCRIPTION

NOTE: ALL TREE LOCATIONS WITHIN BUILDING ENVELOPE TO BE VERIFIED PRIOR TO PERMITTING

NOTE: ALL TREES OUTSIDE OF BUILDING ENVELOPE TO BE PROTECTED. TREES MAY BE REMOVED BY PERMIT IF NECESSARY FOR DRIVEWAY ACCESS BUT REMOVAL WILL BE MINIMIZED.

NOTE: TREE DATA BASED ON OAK TREE ASSESSMENT BY JACK BRAZEL ON 10.24.00.