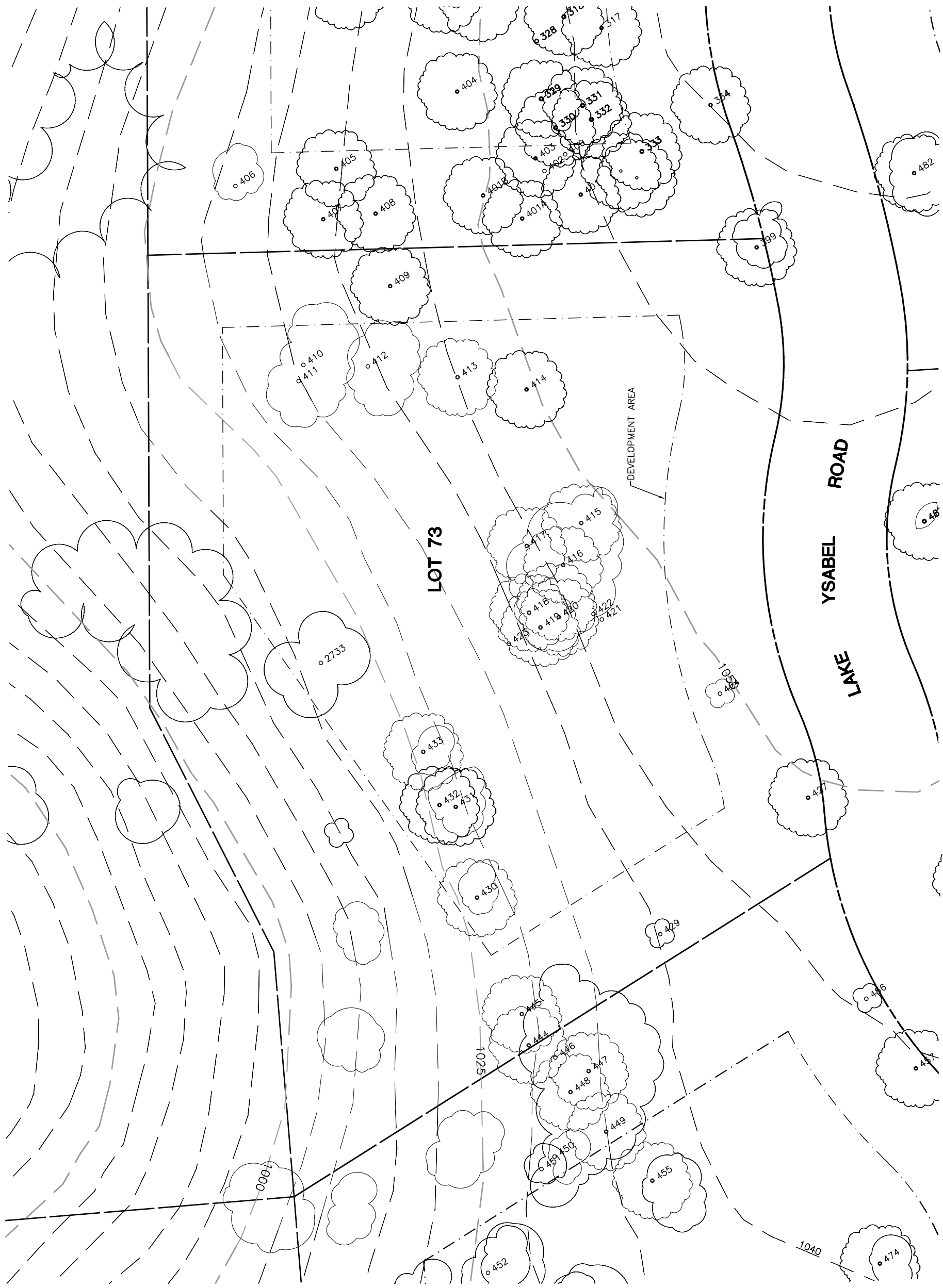
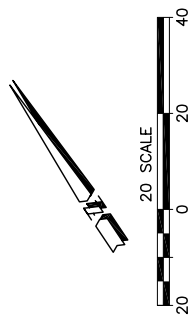


Lot 73				
Tree	Diameter (# of Trunks)	Type	Health	Must Save (visual mitigation)
399	22	BLUE	80%	
409	34 ●	BLUE	40%	
410	10	BLUE	32%	
411	14	BLUE	48%	
412	27 ●	BLUE	48%	
413	12	BLUE	24%	
414	DEAD			DOWN
415	32 ●	BLUE	68%	X
416	14	BLUE	16%	
417	16	BLUE	28%	
418	7	BLUE	24%	
419	7	BLUE	24%	
420	16	BLUE	32%	
421	22	BLUE	68%	X
422	16	BLUE	52%	X
423	12 (3)	BLUE	44%	
424	17	BLUE	64%	
430	16	BLUE	68%	
431	8	BLUE	32%	
432	9	BLUE	32%	
433	8 (2)	BLUE	80%	
444	6	BLUE	24%	
445	8	BLUE	40%	
427	20	BLUE	40%	
429	29 ●	BLUE	70%	
2733	20	BLUE	60%	

NOTE: ● = ORIGINAL DATA  
 ○ = MODIFIED BY  
 ALTHOUSE  
 & MEADE, INC.



SHEET  
**1**  
 OF 1

**INDIVIDUAL SITE PLANS**  
**SANTA YSABEL RANCH**  
**COAL 99-0229**  
**LOT 73**

**eda**  
 eda professionals  
 civil engineers • land planners  
 1914 28th Street, Suite 100  
 San Diego, CA 92106  
 phone: 619.594.9693 • email: info@edapro.com

REV.	BY	DATE	DESCRIPTION

NOTE: TREE DATA BASED ON OAK TREE ASSESSMENT BY JACK BRAZEL ON 10.24.00.

NOTE: ALL TREES OUTSIDE OF BUILDING ENVELOPE TO BE PROTECTED. TREES MAY BE REMOVED BY PERMIT IF NECESSARY FOR DRIVEWAY ACCESS BUT REMOVAL WILL BE MINIMIZED.

NOTE: ALL TREE LOCATIONS WITHIN BUILDING ENVELOPE TO BE VERIFIED PRIOR TO PERMITTING

32234-000(ALTHOUSE/LOTS) PLOT: 7/26/02