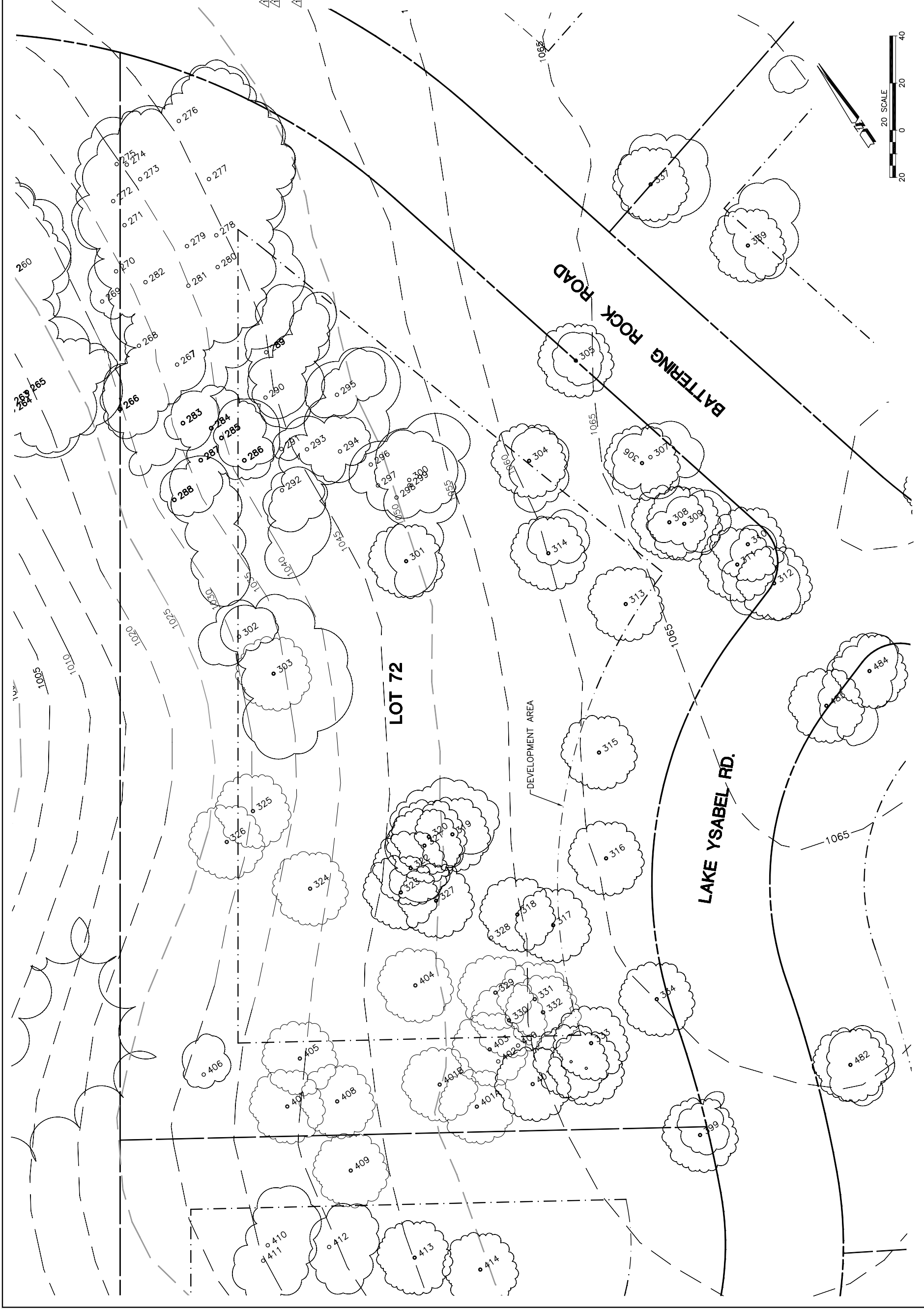


Lot 72				Must Save (visual mitigation)
Tree	Diameter	Type	Health	
266	25	BLUE	24%	
267	11	BLUE	28%	
268	9	BLUE	44%	
270	9	BLUE	40%	
271	7	BLUE	24%	
272	11	BLUE	32%	
273	10	BLUE	26%	
274	9	BLUE	20%	
275	16	BLUE	32%	
276	14	BLUE	48%	
277	18	BLUE	60%	
278	13	BLUE	52%	
279	6	BLUE	24%	
280	12	BLUE	48%	
281	24	BLUE	56%	
282	8	BLUE	32%	
283	8	BLUE	40%	
284	10	BLUE	24%	
285	5	BLUE	20%	
286	8	BLUE	32%	X
287	6	BLUE	24%	
288	9	BLUE	44%	
289	20	BLUE	56%	X
290	9	BLUE	36%	X
291	8	BLUE	28%	X
292	16	BLUE	40%	X
293	12	BLUE	44%	X
294	6	BLUE	24%	X
295	15	BLUE	68%	X
296	6	BLUE	28%	X
297	11	BLUE	52%	X
298	12	BLUE	32%	X
299	8	BLUE	44%	X
300	13	BLUE	40%	X
301	9	BLUE	48%	
302	14	BLUE	64%	X
303	20	BLUE	64%	X
304	16	BLUE	64%	X
305	20	BLUE	64%	X
306	12	BLUE	48%	
307	18	BLUE	68%	
308	7	BLUE	32%	
309	11	BLUE	52%	
310	14	BLUE	60%	
311	15	BLUE	56%	
312	16	BLUE	64%	
313	14	BLUE	60%	X
314	14	BLUE	60%	X
315	20	BLUE	72%	X
316	18	BLUE	60%	X
317	9	BLUE	44%	X
318	16	BLUE	56%	X
319	12	BLUE	44%	
320	6	BLUE	16%	
321	16	BLUE	64%	
322	13	BLUE	48%	
323	9	BLUE	16%	X
324	8	BLUE	52%	X
325	8	BLUE	48%	X
326	6	BLUE	28%	
327	19	BLUE	40%	
328	15	BLUE	52%	
329	9	BLUE	16%	X
330	7	BLUE	8%	X
331	11	BLUE	28%	X
332	16	BLUE	44%	X
333	12	BLUE	44%	
334	14	BLUE	44%	
400	15	BLUE	60%	
401A	16	BLUE	60%	
401B	14	BLUE	60%	
401	21	BLUE	64%	
402	7	BLUE	8%	
403	11	BLUE	36%	
404	18	BLUE	56%	



NOTE: TREE DATA BASED ON OAK TREE ASSESSMENT BY JACK BRAZEL ON 10.24.00.

NOTE: ALL TREES OUTSIDE OF BUILDING ENVELOPE TO BE PROTECTED. TREES MAY BE REMOVED BY PERMIT IF NECESSARY FOR DRIVEWAY ACCESS BUT REMOVAL WILL BE MINIMIZED.


NOTE: ALL TREE LOCATIONS WITHIN BUILDING ENVELOPE TO BE VERIFIED PRIOR TO PERMITTING

REV. 1

REV.	BY	DATE	DESCRIPTION
1		05.16.03	PER CONDITIONS

32234-000A (ALPHABETIC)

PLT'D: 7/26/02



INDIVIDUAL SITE PLANS
SANTA YSABEL RANCH
COAL 99-0229
LOT 72

SHEET
1
 OF 1