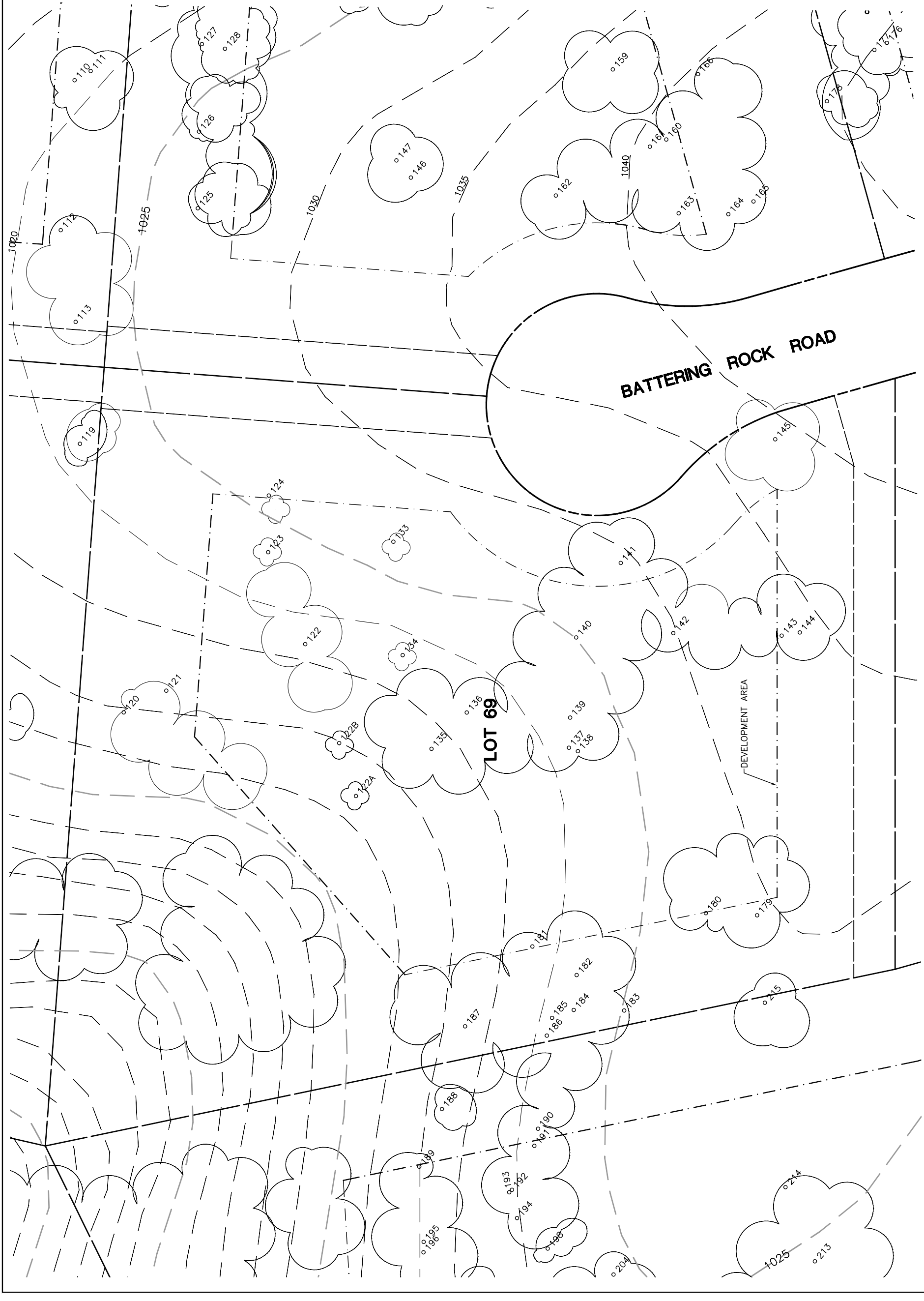


Lot 69				
Tree	Diameter	Type	Health	Must Save (visual mitigation)
120	13	BLUE	56%	
121	11	BLUE	44%	
122	15	BLUE	44%	
124	17	BLUE	56%	X
133	14	BLUE	52%	X
134	25	BLUE	52%	
135	18	BLUE	36%	
136	20	BLUE	64%	
137	8	BLUE	40%	
138	7	BLUE	40%	
139	28	BLUE	60%	
140	26	BLUE	56%	X
141	23	BLUE	72%	X
142	15	BLUE	56%	X
143	23	BLUE	24%	
144	20	BLUE	52%	
145	24	BLUE	76%	
179	24	BLUE	56%	
180	18	BLUE	56%	
181	11	BLUE	32%	
182	19	BLUE	60%	
183	12	BLUE	52%	
184	13	BLUE	48%	
185	12	BLUE	52%	
186	26	BLUE	44%	
187	27	BLUE	68%	
123	12	BLUE	30%	
122A	8	BLUE	30%	
122B	7	BLUE	20%	




Lot 69

20 SCALE
0 20 40

SHEET
1
OF 1

INDIVIDUAL SITE PLANS
SANTA YSABEL RANCH
COAL 99-0229
LOT 69



eda professionals
civil engineers • land surveyors • land planners
1914 26th Street, Suite 200, San Diego, CA 92108
tel: 619-594-9888 • email: info@edapro.com

REV.	BY	DATE	DESCRIPTION

NOTE: DATA BASED ON OAK TREE TREE ASSESSMENT BY JACK BRAZEL ON 10.24.00.

NOTE: ALL TREES OUTSIDE OF BUILDING ENVELOPE TO BE PROTECTED. TREES MAY BE REMOVED BY PERMIT IF NECESSARY FOR DRIVEWAY ACCESS BUT REMOVAL WILL BE MINIMIZED.

NOTE: ALL TREE LOCATIONS WITHIN BUILDING ENVELOPE TO BE VERIFIED PRIOR TO PERMITTING

P.L.T.D.: 7/26/02
32234-000\ALPHASE\LOTS\