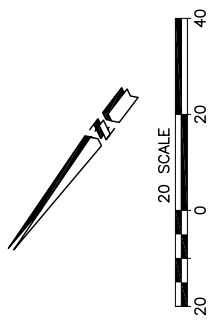
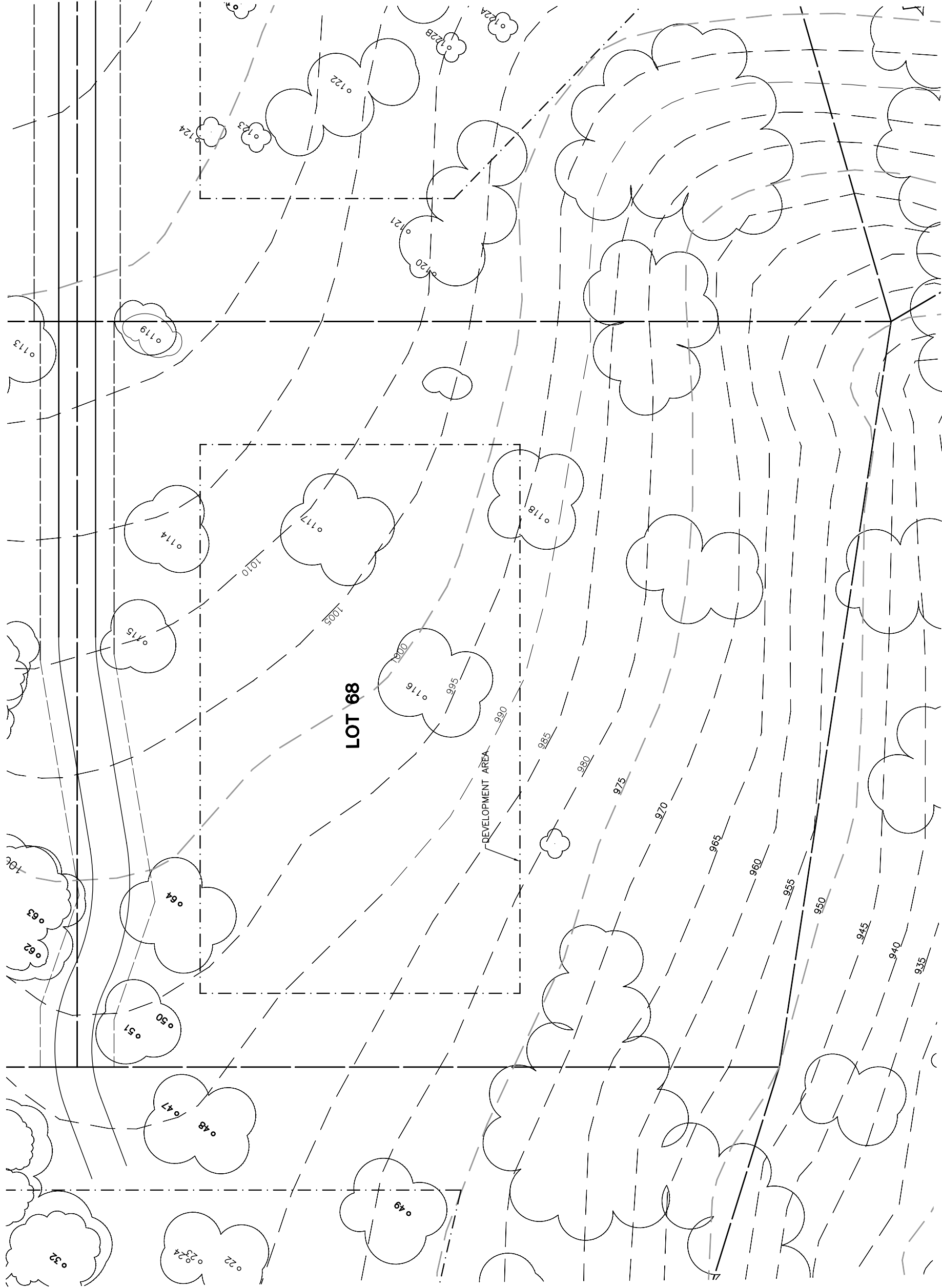


Lot 68				
Tree	Diameter	Type	Health	Must Save (visual mitigation)
50	11	BLUE	32%	
51	16	BLUE	68%	
64	18	BLUE	72%	
114	35	VALLEY	24%	
115	13	BLUE	64%	
116	31	BLUE	44%	X
117	25	BLUE	68%	X
118	29	BLUE	64%	
119	8	BLUE	36%	



REV.	BY	DATE	DESCRIPTION

NOTE: ALL TREES OUTSIDE OF BUILDING ENVELOPE TO BE PROTECTED. TREES MAY BE REMOVED BY PERMIT IF NECESSARY FOR DRIVEWAY ACCESS BUT REMOVAL WILL BE MINIMIZED.

NOTE: TREE DATA BASED ON OAK TREE ASSESSMENT BY JACK BRAZEL ON 10.24.00.

NOTE: ALL TREES WITHIN BUILDING ENVELOPE TO BE PROTECTED. TREES MAY BE REMOVED BY PERMIT IF NECESSARY FOR DRIVEWAY ACCESS BUT REMOVAL WILL BE MINIMIZED.