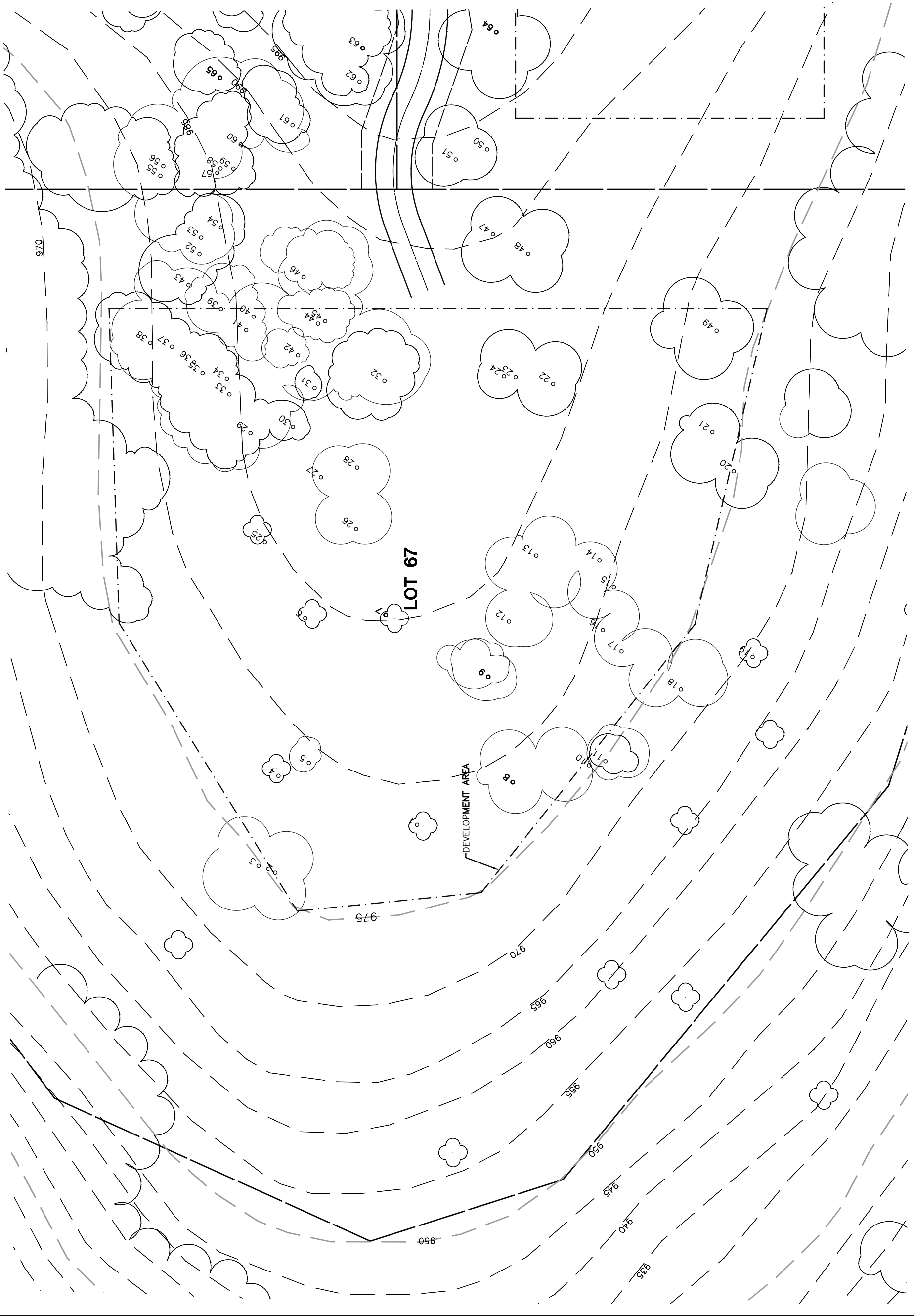
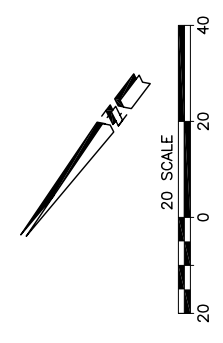


Lot 67				
Tree	Diameter	Type	Health	Must Save (visual mitigation)
1	16	BLUE	48%	
2	20	BLUE	68%	X
3	8	BLUE	48%	X
4	9	BLUE	56%	X
5	10	BLUE	0%	X
6	10	BLUE	48%	X
7	13	BLUE	48%	X
8	17	BLUE	60%	X
9	11	BLUE	48%	X
10	13	BLUE	44%	X
11	10	BLUE	32%	X
12	13	BLUE	40%	X
13	14	BLUE	64%	X
14	13	BLUE	48%	X
15	10	BLUE	44%	X
16	10	BLUE	44%	X
17	14	BLUE	52%	X
18	10	BLUE	44%	X
19	16	BLUE	48%	X
20	13	BLUE	48%	X
21	11	BLUE	60%	X
22	12	● BLUE	48%	
23	10	BLUE	48%	
24	8	BLUE	48%	
25	9	BLUE	64%	
26	12	BLUE	56%	
27	7	BLUE	40%	
28	10	BLUE	44%	
29	19	BLUE	68%	
30	12	BLUE	48%	
31	7	BLUE	40%	
32	16	BLUE	64%	
33	6	BLUE	36%	
34	13	BLUE	40%	
35	9	BLUE	40%	
36	7	BLUE	32%	
37	11	BLUE	44%	
38	15	BLUE	52%	
39	10	BLUE	44%	
40	11	BLUE	44%	
41	6	BLUE	32%	
42	13	BLUE	52%	
43	8	BLUE	44%	
44	8	BLUE	40%	
45	9	BLUE	32%	
46	26	BLUE	36%	
47	10	BLUE	44%	
48	16	BLUE	64%	
49	23	BLUE	68%	
52	5	BLUE	24%	
53	8	BLUE	36%	
54	9	BLUE	28%	

NOTE: ● = ORIGINAL DATA
 MODIFIED BY
 ALTHOUSE
 & MEADE, INC.



NOTE: TREE DATA BASED ON OAK TREE ASSESSMENT BY JACK BRAZEL ON 10.24.00.	NOTE: ALL TREES OUTSIDE OF BUILDING ENVELOPE TO BE PROTECTED. TREES MAY BE REMOVED BY PERMIT IF NECESSARY FOR DRIVEWAY ACCESS BUT REMOVAL WILL BE MINIMIZED.	NOTE: ALL TREE LOCATIONS WITHIN BUILDING ENVELOPE TO BE VERIFIED PRIOR TO PERMITTING	REV.	BY	DATE	DESCRIPTION

32234-000(ALTHOUSE/LOTS) PLOT: 7/26/02

INDIVIDUAL SITE PLANS
SANTA YSABEL RANCH
COAL 99-0229
LOT 67

SHEET
1
 OF 1