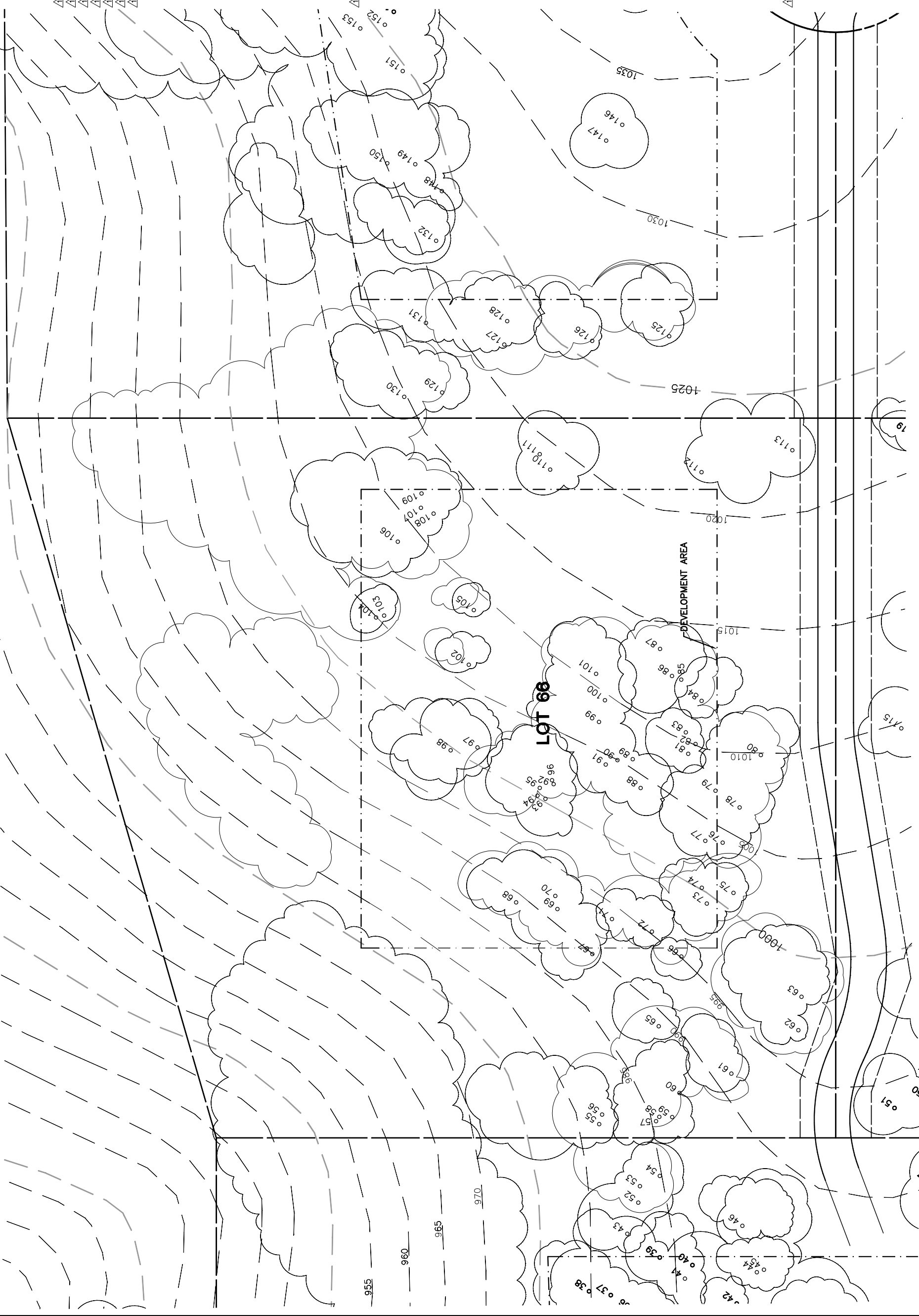
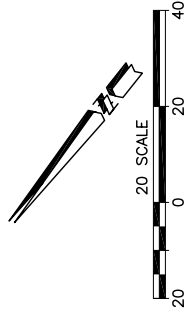


Lot 66				
Tree	Diameter	Type	Health	Must Save (visual mitigation)
55	6	BLUE	24%	
56	10	BLUE	48%	
57	8	BLUE	36%	
58	9	BLUE	32%	
59	10	BLUE	40%	
60	4	BLUE	24%	
61	18	BLUE	44%	
62	11	BLUE	40%	
63	18	BLUE	52%	
65	19	BLUE	52%	
66	9	BLUE	24%	X
67	6	BLUE	60%	X
68	8	BLUE	48%	X
69	10	BLUE	52%	X
70	9	BLUE	40%	X
71	16	BLUE	48%	X
72	6	BLUE	36%	X
73	9	BLUE	32%	X
74	16	BLUE	44%	X
75	10	BLUE	44%	X
76	7	BLUE	40%	X
77	10	BLUE	52%	X
78	20	BLUE	68%	X
79	8	BLUE	44%	X
80	14	BLUE	60%	X
81	6	BLUE	40%	X
82	9	BLUE	44%	X
83	12	BLUE	48%	X
84	14	BLUE	56%	X
85	6	BLUE	32%	X
86	8	BLUE	40%	X
87	10	BLUE	40%	X
88	11	BLUE	60%	X
89	13	BLUE	36%	X
90	6	BLUE	28%	X
91	14	BLUE	56%	X
92	8	BLUE	28%	X
93	6	BLUE	24%	X
94	9	BLUE	40%	X
95	7	BLUE	32%	X
96	10	BLUE	52%	X
97	13	BLUE	52%	X
98	14	BLUE	60%	X
99	14	BLUE	52%	X
100	6	BLUE	24%	X
101	12	BLUE	44%	X
102	8	BLUE	40%	X
103	8	BLUE	48%	X
104	8	BLUE	48%	X
105	7	BLUE	48%	X
106	18	BLUE	52%	X
107	9	BLUE	32%	X
108	10	BLUE	40%	X
109	9	BLUE	40%	X
110	17	BLUE	36%	X
111	16	BLUE	52%	X
112	18	BLUE	28%	X
113	10	BLUE	40%	X



NOTE: TREE DATA BASED ON OAK TREE ASSESSMENT BY JACK BRAZEL ON 10.24.00.

NOTE: ALL TREES OUTSIDE OF BUILDING ENVELOPE TO BE PROTECTED. TREES MAY BE REMOVED BY PERMIT IF NECESSARY FOR DRIVEWAY ACCESS BUT REMOVAL WILL BE MINIMIZED.

NOTE: ALL TREE LOCATIONS WITHIN BUILDING ENVELOPE TO BE VERIFIED PRIOR TO PERMITTING

REV.	BY	DATE	DESCRIPTION
1		05.16.03	PER CONDITIONS

INDIVIDUAL SITE PLANS
SANTA YSABEL RANCH
COAL 99-0229
LOT 66

SHEET
1
OF 1

eda
civil engineers • land planners
1914 805-548-9888 • email: info@eda.com