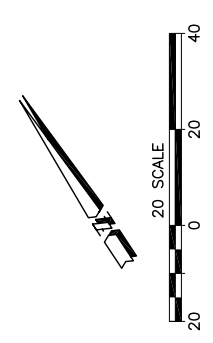
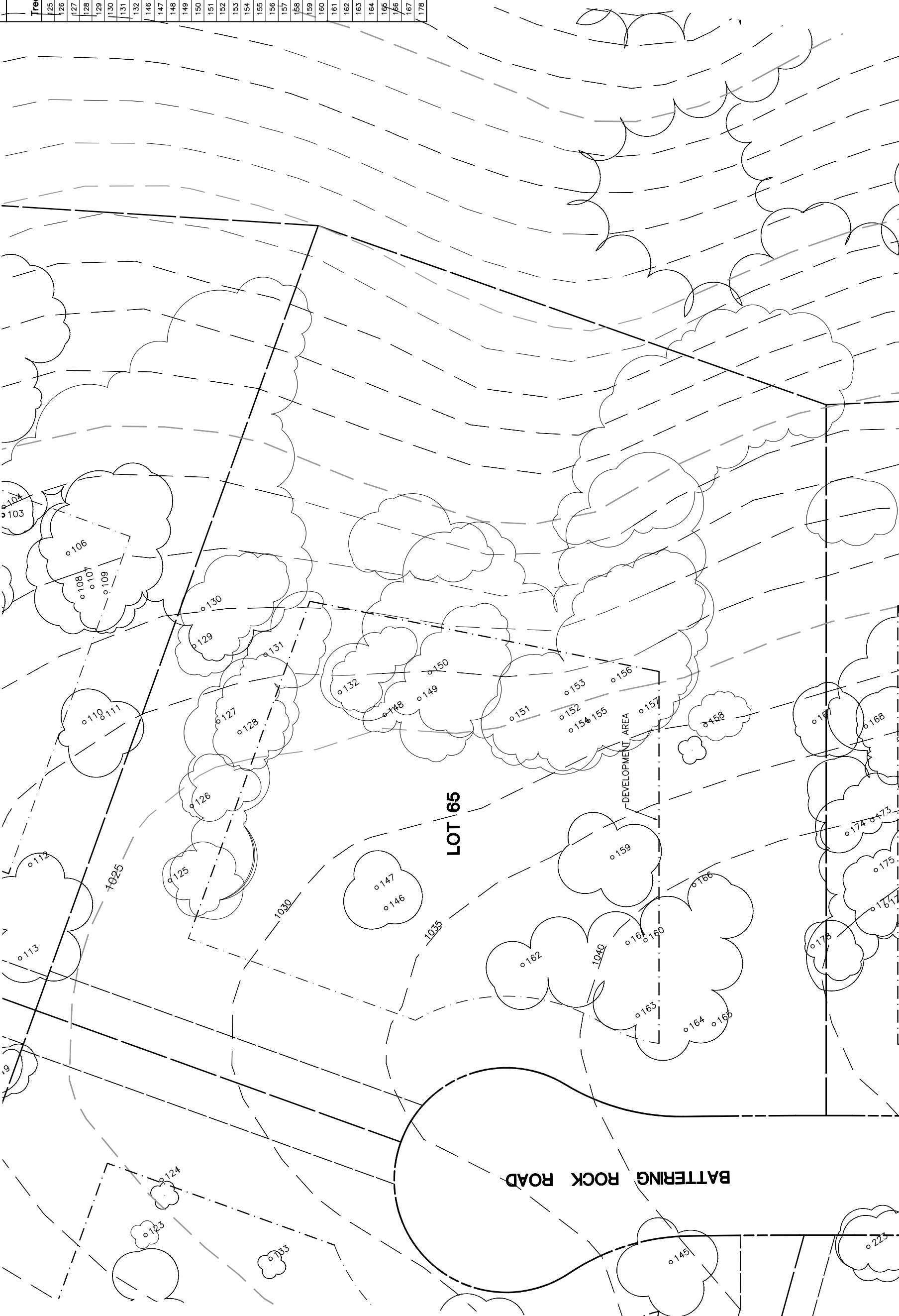
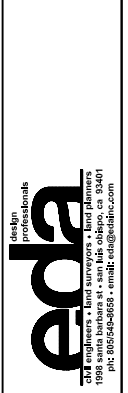


Lot 65

| Tree | Diameter (# of Trunks) | Type | Health | Must Save (visual mitigation) |
|------|------------------------|------|--------|-------------------------------|
| 125 | 18 | BLUE | 24% | |
| 126 | 17 | BLUE | 65% | |
| 127 | 9 | BLUE | 36% | |
| 128 | 9 | BLUE | 36% | |
| 129 | 13 | BLUE | 52% | |
| 130 | 8 | BLUE | 56% | |
| 131 | 12 | BLUE | 64% | |
| 132 | 14 | BLUE | 36% | |
| 146 | 8 | BLUE | 36% | |
| 147 | 13 | BLUE | 40% | |
| 148 | 21 | BLUE | 20% | |
| 149 | 13 | BLUE | 36% | |
| 150 | 18 | BLUE | 52% | |
| 151 | 24 | BLUE | 64% | |
| 152 | 5 | BLUE | 36% | |
| 153 | 8 | BLUE | 56% | |
| 154 | 9 | BLUE | 44% | |
| 155 | 11 | BLUE | 64% | |
| 156 | 12 | BLUE | 52% | |
| 157 | 6 | BLUE | 32% | |
| 158 | 25 | BLUE | 32% | |
| 159 | 35 | BLUE | 20% | |
| 160 | 12 | BLUE | 48% | |
| 161 | 13 | BLUE | 48% | |
| 162 | 19 | BLUE | 64% | |
| 163 | 10 | BLUE | 12% | |
| 164 | 12 | BLUE | 24% | |
| 165 | 15 | BLUE | 56% | |
| 166 | 18 | BLUE | 68% | |
| 167 | 10 (3) | BLUE | 44% | |
| 178 | 14 | BLUE | 64% | |



INDIVIDUAL SITE PLANS
SANTA YSABEL RANCH
COAL 99-0229
LOT 65



| REV. | BY | DATE | DESCRIPTION |
|------|----|------|-------------|
| | | | |
| | | | |
| | | | |

NOTE: ALL TREE LOCATIONS WITHIN BUILDING ENVELOPE TO BE VERIFIED PRIOR TO PERMITTING

NOTE: ALL TREES OUTSIDE OF BUILDING ENVELOPE TO BE PROTECTED. TREES MAY BE REMOVED BY PERMIT IF NECESSARY FOR DRIVEWAY ACCESS BUT REMOVAL WILL BE MINIMIZED.

TREE DATA BASED ON OAK TREE ASSESSMENT BY JACK BRAZEL ON 10.24.00.