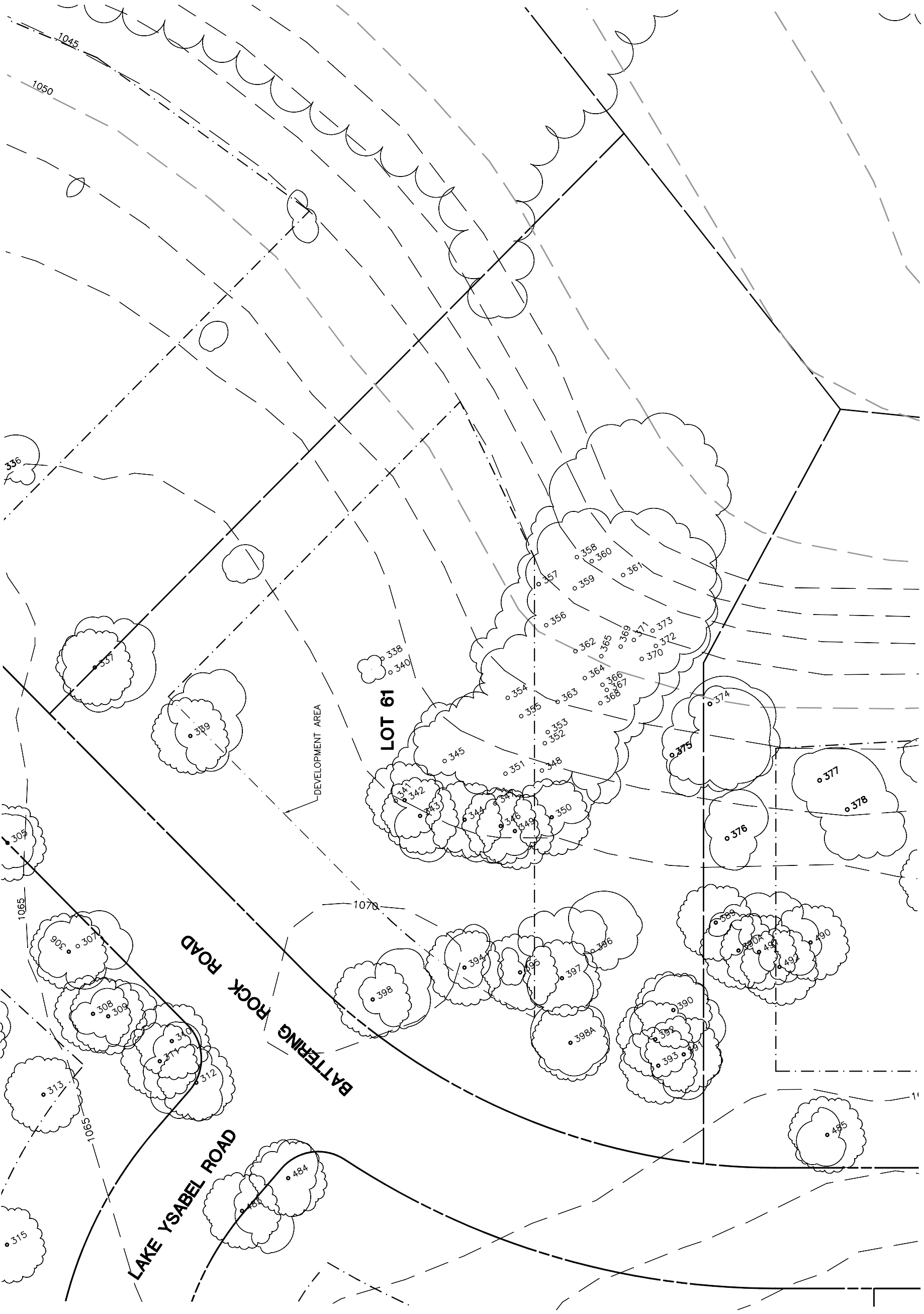


Lot 61			
Tree	Diameter (# of Trunks)	Type	Health
337	20	BLUE	56%
338	9	BLUE	32%
339	19	BLUE	68%
340	9	BLUE	32%
341	8 (2)	BLUE	12%
342	12	BLUE	24%
343	13	BLUE	40%
344	15	BLUE	32%
345	8	BLUE	40%
346	8	BLUE	20%
347	8	BLUE	24%
348	10	BLUE	32%
349	10	BLUE	16%
350	10	BLUE	40%
351	7	BLUE	12%
352	9	BLUE	40%
353	7	BLUE	24%
354	22 (2)	BLUE	72%
355	6	BLUE	4%
356	12	BLUE	48%
357	11	BLUE	36%
358	11 (2)	BLUE	60%
359	5	BLUE	4%
360	5	BLUE	4%
361	36	BLUE	52%
362	10	BLUE	36%
363	10	BLUE	40%
364	4	BLUE	4%
365	6	BLUE	24%
366	9	BLUE	36%
367	8 (2)	BLUE	8%
368	8	BLUE	36%
369	5	BLUE	24%
370	9	BLUE	40%
371	5	BLUE	24%
372	7	BLUE	24%
373	5	BLUE	16%
375	19	BLUE	68%
390	14	BLUE	40%
391	16	BLUE	52%
392	16	BLUE	68%
393	12	BLUE	24%
394	16	BLUE	68%
395	12	BLUE	60%
396	22	BLUE	60%
397	10	BLUE	24%
398	11	BLUE	40%
398A	11	BLUE	40%



**INDIVIDUAL SITE PLANS**  
**SANTA YSABEL RANCH**  
**COAL 99-0229**  
**LOT 61**

SHEET  
**1**  
 OF 1

**eda**  
eda professionals  
 civil engineers • land surveyors • land planners  
 1914 28th Street, Suite 200 • San Diego, CA 92106  
 phone: 619-594-9693 • email: eda@edapro.com

REV.	BY	DATE	DESCRIPTION

NOTE: TREE DATA BASED ON OAK TREE ASSESSMENT BY JACK BRAZEL ON 10.24.00.

NOTE: ALL TREES OUTSIDE OF BUILDING ENVELOPE TO BE PROTECTED. TREES MAY BE REMOVED BY PERMIT IF NECESSARY FOR DRIVEWAY ACCESS BUT REMOVAL WILL BE MINIMIZED.

NOTE: ALL TREE LOCATIONS WITHIN BUILDING ENVELOPE TO BE VERIFIED PRIOR TO PERMITTING

PLOT: 7/26/02  
 32234-000\ALHOUSE\LOTS\