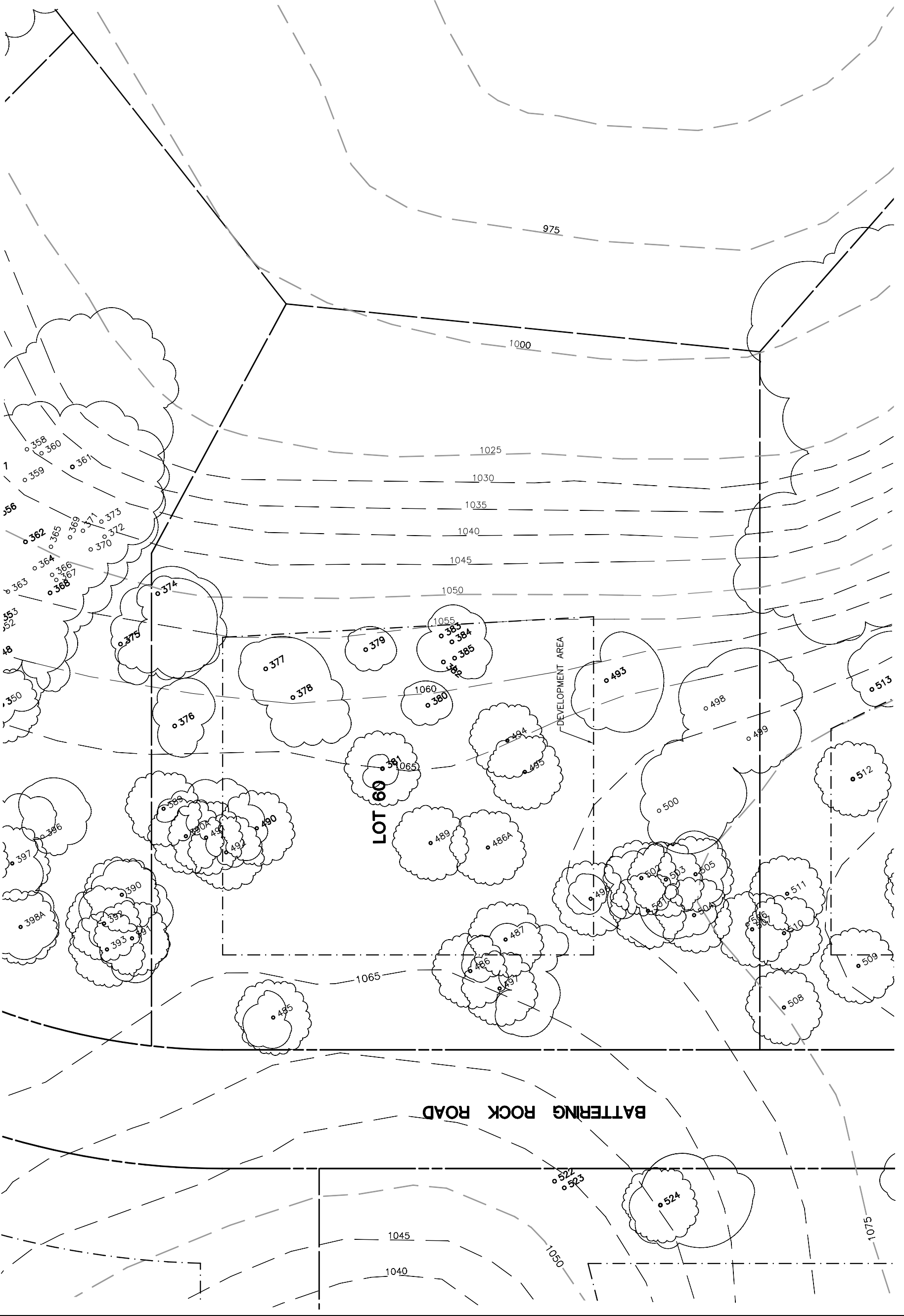
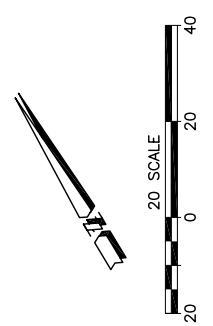


Lot 60				
Tree	Diameter	Type	Health	Must Save (visual mitigation)
374	12	BLUE	28%	
376	12 (2)	BLUE	48%	
377	20	BLUE	68%	X
378	9	BLUE	32%	X
379	8	BLUE	32%	X
380	4	BLUE	20%	
381	17	BLUE	73%	
382	5	BLUE	20%	
383	8	BLUE	40%	X
384	6	BLUE	24%	X
385	8	BLUE	40%	X
389	6	BLUE	4%	
485	16 (2)	BLUE	68%	
486	10 (2)	BLUE	8%	X
487	17	BLUE	48%	
489	16	BLUE	72%	
490	34 ●	BLUE	60%	
491	6 (2) ●	BLUE	20% ●	
492	13	BLUE	44%	
493	16	BLUE	64%	
494	10	BLUE	28%	
495	10 (3) ●	BLUE	72%	
496	8	BLUE	44%	
497	19	BLUE	72%	
498	10 (2)	BLUE	28%	
499	17	BLUE	52%	
500	20 ●	BLUE	68%	
501	14 (2)	BLUE	72%	
502	8	BLUE	20%	
503	8 (3)	BLUE	12%	
504	14 (3)	BLUE	20%	
505	10	BLUE	20%	
506	8	BLUE	20%	
507	8	BLUE	12%	
486A	9	BLUE	35%	
390A	11	BLUE	40%	

NOTE: ● = ORIGINAL DATA
 ○ = MODIFIED BY
 ALTHOUSE
 & MEADE, INC.



NOTE: TREE DATA BASED ON OAK TREE ASSESSMENT BY JACK BRAZEL ON 10.24.00.

NOTE: ALL TREES OUTSIDE OF BUILDING ENVELOPE TO BE PROTECTED. TREES MAY BE REMOVED BY PERMIT IF NECESSARY FOR DRIVEWAY ACCESS BUT REMOVAL WILL BE MINIMIZED.

NOTE: ALL TREE LOCATIONS WITHIN BUILDING ENVELOPE TO BE VERIFIED PRIOR TO PERMITTING.

PLT'D: 7/26/02

REV.	BY	DATE	DESCRIPTION

eda
 civil engineers • land planners
 1914 26th Street, Suite 100
 Fort Lauderdale, FL 33304
 phone: 954-562-8888 • email: eda@edafla.com

INDIVIDUAL SITE PLANS
SANTA YSABEL RANCH
COAL 99-0229
LOT 60

SHEET
1
 OF 1