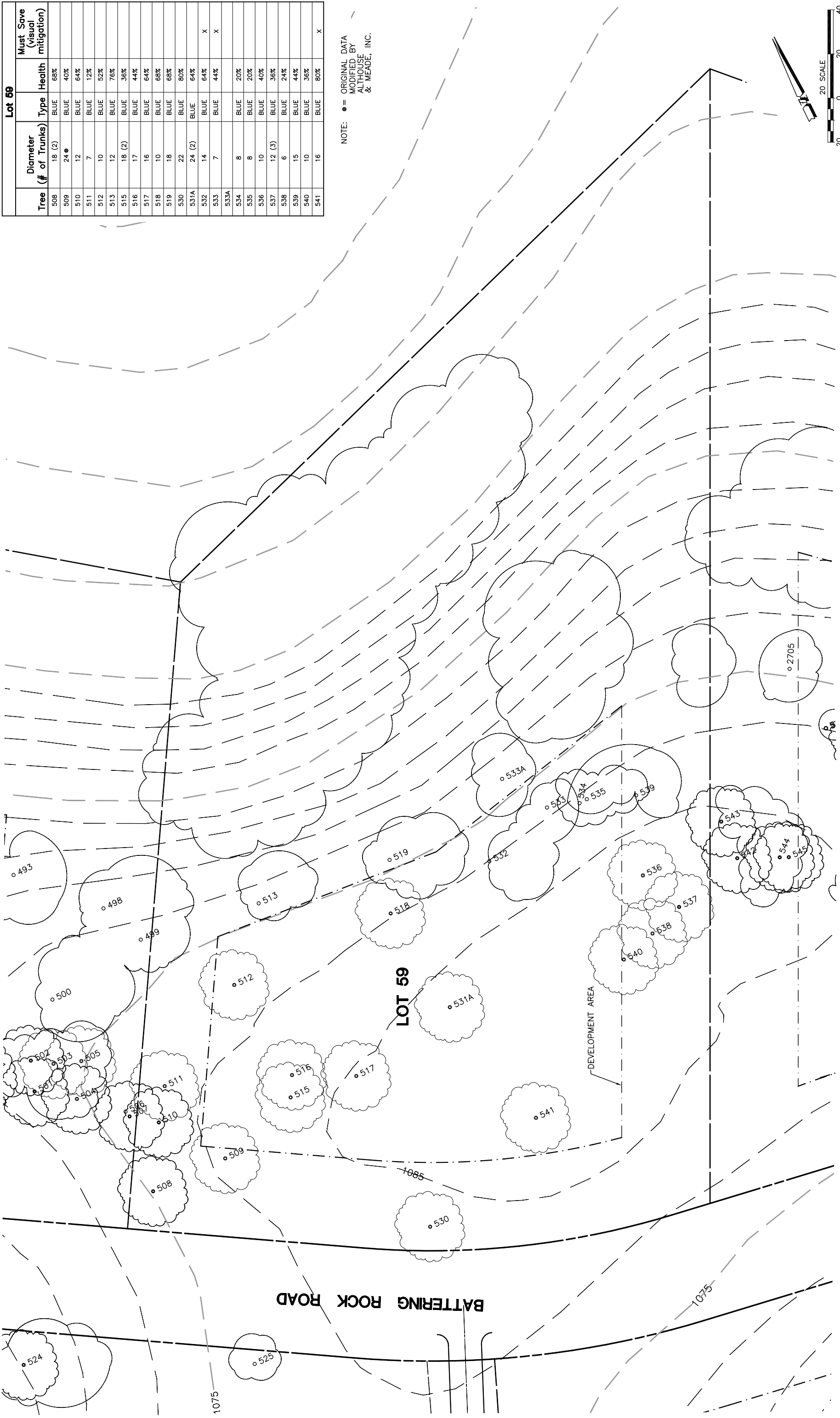


Lot 59				
Tree	Diameter (# of Trunks)	Type	Health	Must Save (visual mitigation)
508	18 (2)	BLUE	68%	
509	24 ●	BLUE	40%	
510	12	BLUE	64%	
511	7	BLUE	12%	
512	10	BLUE	52%	
513	12	BLUE	76%	
515	18 (2)	BLUE	36%	
516	17	BLUE	44%	
517	16	BLUE	64%	
518	10	BLUE	68%	
519	18	BLUE	68%	
530	22	BLUE	80%	
531A	24 (2)	BLUE	64%	
532	14	BLUE	64%	X
533	7	BLUE	44%	X
533A				
534	8	BLUE	20%	
535	8	BLUE	20%	
536	10	BLUE	40%	
537	12 (3)	BLUE	36%	
538	6	BLUE	24%	
539	15	BLUE	44%	
540	10	BLUE	36%	
541	16	BLUE	80%	X

NOTE: ● = ORIGINAL DATA
 ○ = MODIFIED BY
 ALTHOUSE
 & MEADE, INC.



INDIVIDUAL SITE PLANS
 SANTA YSABEL RANCH
 COAL 99-0229
 LOT 59



REV.	BY	DATE	DESCRIPTION

NOTE: ALL TREE LOCATIONS WITHIN BUILDING ENVELOPE TO BE VERIFIED PRIOR TO PERMITTING

NOTE: ALL TREES OUTSIDE OF BUILDING ENVELOPE TO BE PROTECTED. TREES MAY BE REMOVED BY PERMIT IF NECESSARY FOR DRIVEWAY ACCESS BUT REMOVAL WILL BE MINIMIZED.

NOTE: TREE DATA BASED ON OAK TREE ASSESSMENT BY JACK BRAZEL ON 10.24.00.

PLT'D: 7/26/02