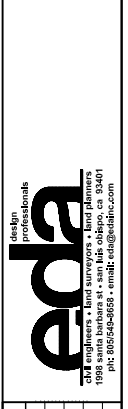
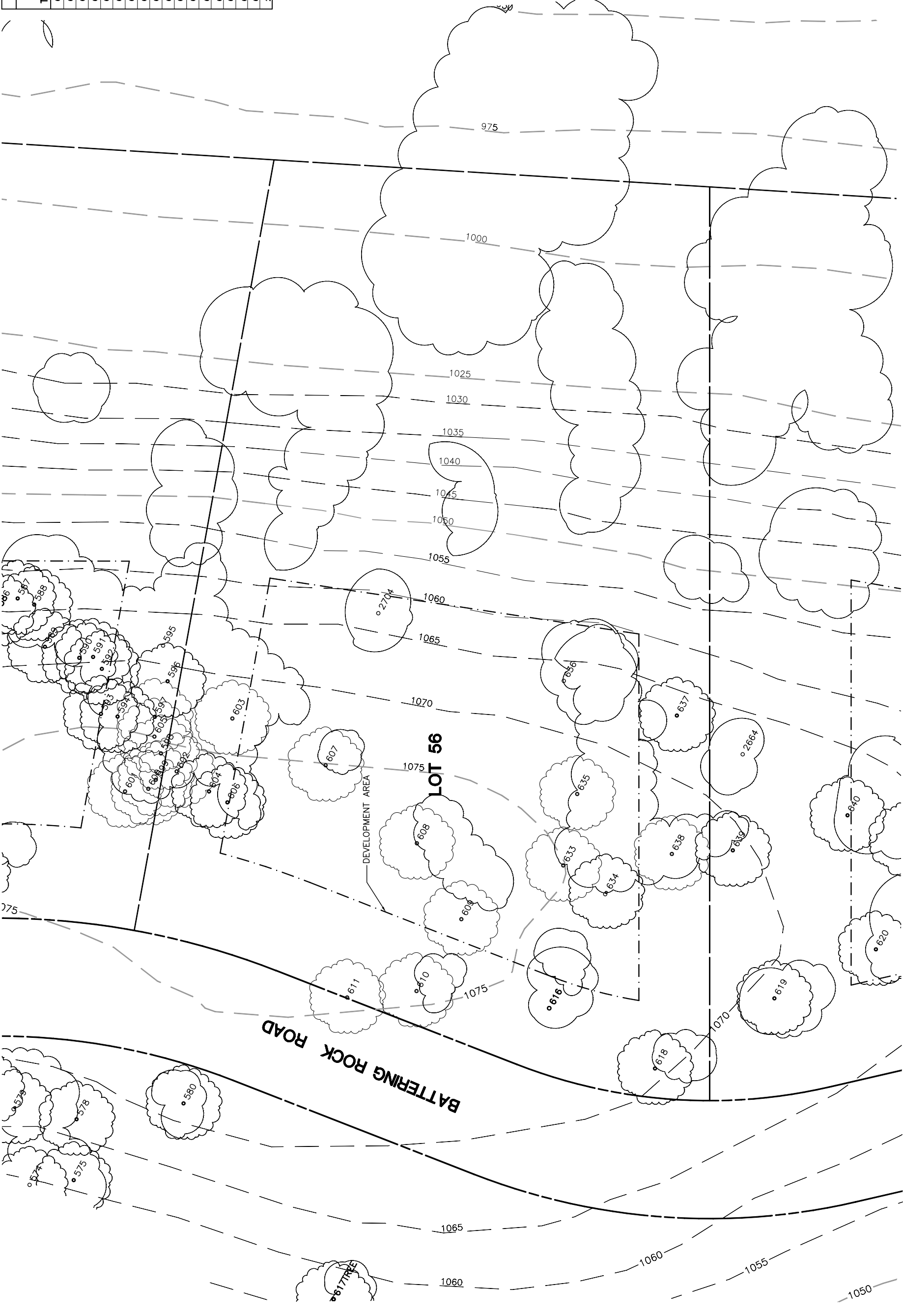


Lot 56				
Tree	Diameter	Type	Health	Must Save (visual mitigation)
602	8	BLUE	16%	
603	22	BLUE	40%	
604	7	BLUE	16%	
606	14	BLUE	8%	
607	11	BLUE	40%	
608	16	BLUE	60%	
609	14	BLUE	60%	X
610	13	BLUE	40%	
611	12	BLUE	64%	X
616	12	BLUE	68%	X
618	15	BLUE	68%	
633	15	BLUE	40%	
634	14	BLUE	40%	
635	19	BLUE	72%	
636	16	BLUE	72%	
637	17	BLUE	60%	
638	20	BLUE	64%	
2704	14	BLUE	50%	



REV.	BY	DATE	DESCRIPTION

NOTE: ALL TREES OUTSIDE OF BUILDING ENVELOPE TO BE PROTECTED. TREES MAY BE REMOVED BY PERMIT IF NECESSARY FOR DRIVEWAY ACCESS BUT REMOVAL WILL BE MINIMIZED.

NOTE: TREE DATA BASED ON OAK TREE ASSESSMENT BY JACK BRAZEL ON 10.24.00.

NOTE: ALL TREE LOCATIONS WITHIN BUILDING ENVELOPE TO BE VERIFIED PRIOR TO PERMITTING