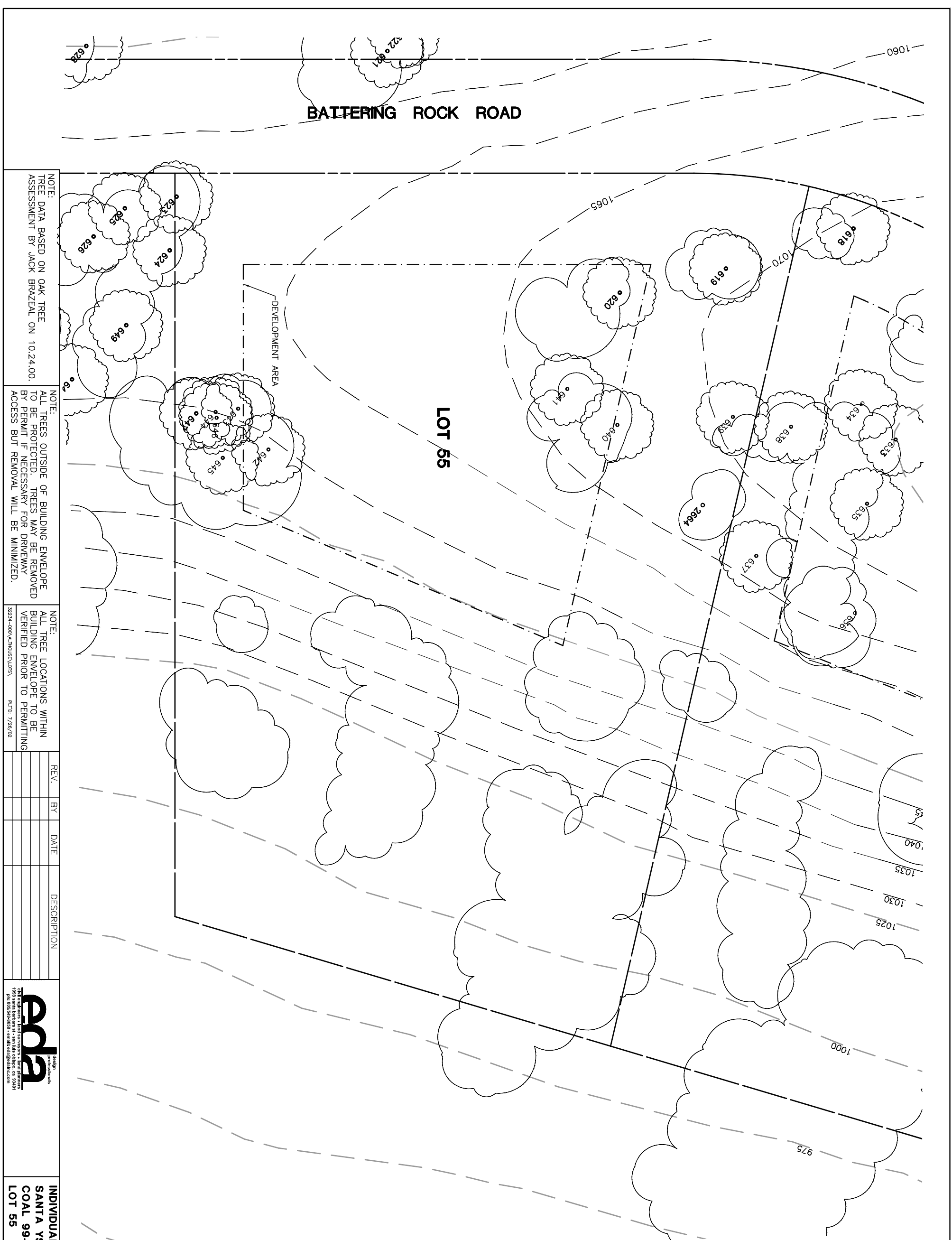


Lot 55				
Tree (# of Trunks)	Type	Health	Must Save (visual mitigation)	
619 26	BLUE	80%		X
620 24	BLUE	64%		
623 9	BLUE	40%		
639 9	BLUE	32%		
640 18	BLUE	68%		
641 16	BLUE	24%		
642 14 (2)	BLUE	60%		
643 10	BLUE	16%		
644 16	BLUE	40%		
645 11	BLUE	36%		
646 9	BLUE	20%		
647 18 (2)	BLUE	24%		
2664 8	BLUE	10%		



BATTERING ROCK ROAD

LOT 55

DEVELOPMENT AREA

NOTE: TREE DATA BASED ON OAK TREE ASSESSMENT BY JACK BRAZEAU ON 10.24.00.

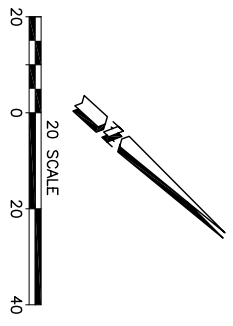
NOTE: ALL TREES OUTSIDE OF BUILDING ENVELOPE TO BE PROTECTED. TREES MAY BE REMOVED BY PERMIT IF NECESSARY FOR DRIVEWAY ACCESS BUT REMOVAL WILL BE MINIMIZED.

NOTE: ALL TREE LOCATIONS WITHIN BUILDING ENVELOPE TO BE VERIFIED PRIOR TO PERMITTING

REV.	BY	DATE	DESCRIPTION



INDIVIDUAL SITE PLANS
SANTA YSABEL RANCH
COAL 99-0229
LOT 55



SHEET
1
OF 1