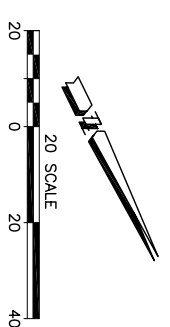
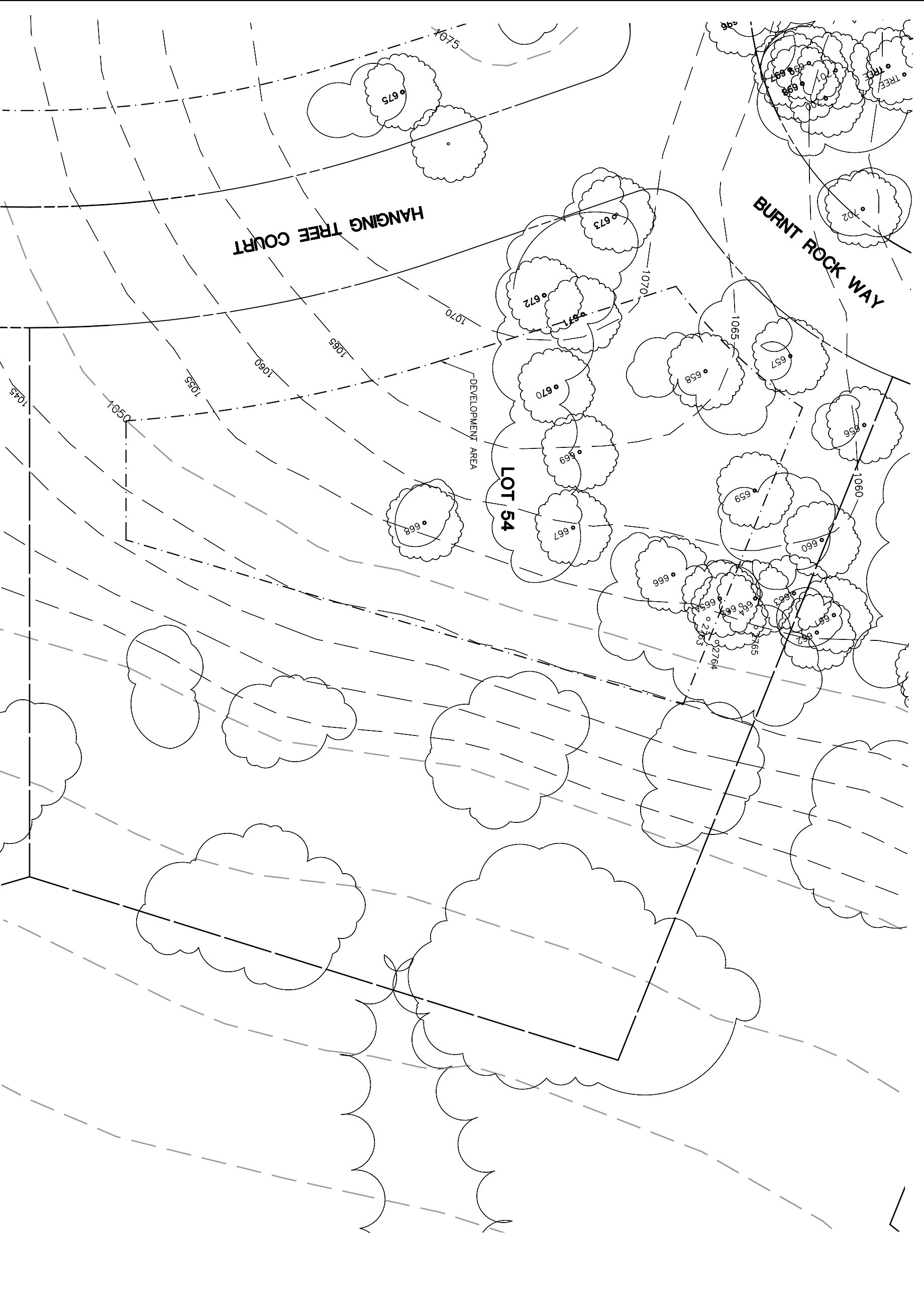


Lot 54				
Tree	Diameter	Type	Health	Must Save (visual mitigation)
656	13	BLUE	32%	X
657	22	BLUE	60%	
658	19	BLUE	40%	
659	18	BLUE	60%	
660	9	BLUE	44%	
663	6	BLUE	4%	
664	8	BLUE	4%	
665 A	6	BLUE	28%	
665	8	BLUE	4%	
666	19	BLUE	52%	
667	10	BLUE	52%	
668	10	BLUE	68%	
669	9	BLUE	68%	
670	10	BLUE	40%	
671	38 ●	BLUE	76%	X
672	6	BLUE	12%	
673	38 ●	BLUE	68%	
2763	7.4 (2)	BLUE	30%	X
2764	5.6 (2)	BLUE	45%	
2765	4.4 (2)	BLUE	30%	

NOTE: ● = ORIGINAL DATA
 MODIFIED BY
 ALTHOUSE
 & MEADE, INC.



NOTE: TREE DATA BASED ON OAK TREE ASSESSMENT BY JACK BRAZEAU ON 10.24.00.

NOTE: ALL TREES OUTSIDE OF BUILDING ENVELOPE TO BE PROTECTED. TREES MAY BE REMOVED BY PERMIT IF NECESSARY FOR DRIVEWAY ACCESS BUT REMOVAL WILL BE MINIMIZED.

NOTE: ALL TREE LOCATIONS WITHIN BUILDING ENVELOPE TO BE VERIFIED PRIOR TO PERMITTING

REV.	BY	DATE	DESCRIPTION



INDIVIDUAL SITE PLANS
 SANTA YSABEL RANCH
 COAL 99-0229
 LOT 54

S H E E T
 1
 OF 1