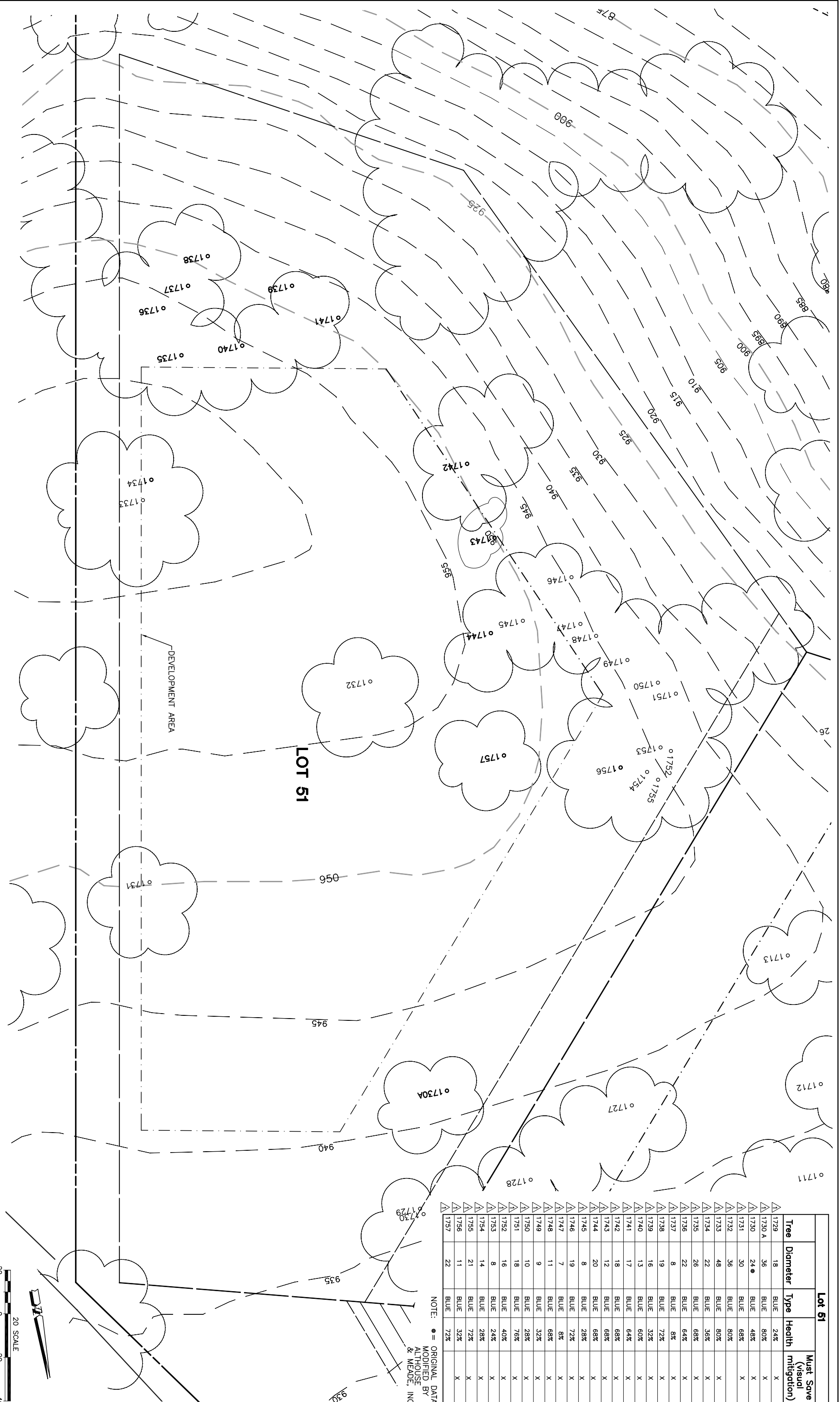


Lot 51				
Tree	Diameter	Type	Health	Must Save (visual mitigation)
△ 1729	18	BLUE	24%	X
△ 1730 A	36	BLUE	80%	X
△ 1730	24 ●	BLUE	48%	X
△ 1731	30	BLUE	68%	X
△ 1732	36	BLUE	80%	X
△ 1733	48	BLUE	80%	X
△ 1734	22	BLUE	56%	X
△ 1735	26	BLUE	68%	X
△ 1736	22	BLUE	64%	X
△ 1737	8	BLUE	8%	X
△ 1738	19	BLUE	72%	X
△ 1739	16	BLUE	32%	X
△ 1740	13	BLUE	60%	X
△ 1741	17	BLUE	64%	X
△ 1742	18	BLUE	68%	X
△ 1743	12	BLUE	68%	X
△ 1744	20	BLUE	68%	X
△ 1745	8	BLUE	28%	X
△ 1746	19	BLUE	72%	X
△ 1747	7	BLUE	8%	X
△ 1748	11	BLUE	68%	X
△ 1749	9	BLUE	32%	X
△ 1750	10	BLUE	28%	X
△ 1751	18	BLUE	76%	X
△ 1752	16	BLUE	40%	X
△ 1753	8	BLUE	24%	X
△ 1754	14	BLUE	28%	X
△ 1755	21	BLUE	72%	X
△ 1756	11	BLUE	32%	X
△ 1757	22	BLUE	72%	X

NOTE: ● = ORIGINAL DATA  
 △ = MODIFIED BY  
 ALTHOUSE  
 & MEADE, INC.



NOTE: TREE DATA BASED ON OAK TREE ASSESSMENT BY JACK BRAZEL ON 10.24.00.

NOTE: ALL TREES OUTSIDE OF BUILDING ENVELOPE TO BE PROTECTED. TREES MAY BE REMOVED BY PERMIT IF NECESSARY FOR DRIVEWAY ACCESS BUT REMOVAL WILL BE MINIMIZED.

NOTE: ALL TREE LOCATIONS WITHIN BUILDING ENVELOPE TO BE VERIFIED PRIOR TO PERMITTING

REV.	BY	DATE	DESCRIPTION
1		05.16.03	PER CONDITIONS

INDIVIDUAL SITE PLANS  
 SANTA YSABEL RANCH  
 COAL 99-0229  
 LOT 51

SHEET  
 1  
 OF 1

