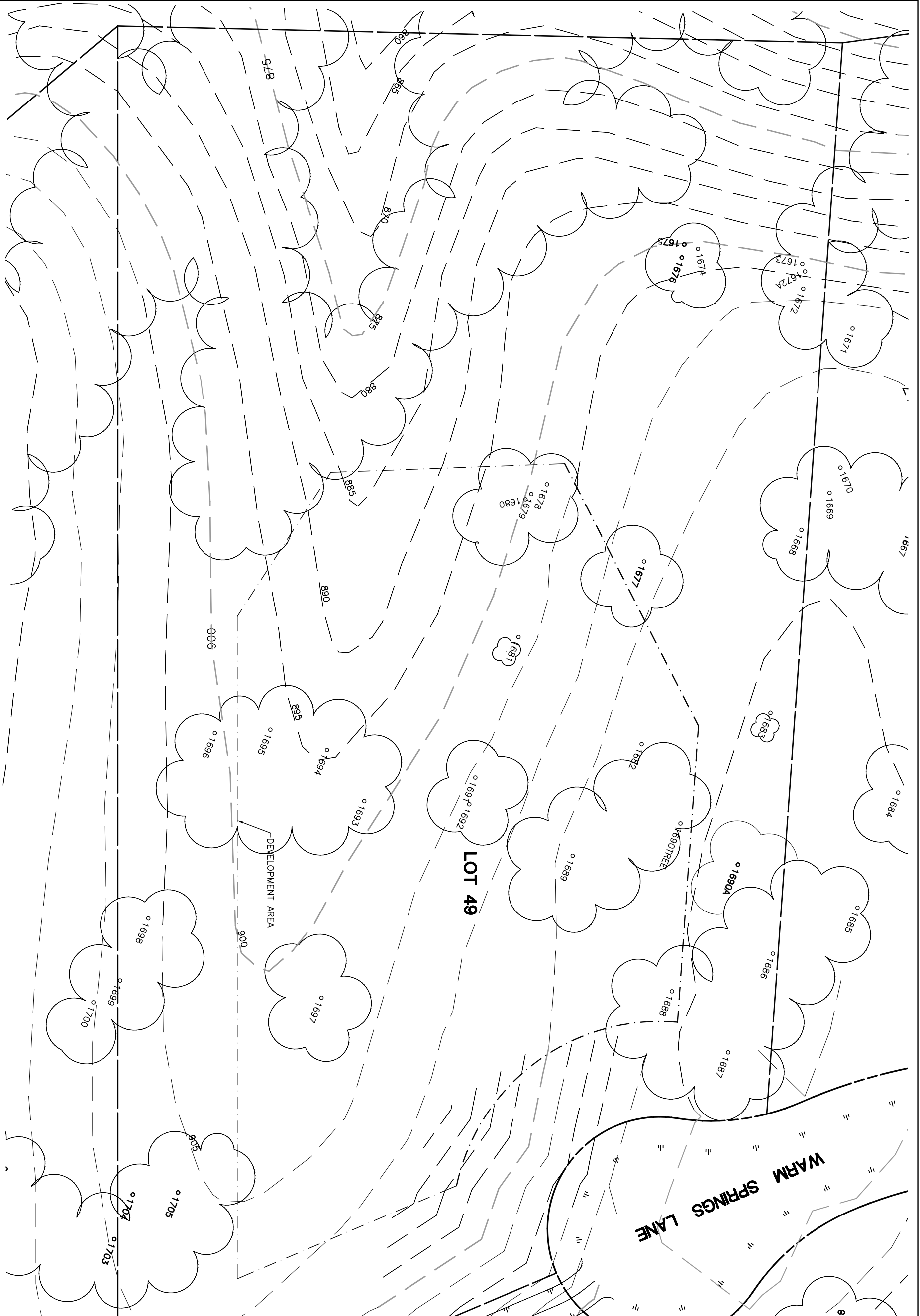


Lot 49				
Tree	Diameter	Type	Health	Must Save (visual mitigation)
1668	17	BLUE	64%	X
1672	9	BLUE	28%	X
1672A	8	BLUE	30%	X
1673	18	BLUE	40%	X
1674	12	BLUE	32%	X
1675	6	BLUE	24%	X
1676	9	BLUE	60%	X
1677	19	BLUE	80%	X
1678	14	BLUE	40%	X
1679	13	BLUE	40%	X
1680	16	BLUE	28%	X
1681	10	BLUE	68%	X
1682	12	BLUE	68%	X
1683	13	BLUE	32%	X
1686	18	BLUE	68%	X
1687	18	BLUE	60%	X
1688	26	BLUE	80%	X
1689	30	BLUE	80%	X
1690 A	16	BLUE	44%	X
1690	17	BLUE	40%	X
1691	14	BLUE	40%	X
1692	14	BLUE	32%	X
1693	24	BLUE	32%	X
1694	28	BLUE	40%	X
1695	20	BLUE	48%	X
1696	32	BLUE	48%	X
1697	30	BLUE	68%	X
1698	34	BLUE	60%	X
1699	34	BLUE	60%	X
1703	24	BLUE	48%	X
1704	20	BLUE	40%	X
1705	36	BLUE	76%	X
1706	18	BLUE	60%	X



NOTE: TREE DATA BASED ON OAK TREE ASSESSMENT BY JACK BRAZEL ON 10.24.00.

NOTE: ALL TREES OUTSIDE OF BUILDING ENVELOPE TO BE PROTECTED. TREES MAY BE REMOVED BY PERMIT IF NECESSARY FOR DRIVEWAY ACCESS BUT REMOVAL WILL BE MINIMIZED.

NOTE: ALL TREE LOCATIONS WITHIN BUILDING ENVELOPE TO BE VERIFIED PRIOR TO PERMITTING

REV.	BY	DATE	DESCRIPTION



INDIVIDUAL SITE PLANS  
 SANTA YSABEL RANCH  
 COAL 99-0229  
 LOT 49

S H E E T  
 1  
 OF 1