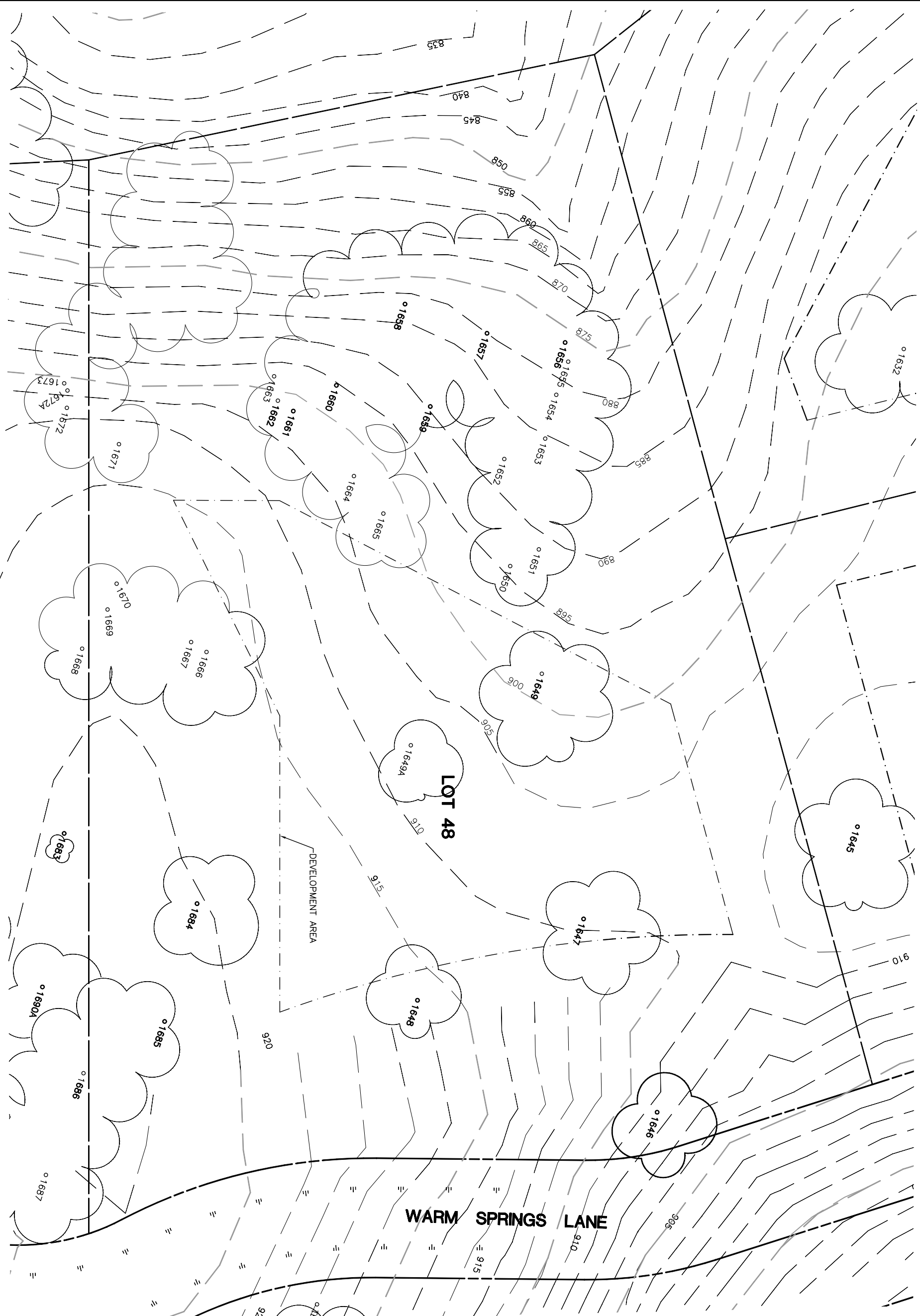


Lot 48				
Tree	Diameter	Type	Health	Must Save (visual mitigation)
1646	22	BLUE	60%	X
1647	30	BLUE	60%	X
1648	16	BLUE	64%	X
1649 A	28	BLUE	38%	X
1649	40	BLUE	80%	X
1650	14	BLUE	48%	X
1651	14	BLUE	40%	X
1652	14	BLUE	60%	X
1653	16	BLUE	72%	X
1654	8	BLUE	24%	X
1655	12	BLUE	28%	X
1656	16	BLUE	32%	X
1657	30	BLUE	80%	X
1658	32	BLUE	80%	X
1659	36	BLUE	0%	X
1660	32	BLUE	68%	X
1661	10	BLUE	28%	X
1662	13	BLUE	28%	X
1663	9	BLUE	24%	X
1664	13	BLUE	24%	X
1665	19	BLUE	80%	X
1666	34	BLUE	40%	X
1667	44	BLUE	60%	X
1669	10	BLUE	24%	X
1670	13	BLUE	36%	X
1671	19	BLUE	80%	X
1684	28	BLUE	72%	X
1695	19	BLUE	64%	X



NOTE: TREE DATA BASED ON OAK TREE ASSESSMENT BY JACK BRAZEAU ON 10.24.00.

NOTE: ALL TREES OUTSIDE OF BUILDING ENVELOPE TO BE PROTECTED. TREES MAY BE REMOVED BY PERMIT IF NECESSARY FOR DRIVEWAY ACCESS BUT REMOVAL WILL BE MINIMIZED.

NOTE: ALL TREE LOCATIONS WITHIN BUILDING ENVELOPE TO BE VERIFIED PRIOR TO PERMITTING

REV.	BY	DATE	DESCRIPTION

eda professionals
 2018 engineers • land surveyors • land planners
 1500 South Bascom Avenue, Suite 300
 San Jose, CA 95128
 Phone: (408) 951-1000 • Fax: (408) 951-1001

INDIVIDUAL SITE PLANS
 SANTA YSABEL RANCH
 COAL 99-0229
 LOT 48

S H E E T
1
 OF 1