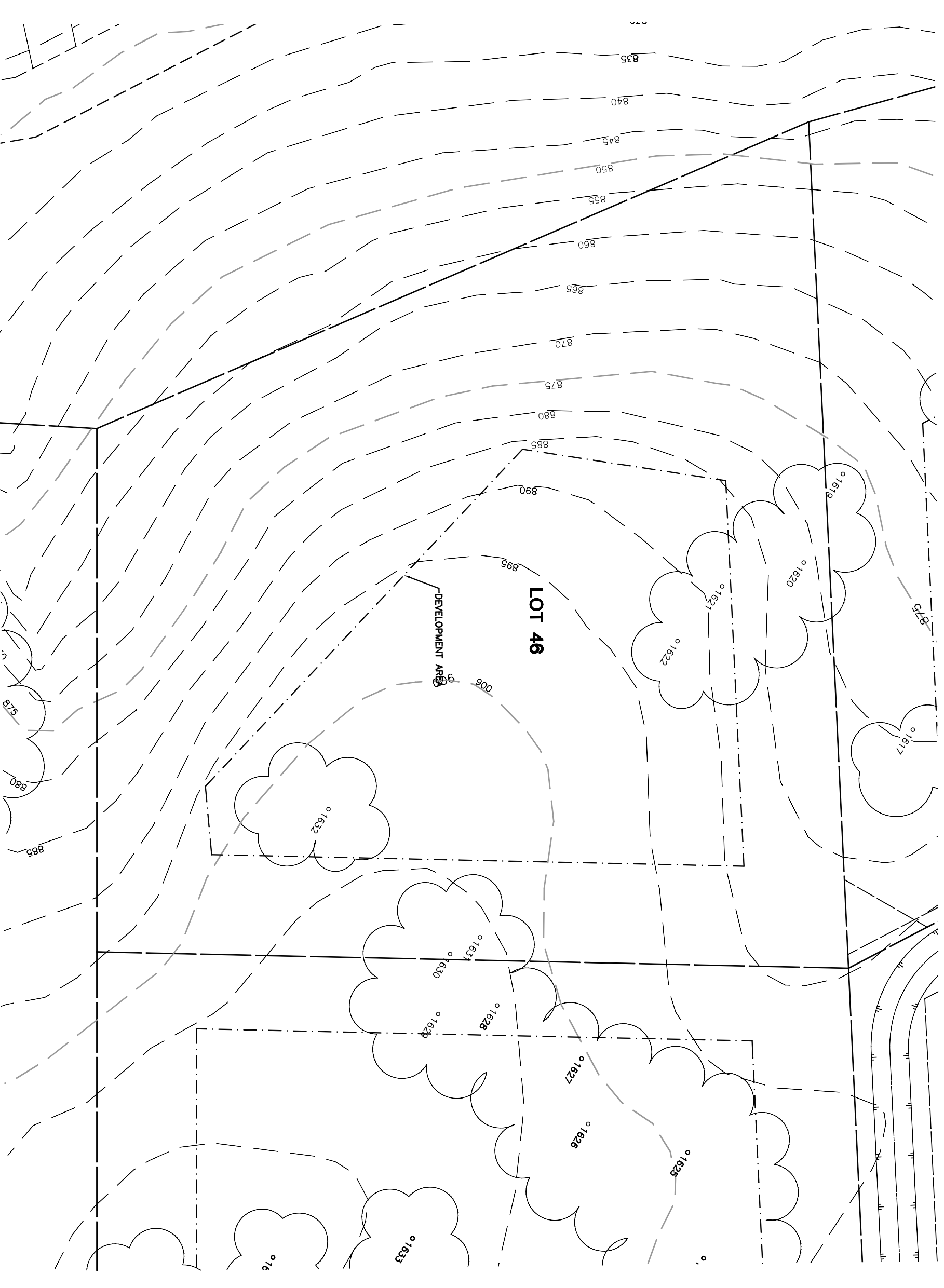


Lot 46			
Tree	Diameter	Type	Health
1620	28	BLUE	60%
1621	48	BLUE	80%
1622	30	BLUE	80%
1630	25	BLUE	64%
1631	24	BLUE	40%
1632	40	BLUE	72%



NOTE: TREE DATA BASED ON OAK TREE ASSESSMENT BY JACK BRAZEAL ON 10.24.00.

NOTE: ALL TREES OUTSIDE OF BUILDING ENVELOPE TO BE PROTECTED. TREES MAY BE REMOVED BY PERMIT IF NECESSARY FOR DRIVEWAY ACCESS BUT REMOVAL WILL BE MINIMIZED.

NOTE: ALL TREE LOCATIONS WITHIN BUILDING ENVELOPE TO BE VERIFIED PRIOR TO PERMITTING

REV.	BY	DATE	DESCRIPTION

edpa professionals
 4018 engineers • 3000 surveyors • 1000 planners
 1000 soil scientists • 1000 architects • 1000 interior designers
 1000 landscape architects • 1000 civil engineers
 1000 mechanical engineers • 1000 electrical engineers
 1000 chemical engineers • 1000 industrial engineers
 1000 environmental engineers • 1000 food engineers
 1000 textile engineers • 1000 paper engineers
 1000 petroleum engineers • 1000 nuclear engineers
 1000 aerospace engineers • 1000 marine engineers
 1000 transportation engineers • 1000 construction engineers
 1000 agricultural engineers • 1000 mining engineers
 1000 metallurgical engineers • 1000 ceramic engineers
 1000 glass engineers • 1000 leather engineers
 1000 rubber engineers • 1000 plastic engineers
 1000 wood engineers • 1000 stone engineers
 1000 brick engineers • 1000 tile engineers
 1000 concrete engineers • 1000 masonry engineers
 1000 iron engineers • 1000 steel engineers
 1000 copper engineers • 1000 aluminum engineers
 1000 zinc engineers • 1000 lead engineers
 1000 tin engineers • 1000 nickel engineers
 1000 cobalt engineers • 1000 manganese engineers
 1000 silicon engineers • 1000 boron engineers
 1000 phosphorus engineers • 1000 sulfur engineers
 1000 calcium engineers • 1000 magnesium engineers
 1000 potassium engineers • 1000 sodium engineers
 1000 chlorine engineers • 1000 bromine engineers
 1000 iodine engineers • 1000 fluorine engineers
 1000 oxygen engineers • 1000 nitrogen engineers
 1000 carbon engineers • 1000 hydrogen engineers
 1000 helium engineers • 1000 neon engineers
 1000 argon engineers • 1000 krypton engineers
 1000 xenon engineers • 1000 radon engineers

INDIVIDUAL SITE PLANS
 SANTA YSABEL RANCH
 COAL 99-0229
 LOT 46

SHEET
 1
 OF 1