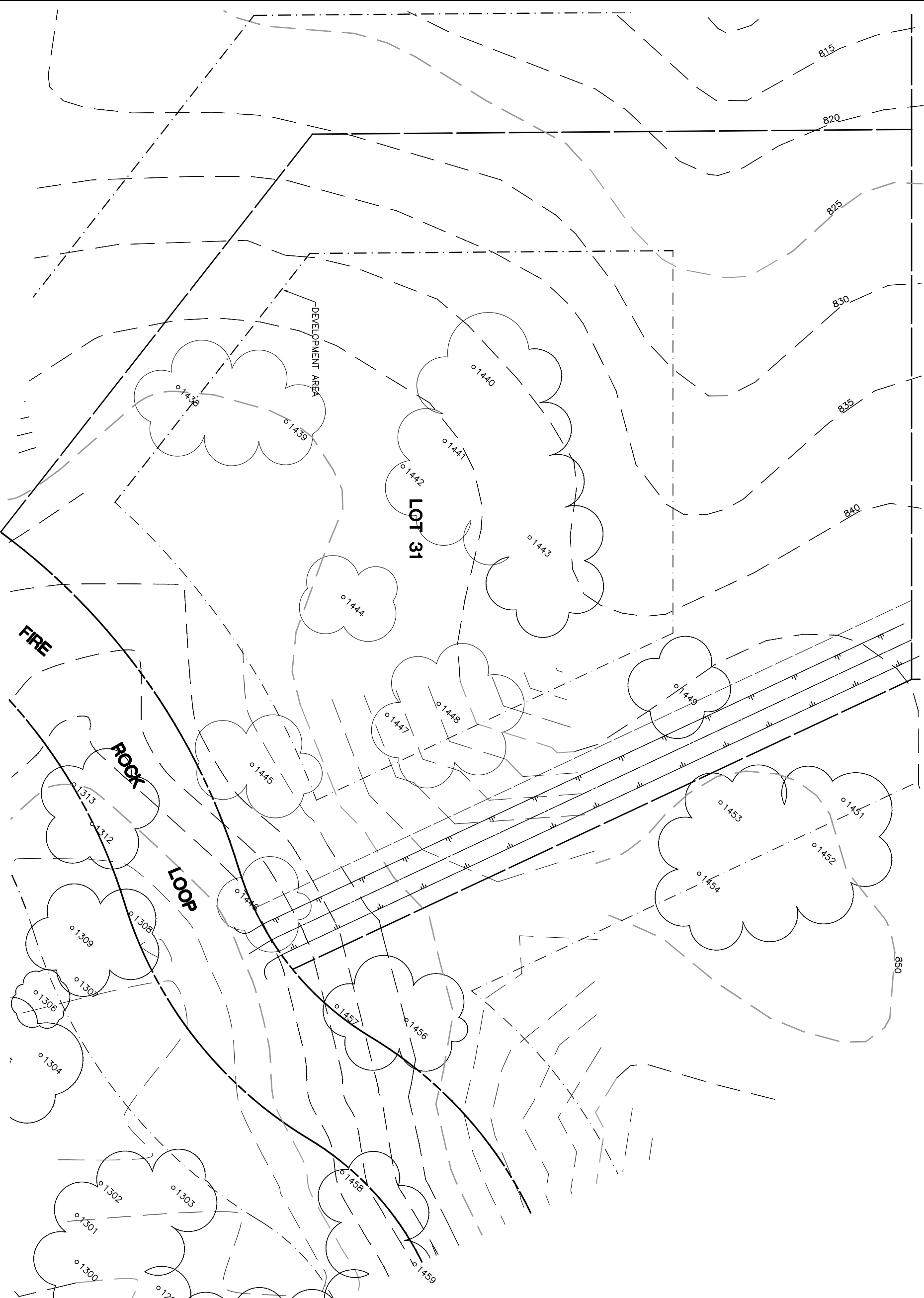


Lot 31			
Tree (# of Trunks)	Type	Health	Must Save (visual mitigation)
1438	BLUE	80%	X
1439	BLUE	60%	X
1440	BLUE	80%	X
1441	BLUE	72%	X
1442	BLUE	48%	X
1443	BLUE	60%	X
1444	BLUE	72%	X
1445	BLUE	68%	X
1447	BLUE	68%	X
1448	BLUE	68%	X
1449	BLUE	76%	X

NOTE: ● = ORIGINAL DATA
 MODIFIED BY
 ALTHOUSE
 & MEADE, INC.



NOTE: TREE DATA BASED ON OAK TREE ASSESSMENT BY JACK BRAZEAL ON 10.24.00.

NOTE: ALL TREES OUTSIDE OF BUILDING ENVELOPE TO BE PROTECTED. TREES MAY BE REMOVED BY PERMIT IF NECESSARY FOR DRIVEWAY ACCESS BUT REMOVAL WILL BE MINIMIZED.

NOTE: ALL TREE LOCATIONS WITHIN BUILDING ENVELOPE TO BE VERIFIED PRIOR TO PERMITTING

REV.	BY	DATE	DESCRIPTION



INDIVIDUAL SITE PLANS
 SANTA YSABEL RANCH
 COAL 99-0229
 LOT 31

SHEET
 1
 OF 1

