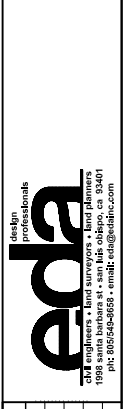
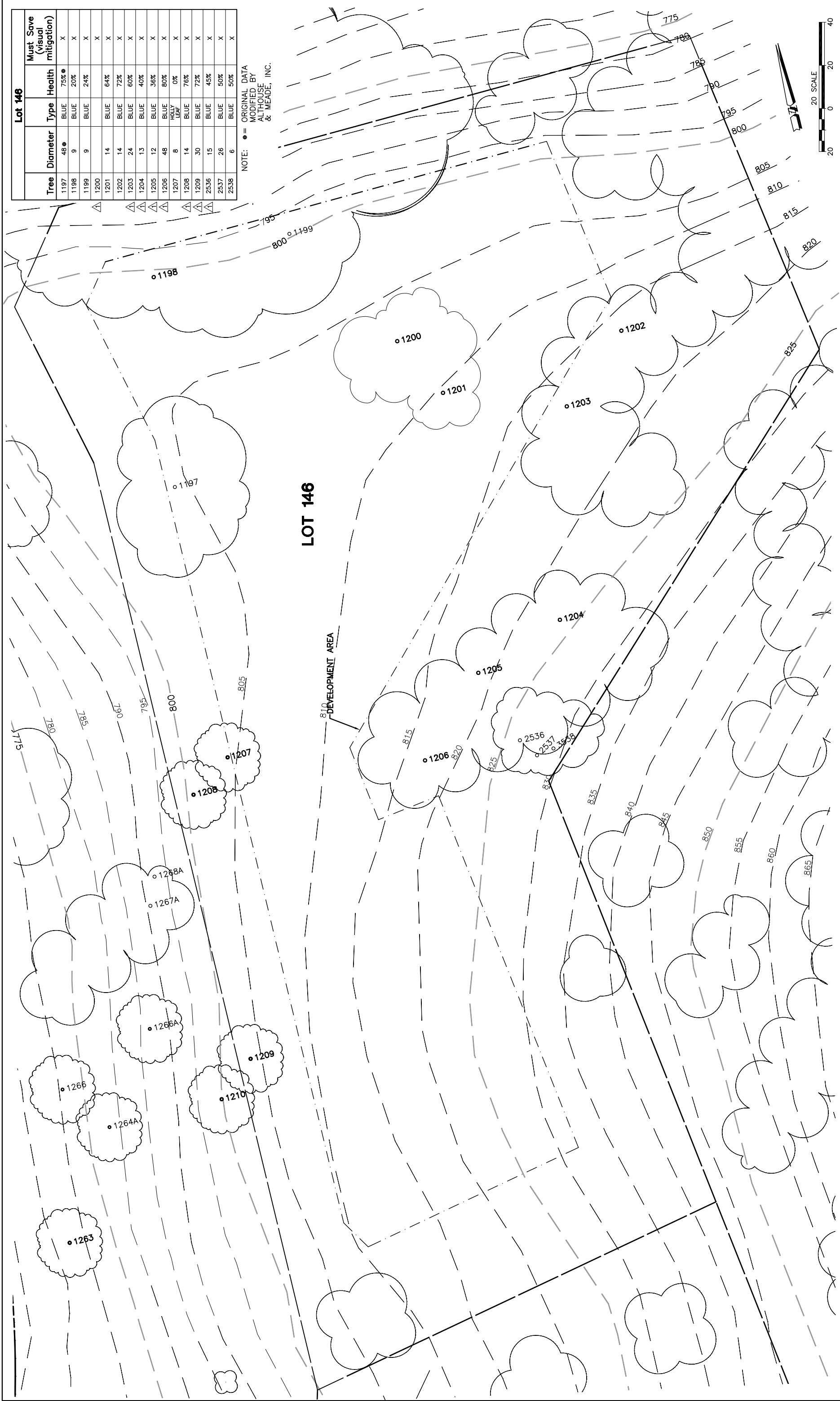


Lot 146				
Tree	Diameter	Type	Health	Must Save (visual mitigation)
1197	48	BLUE	75%	X
1198	9	BLUE	20%	X
1199	9	BLUE	24%	X
1200				X
1201	14	BLUE	64%	X
1202	14	BLUE	72%	X
1203	24	BLUE	60%	X
1204	13	BLUE	40%	X
1205	12	BLUE	36%	X
1206	48	BLUE	80%	X
1207	8	HOLLY LEAF	0%	X
1208	14	BLUE	76%	X
1209	30	BLUE	72%	X
2536	15	BLUE	45%	X
2537	26	BLUE	50%	X
2538	6	BLUE	50%	X

NOTE: ● = ORIGINAL DATA
 MODIFIED BY
 ALTHOUSE
 & MEADE, INC.



REV.	BY	DATE	DESCRIPTION
1		05.16.03	PER CONDITIONS

NOTE: ALL TREES OUTSIDE OF BUILDING ENVELOPE TO BE PROTECTED. TREES MAY BE REMOVED BY PERMIT IF NECESSARY FOR DRIVEWAY ACCESS BUT REMOVAL WILL BE MINIMIZED.

NOTE: TREE DATA BASED ON OAK TREE ASSESSMENT BY JACK BRAZEL ON 10.24.00.

NOTE: ALL TREE LOCATIONS WITHIN BUILDING ENVELOPE TO BE VERIFIED PRIOR TO PERMITTING