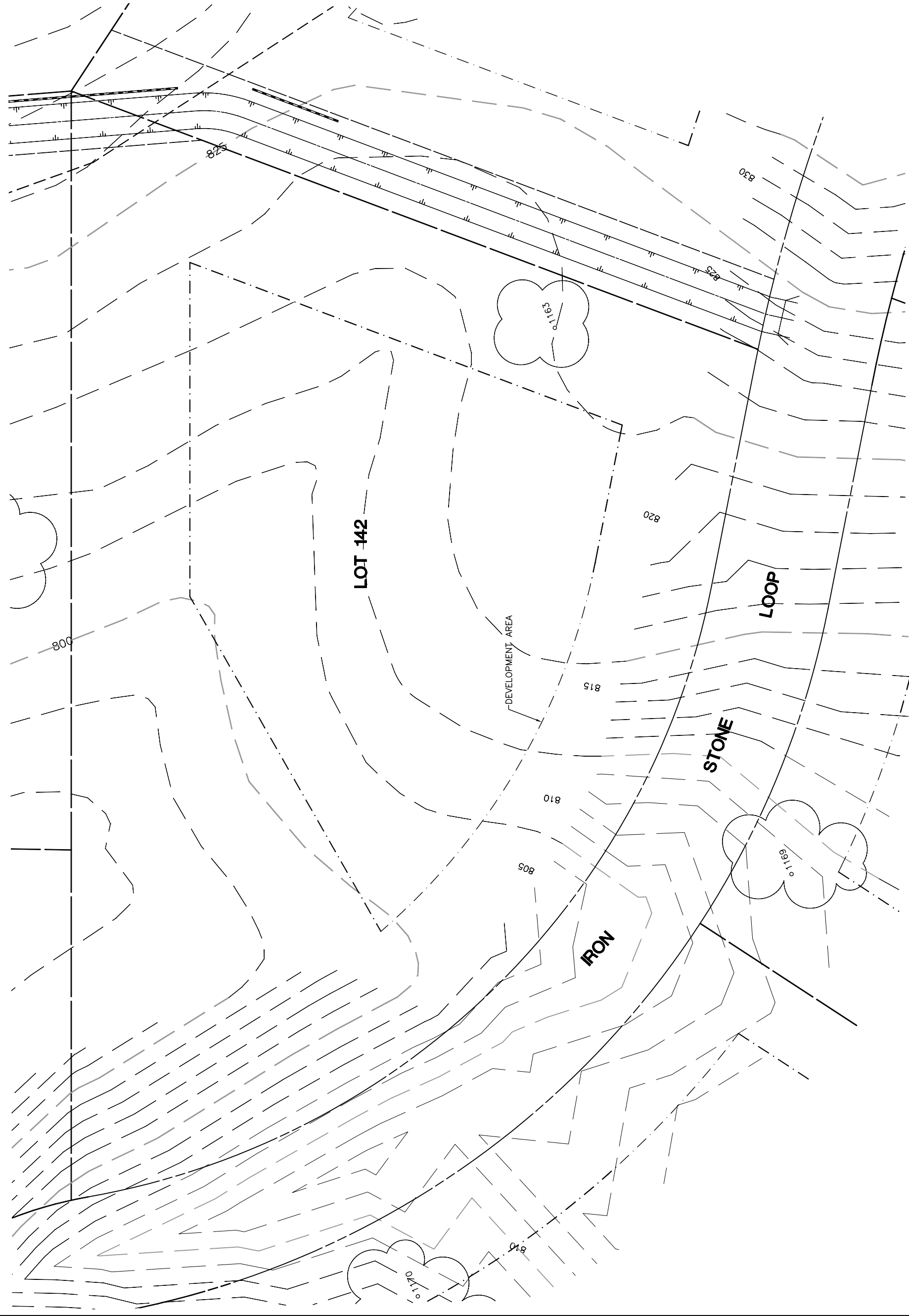


Lot 142			
Tree	Diameter	Type	Health
1163	22	VALLEY	64%
			Must Save (visual mitigation)
			X



NOTE: TREE DATA BASED ON OAK TREE ASSESSMENT BY JACK BRAZEL ON 10.24.00.

NOTE: ALL TREES OUTSIDE OF BUILDING ENVELOPE TO BE PROTECTED. TREES MAY BE REMOVED BY PERMIT IF NECESSARY FOR DRIVEWAY ACCESS BUT REMOVAL WILL BE MINIMIZED.

NOTE: ALL TREE LOCATIONS WITHIN BUILDING ENVELOPE TO BE VERIFIED PRIOR TO PERMITTING

REV.	BY	DATE	DESCRIPTION

eda
 civil engineers • land surveyors • land planners
 1914 S. Bascom Avenue, Suite 200
 Palo Alto, CA 94308 • email: eda@eda.com

INDIVIDUAL SITE PLANS
 SANTA YSABEL RANCH
 COAL 99-0229
 LOT 142

SHEET
 1
 OF 1