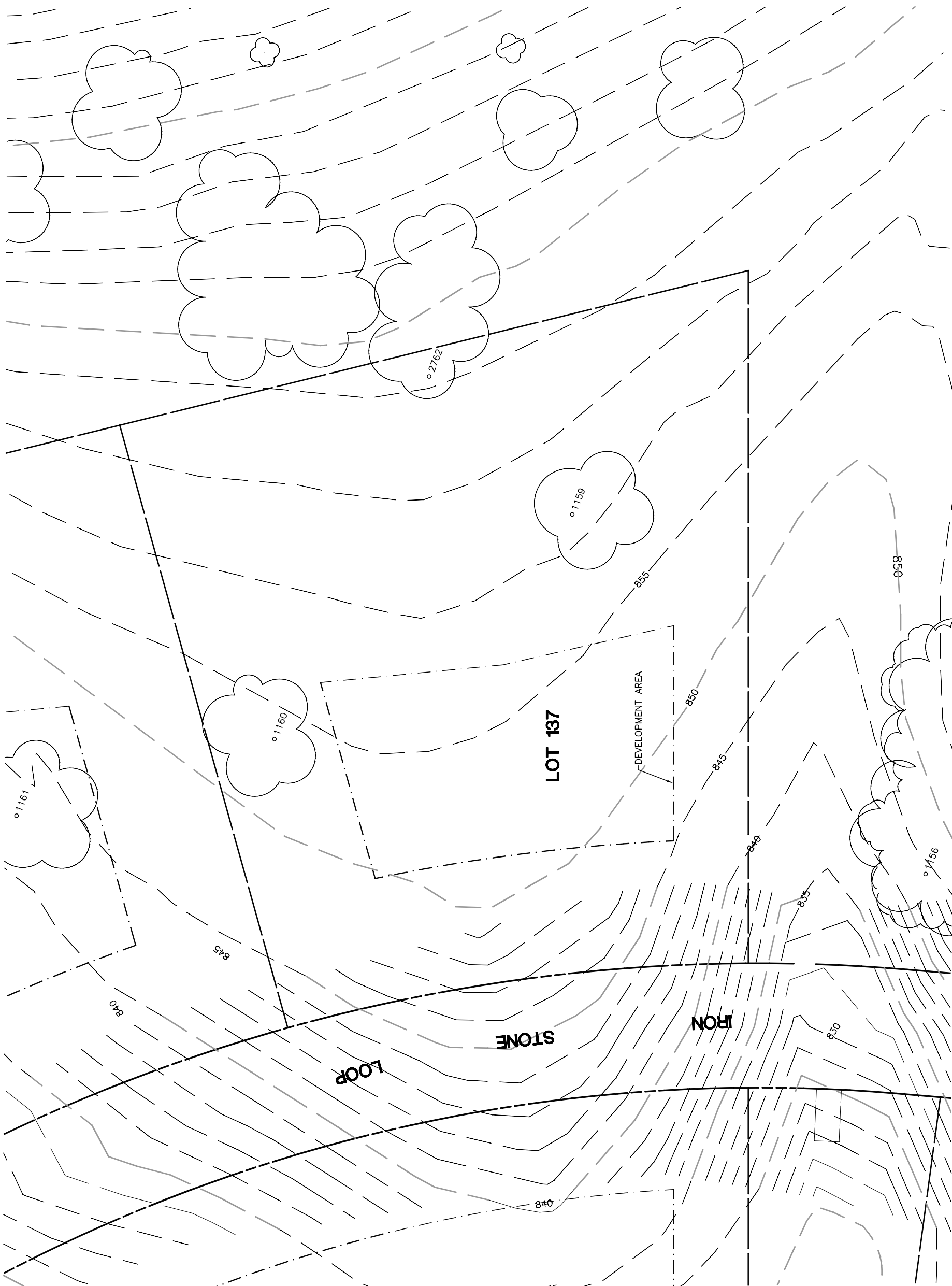


Lot 137				
Tree	Diameter (# of Trunks)	Type	Health	Must Save (visual mitigation)
1159	22	VALLEY	68%	X
1160	22	BLUE	72%	X
2762	28 (2)	BLUE	70%	X



REV.	BY	DATE	DESCRIPTION

NOTE: TREE DATA BASED ON OAK TREE ASSESSMENT BY JACK BRAZEAU ON 10.24.00.

NOTE: ALL TREES OUTSIDE OF BUILDING ENVELOPE TO BE PROTECTED. TREES MAY BE REMOVED BY PERMIT IF NECESSARY FOR DRIVEWAY ACCESS BUT REMOVAL WILL BE MINIMIZED.

NOTE: ALL TREE LOCATIONS WITHIN BUILDING ENVELOPE TO BE VERIFIED PRIOR TO PERMITTING. PLOT: 7/26/02

32234-000\ALPHOUSE\LOTS\

**eda**  
 eda professionals  
 civil engineers • land surveyors • land planners  
 1914 85th Street, Suite 100 • San Diego, CA 92123  
 Tel: 619-594-9888 • email: eda@eda.com

**INDIVIDUAL SITE PLANS**  
**SANTA YSABEL RANCH**  
**COAL 99-0229**  
**LOT 137**

**SHEET**  
**1**  
**OF 1**