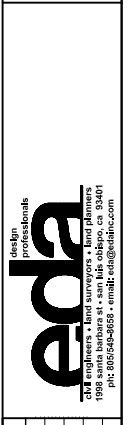
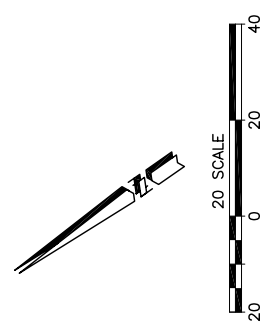
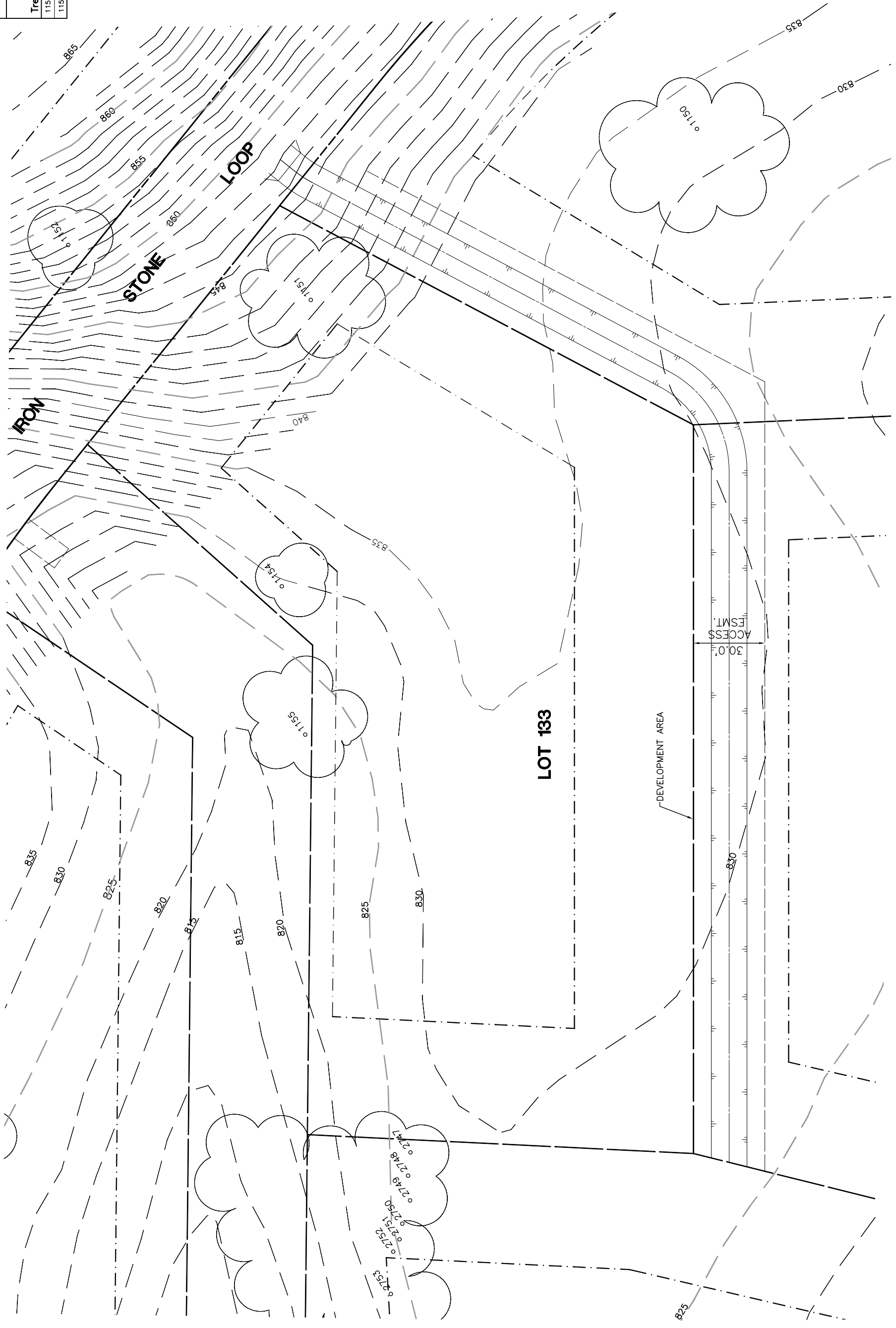


| Lot 133 | | | | |
|---------|----------|--------|--------|-------------------------------|
| Tree | Diameter | Type | Health | Must Save (visual mitigation) |
| 1151 | 34 | VALLEY | 80% | X |
| 1154 | 32 | VALLEY | 40% | X |



| REV. | BY | DATE | DESCRIPTION |
|------|----|------|-------------|
| | | | |
| | | | |
| | | | |

NOTE:
 ALL TREE LOCATIONS WITHIN
 BUILDING ENVELOPE TO BE
 VERIFIED PRIOR TO PERMITTING

NOTE:
 ALL TREES OUTSIDE OF BUILDING ENVELOPE
 TO BE PROTECTED. TREES MAY BE REMOVED
 BY PERMIT IF NECESSARY FOR DRIVEWAY
 ACCESS BUT REMOVAL WILL BE MINIMIZED.

NOTE:
 TREE DATA BASED ON OAK TREE
 ASSESSMENT BY JACK BRAZEAU ON 10.24.00.