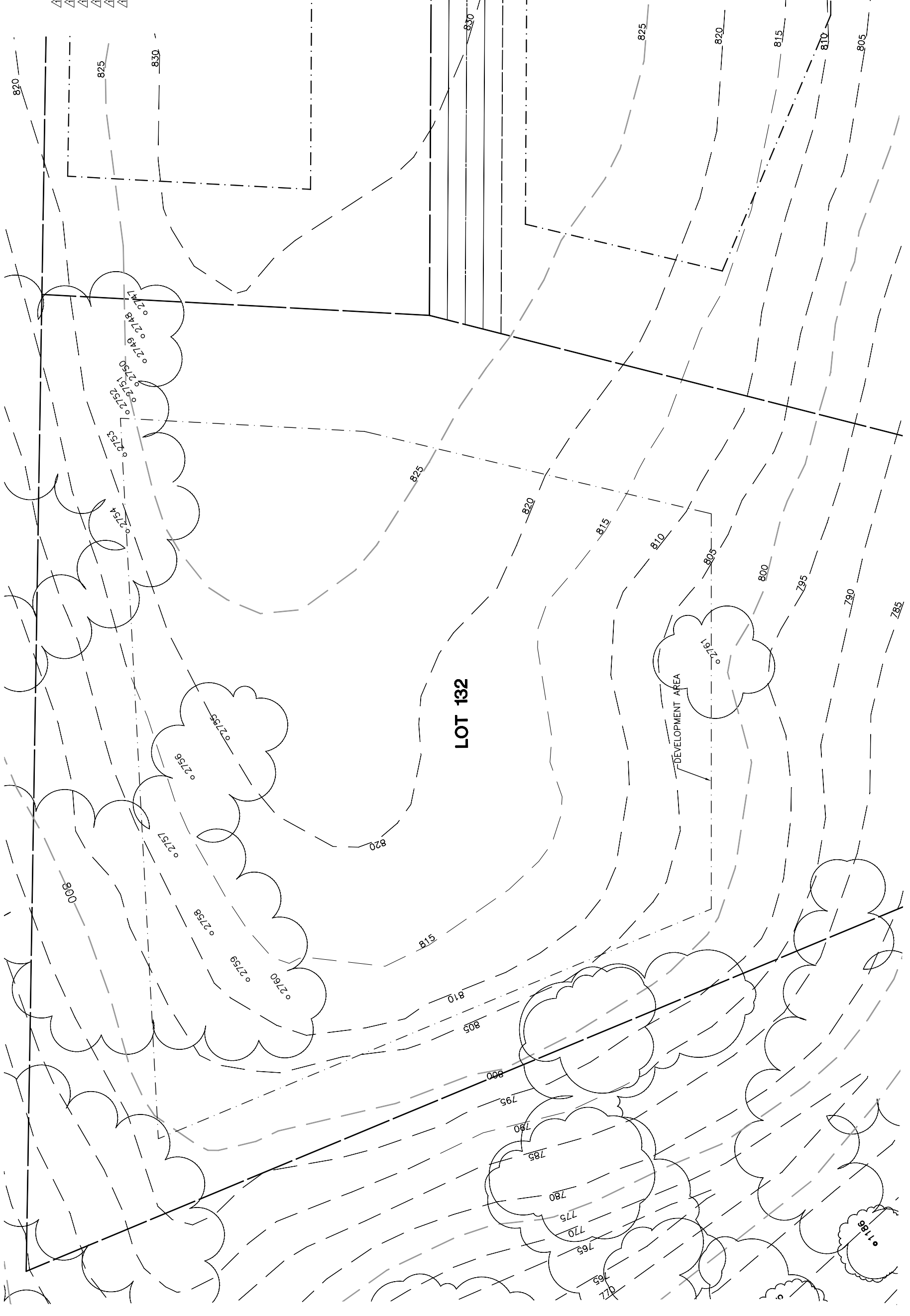


Lot 132				
Tree	Diameter	Type	Health	Must Save (Visual mitigation)
2747	11	VALLEY	20%	X
2748	12	BLUE	40%	X
2749	16	BLUE	45%	X
2750	24	BLUE	50%	X
2751	29	BLUE	55%	X
2752	7	BLUE	35%	X
2753	11	BLUE	55%	X
2754	31	BLUE	70%	X
2755	34	BLUE	75%	X
2756	9	BLUE	30%	X
2757	10 (3)	BLUE	75%	X
2758	11 (2)	BLUE	70%	X
2759	12 (2)	BLUE	70%	X
2760	12 (4)	BLUE	75%	X
2761	22	BLUE	75%	X



NOTE: TREE DATA BASED ON OAK TREE ASSESSMENT BY JACK BRAZEL ON 10.24.00.

NOTE: ALL TREES OUTSIDE OF BUILDING ENVELOPE TO BE PROTECTED. TREES MAY BE REMOVED BY PERMIT IF NECESSARY FOR DRIVEWAY ACCESS BUT REMOVAL WILL BE MINIMIZED.

NOTE: ALL TREE LOCATIONS WITHIN BUILDING ENVELOPE TO BE VERIFIED PRIOR TO PERMITTING

REV.	BY	DATE	DESCRIPTION
1		05.16.03	PER CONDITIONS



INDIVIDUAL SITE PLANS
SANTA YSABEL RANCH
COAL 99-0229
LOT 132