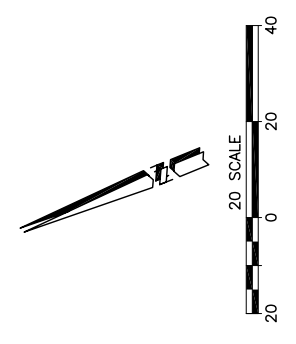
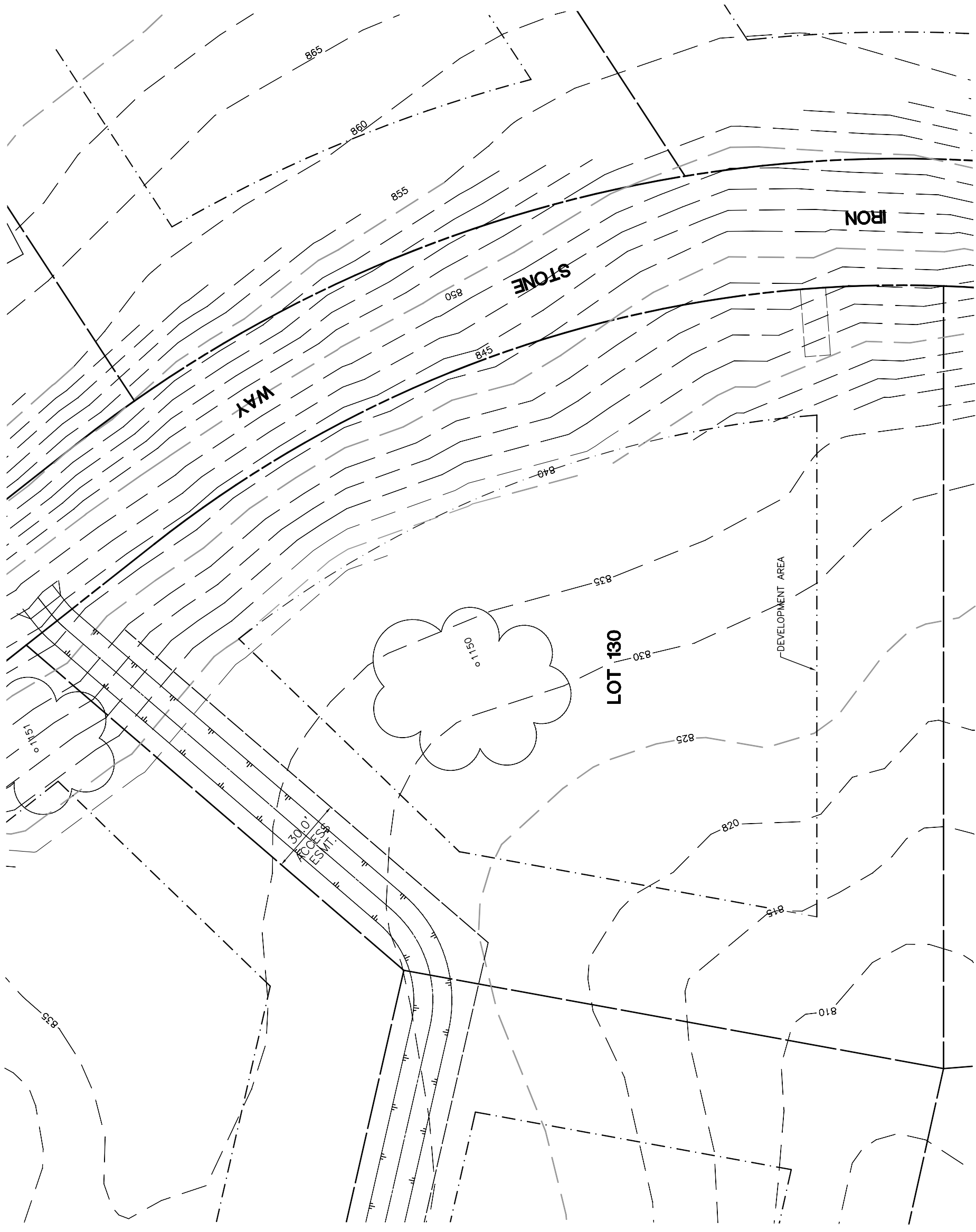


| Lot 130 | | | |
|---------|----------|--------|-------------------------------|
| Tree | Diameter | Type | Health |
| 1150 | 51 | VALLEY | 68% |
| | | | Must Save (visual mitigation) |
| | | | X |



NOTE: DATA BASED ON OAK TREE TREE ASSESSMENT BY JACK BRAZEL ON 10.24.00.

NOTE: ALL TREES OUTSIDE OF BUILDING ENVELOPE TO BE PROTECTED. TREES MAY BE REMOVED BY PERMIT IF NECESSARY FOR DRIVEWAY ACCESS BUT REMOVAL WILL BE MINIMIZED.

NOTE: ALL TREE LOCATIONS WITHIN BUILDING ENVELOPE TO BE VERIFIED PRIOR TO PERMITTING

| REV. | BY | DATE | DESCRIPTION |
|------|----|------|-------------|
| | | | |
| | | | |
| | | | |



INDIVIDUAL SITE PLANS
SANTA YSABEL RANCH
COAL 99-0229
LOT 130