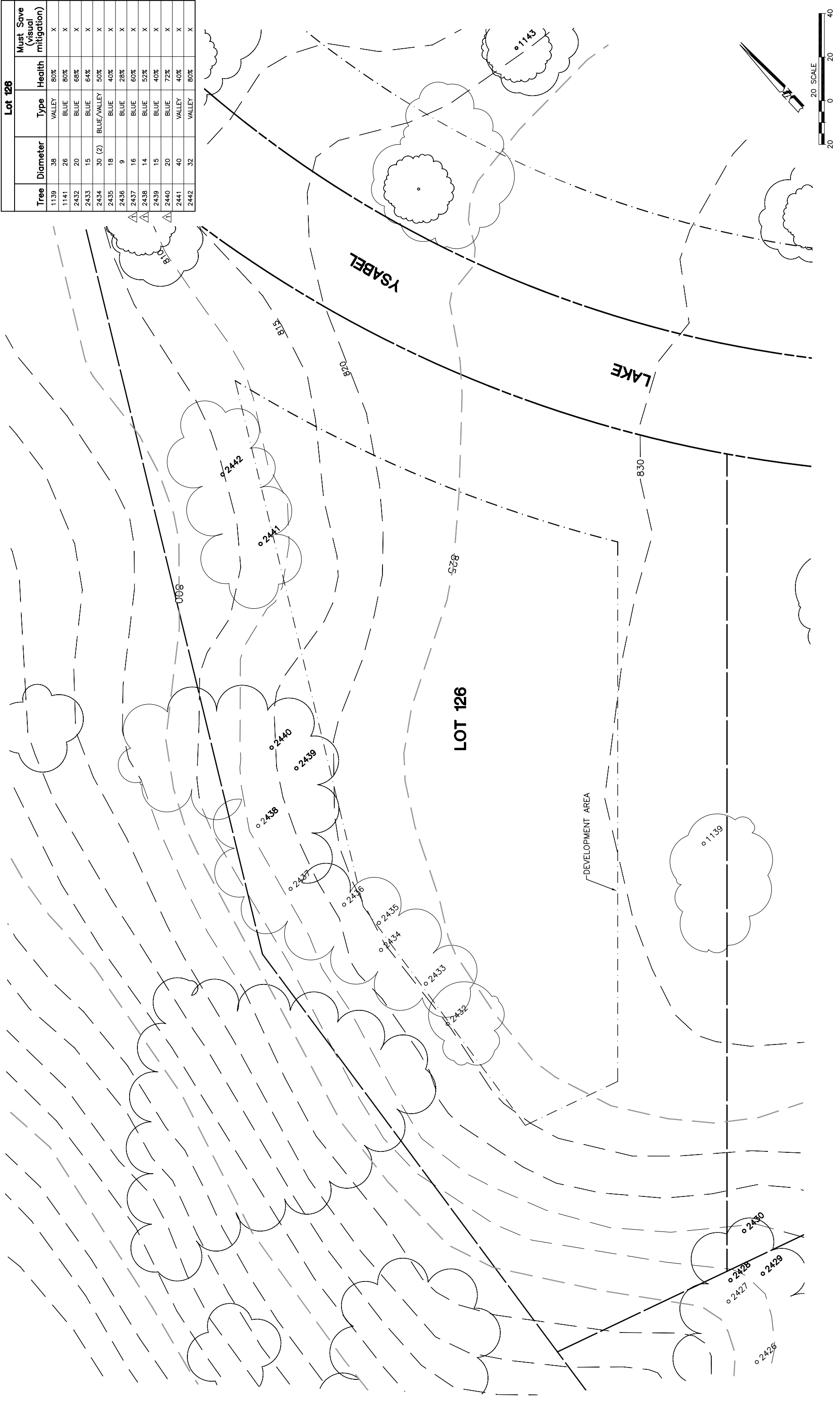


Lot 126				
Tree	Diameter	Type	Health	Must Save (visual mitigation)
1139	38	VALLEY	80%	X
1141	26	BLUE	80%	X
2432	20	BLUE	68%	X
2433	15	BLUE	64%	X
2434	30 (2)	BLUE/VALLEY	50%	X
2435	18	BLUE	40%	X
2436	9	BLUE	28%	X
2437	16	BLUE	60%	X
2438	14	BLUE	52%	X
2439	15	BLUE	40%	X
2440	20	BLUE	72%	X
2441	40	VALLEY	40%	X
2442	32	VALLEY	80%	X



<p>NOTE: TREE DATA BASED ON OAK TREE ASSESSMENT BY JACK BRAZEL ON 10.24.00.</p>	<p>NOTE: ALL TREES OUTSIDE OF BUILDING ENVELOPE TO BE PROTECTED. TREES MAY BE REMOVED BY PERMIT IF NECESSARY FOR DRIVEWAY ACCESS BUT REMOVAL WILL BE MINIMIZED.</p>	<p>NOTE: ALL TREE LOCATIONS WITHIN BUILDING ENVELOPE TO BE VERIFIED PRIOR TO PERMITTING</p>	REV.	BY	DATE	DESCRIPTION
			1		05.16.03	PER CONDITIONS
<p>INDIVIDUAL SITE PLANS SANTA YSABEL RANCH COAL 99-0229 LOT 126</p>						
<p>eda civil engineers • land surveyors • land planners 1918 S. Bascom Avenue, Suite 200, San Jose, CA 95128 tel: 408.951.9600 • fax: 408.951.9601 • email: info@eda.com</p>						
<p>SHEET <b>1</b> OF 1</p>						