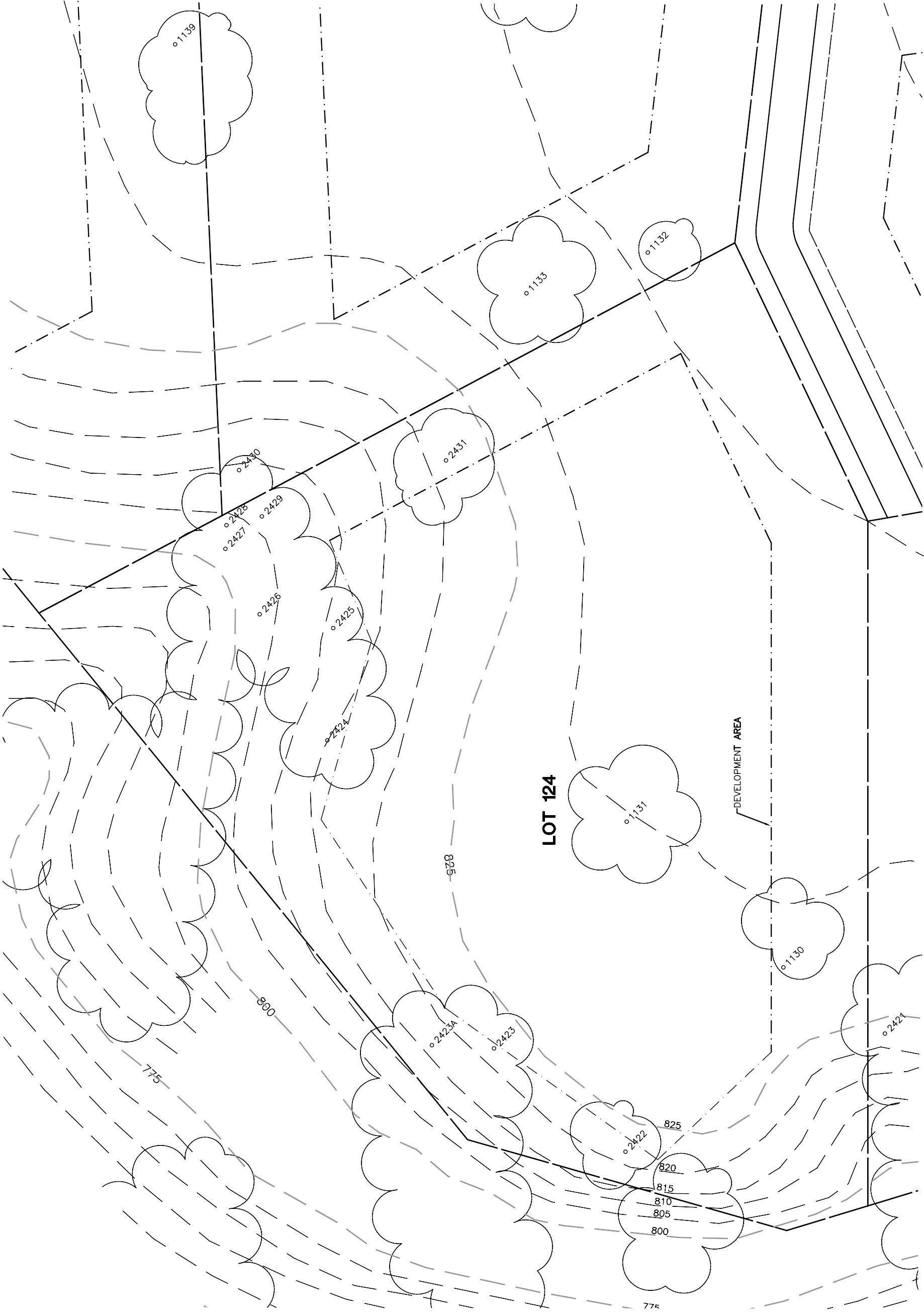
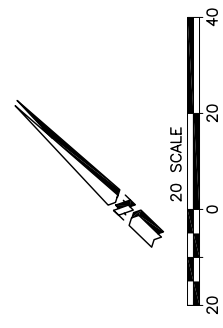


Lot 124				
Tree	Diameter	Type	Health	Must Save (visual mitigation)
1130	16	BLUE	36%	X
1131	41	BLUE	80%	X
2422	11	BLUE	72%	X
2423A	20	BLUE	60%	X
2423	26	BLUE	72%	X
2424	28	BLUE	50%	X
2425	18	BLUE	78%	X
2426	22	BLUE	72%	X
2427	10	BLUE	32%	X
2428	6	BLUE	28%	X
2429	32	BLUE	80%	X
2431	19	BLUE	80%	X



NOTE:
TREE DATA BASED ON OAK TREE ASSESSMENT BY JACK BRAZEAL ON 10.24.00.

NOTE:
ALL TREES OUTSIDE OF BUILDING ENVELOPE TO BE PROTECTED. TREES MAY BE REMOVED BY PERMIT IF NECESSARY FOR DRIVEWAY ACCESS BUT REMOVAL WILL BE MINIMIZED.

NOTE:
ALL TREE LOCATIONS WITHIN BUILDING ENVELOPE TO BE VERIFIED PRIOR TO PERMITTING

REV.	BY	DATE	DESCRIPTION
1		05.16.03	PER CONDITIONS

eda
eda professionals
civil engineers • land surveyors • land planners
1914 8th Street, Suite 200
Berkeley, CA 94710
ph: 866.546.8888 • email: eda@eda.com

INDIVIDUAL SITE PLANS
SANTA YSABEL RANCH
COAL 99-0229
LOT 124

SHEET
1
OF 1