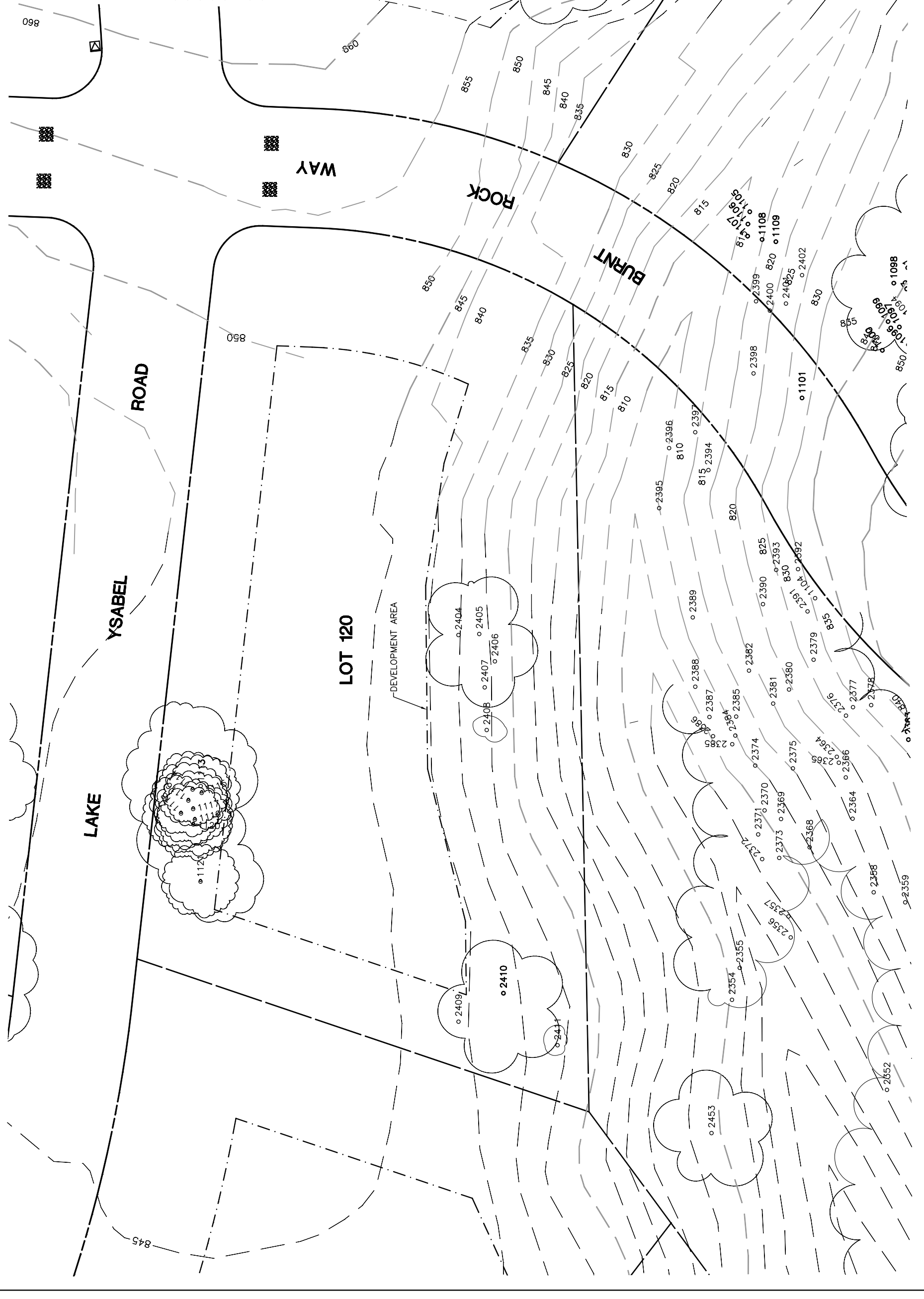


Lot 120			
Tree (# of Trunks)	Type	Health	Must Save (visual mitigation)
1113	9 BLUE	24%	X
1114	9 BLUE	24%	X
1115	8 BLUE	16%	X
1116	9 BLUE	32%	X
1117	5 BLUE	12%	X
1118	19 BLUE	52%	X
1119	7 BLUE	12%	X
1120	8 BLUE	24%	X
1121	28 VALLEY	80%	X
2404	14 VALLEY	60%	X
2405	9 BLUE	40%	X
2406	10 (4) BLUE	40%	X
2407	8 (2) BLUE	32%	X
2408	8 BLUE	40%	X
2409	12 BLUE	48%	X
2410	36 (3) BLUE	76%	X
2411	8 BLUE	32%	X

NOTE: ● = ORIGINAL DATA
 ○ = MODIFIED BY
 ALTHOUSE
 & MEADE, INC.



NOTE: TREE DATA BASED ON OAK TREE ASSESSMENT BY JACK BRAZEL ON 10.24.00.	NOTE: ALL TREES OUTSIDE OF BUILDING ENVELOPE TO BE PROTECTED. TREES MAY BE REMOVED BY PERMIT IF NECESSARY FOR DRIVEWAY ACCESS BUT REMOVAL WILL BE MINIMIZED.	NOTE: ALL TREE LOCATIONS WITHIN BUILDING ENVELOPE TO BE VERIFIED PRIOR TO PERMITTING	REV. 1	DATE 05.16.03	DESCRIPTION PER CONDITIONS
			BY		

32234-000\ALTHOUSE\LOT5.PLT 7/26/02

eda
 civil engineers • land surveyors • land planners
 1919 S. Bascom Avenue, Suite 200, San Jose, CA 95128
 phone: 408.253.8888 • email: info@eda.com

INDIVIDUAL SITE PLANS
 SANTA YSABEL RANCH
 COAL 99-0229
 LOT 120

S H E E T
1
 OF 1