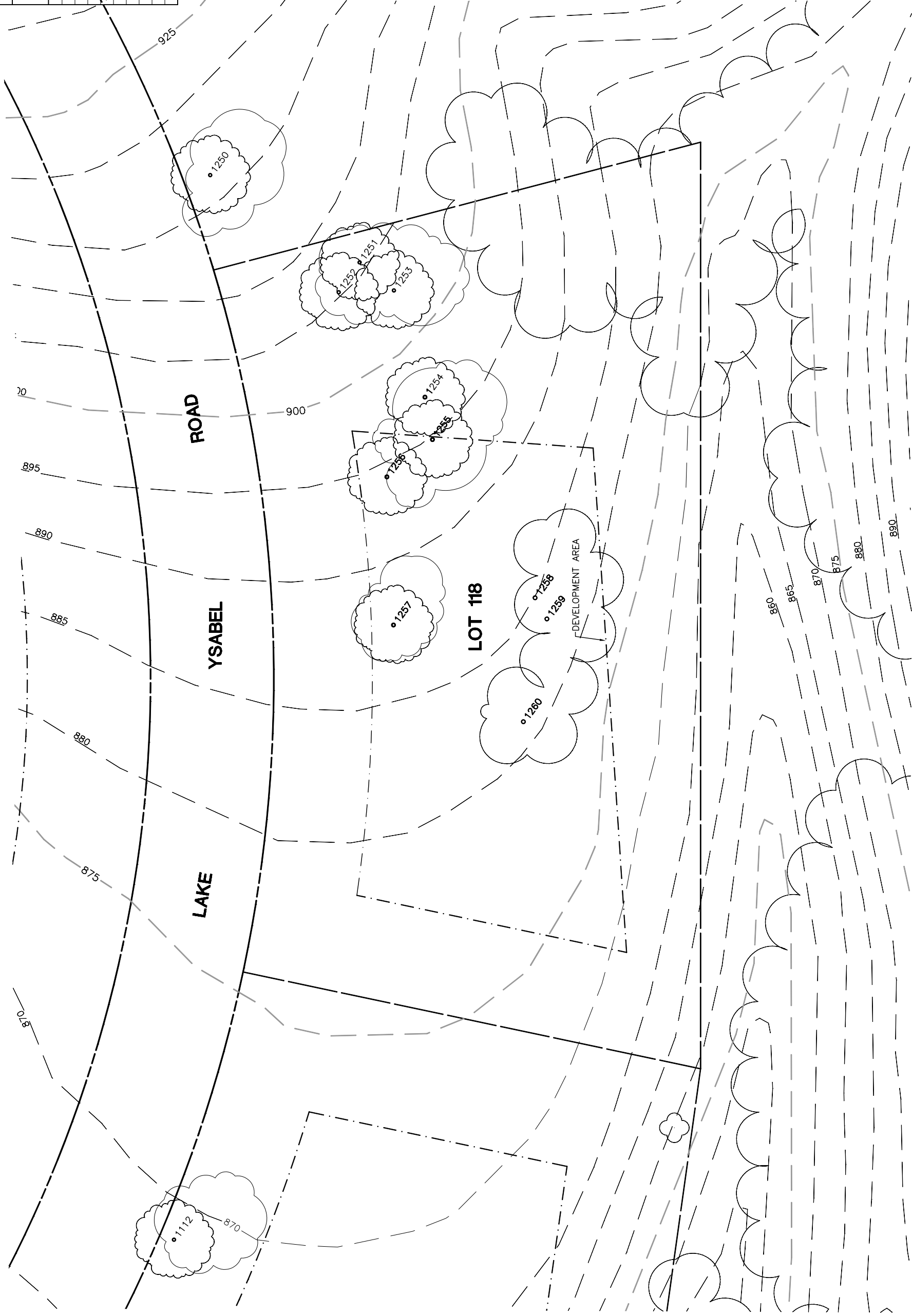


**Lot 118**

Tree	Diameter (# of Trunks)	Type	Health	Must Save (visual mitigation)
1251	14	BLUE	48%	X
1252	18	BLUE	60%	X
1253	17	BLUE	48%	X
1254	28	BLUE	60%	X
1255	14	BLUE	40%	X
1256	10	BLUE	60%	X
1257	24	BLUE	72%	X
1258	32	BLUE	68%	X
1259	16	BLUE	28%	X
1260	14 (3)	BLUE	60%	X



NOTE: TREE DATA BASED ON OAK TREE ASSESSMENT BY JACK BRAZEL ON 10.24.00.

NOTE: ALL TREES OUTSIDE OF BUILDING ENVELOPE TO BE PROTECTED. TREES MAY BE REMOVED BY PERMIT IF NECESSARY FOR DRIVEWAY ACCESS BUT REMOVAL WILL BE MINIMIZED.

NOTE: ALL TREE LOCATIONS WITHIN BUILDING ENVELOPE TO BE VERIFIED PRIOR TO PERMITTING

REV.	BY	DATE	DESCRIPTION



INDIVIDUAL SITE PLANS  
SANTA YSABEL RANCH  
COAL 99-0229  
LOT 118