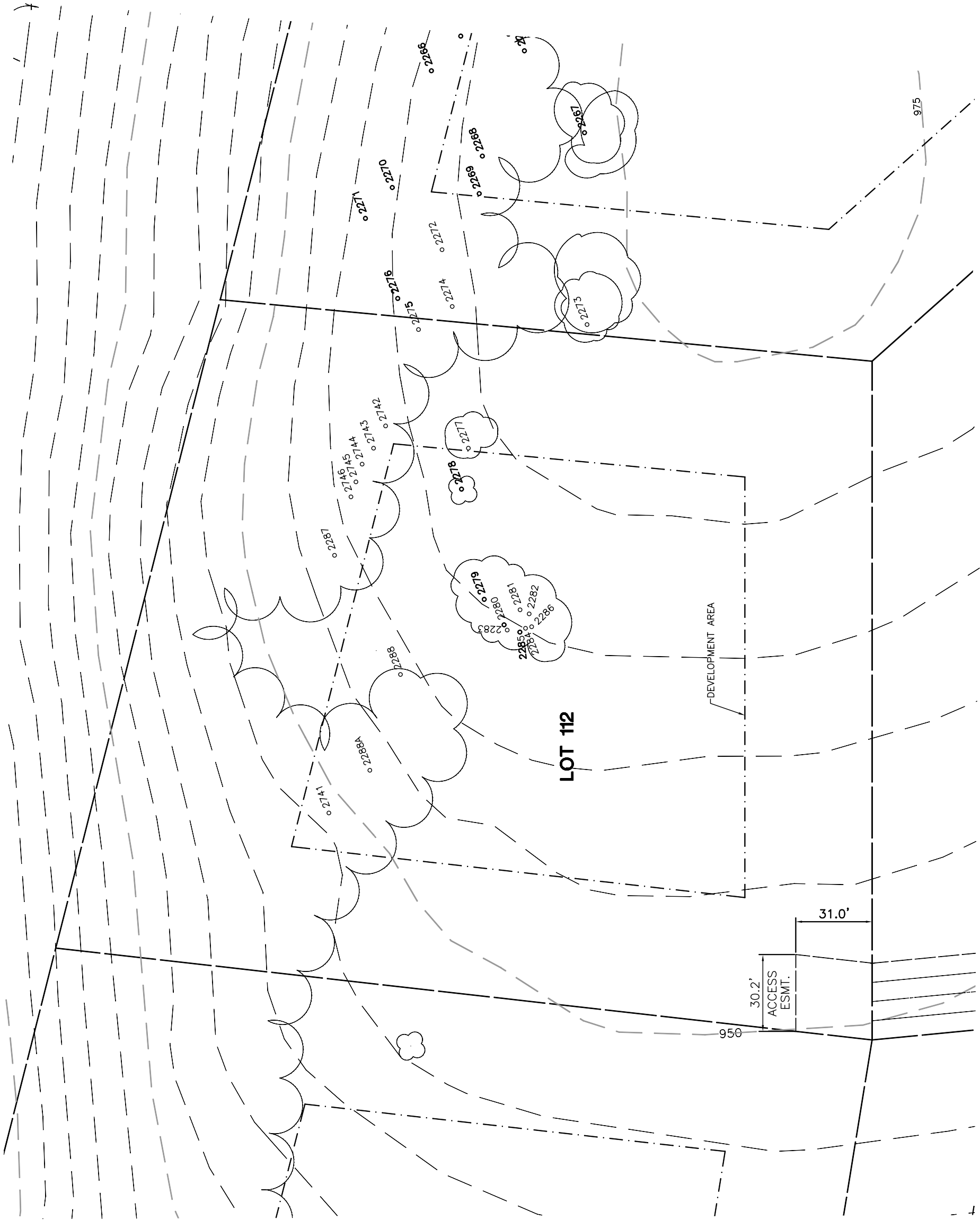


Lot 112				
Tree (# of Trunks)	Diameter	Type	Health	Must Save (visual mitigation)
△ 2275	14	BLUE	40%	X
△ 2277	8	BLUE	48%	X
△ 2278	12	BLUE	60%	X
△ 2279	NA	HOLLY LEAF	0%	X
△ 2280	NA	HOLLY LEAF	0%	X
△ 2281	NA	HOLLY LEAF	0%	X
△ 2282	NA	HOLLY LEAF	0%	X
△ 2283	NA	HOLLY LEAF	0%	X
△ 2284	9	BLUE	48%	X
△ 2285	NA	HOLLY LEAF	0%	X
△ 2286	NA	HOLLY LEAF	0%	X
△ 2287	16	BLUE	48%	X
△ 2288	8	BLUE	60%	X
△ 2288A	17	BLUE	68%	X
△ 2741	23	BLUE	70%	X
△ 2742	10	BLUE	40%	X
△ 2743	7	BLUE	25%	X
△ 2744	5	BLUE	20%	X
△ 2745	11	BLUE	35%	X
△ 2746	14 (3)	BLUE	45%	X



NOTE: TREE DATA BASED ON OAK TREE ASSESSMENT BY JACK BRAZEL ON 10.24.00.

NOTE: ALL TREES OUTSIDE OF BUILDING ENVELOPE TO BE PROTECTED. TREES MAY BE REMOVED BY PERMIT IF NECESSARY FOR DRIVEWAY ACCESS BUT REMOVAL WILL BE MINIMIZED.

NOTE: ALL TREE LOCATIONS WITHIN BUILDING ENVELOPE TO BE VERIFIED PRIOR TO PERMITTING

REV.	BY	DATE	DESCRIPTION
1		05.16.03	PER CONDITIONS



INDIVIDUAL SITE PLANS  
SANTA YSABEL RANCH  
COAL 99-0229  
LOT 112