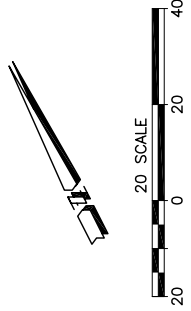
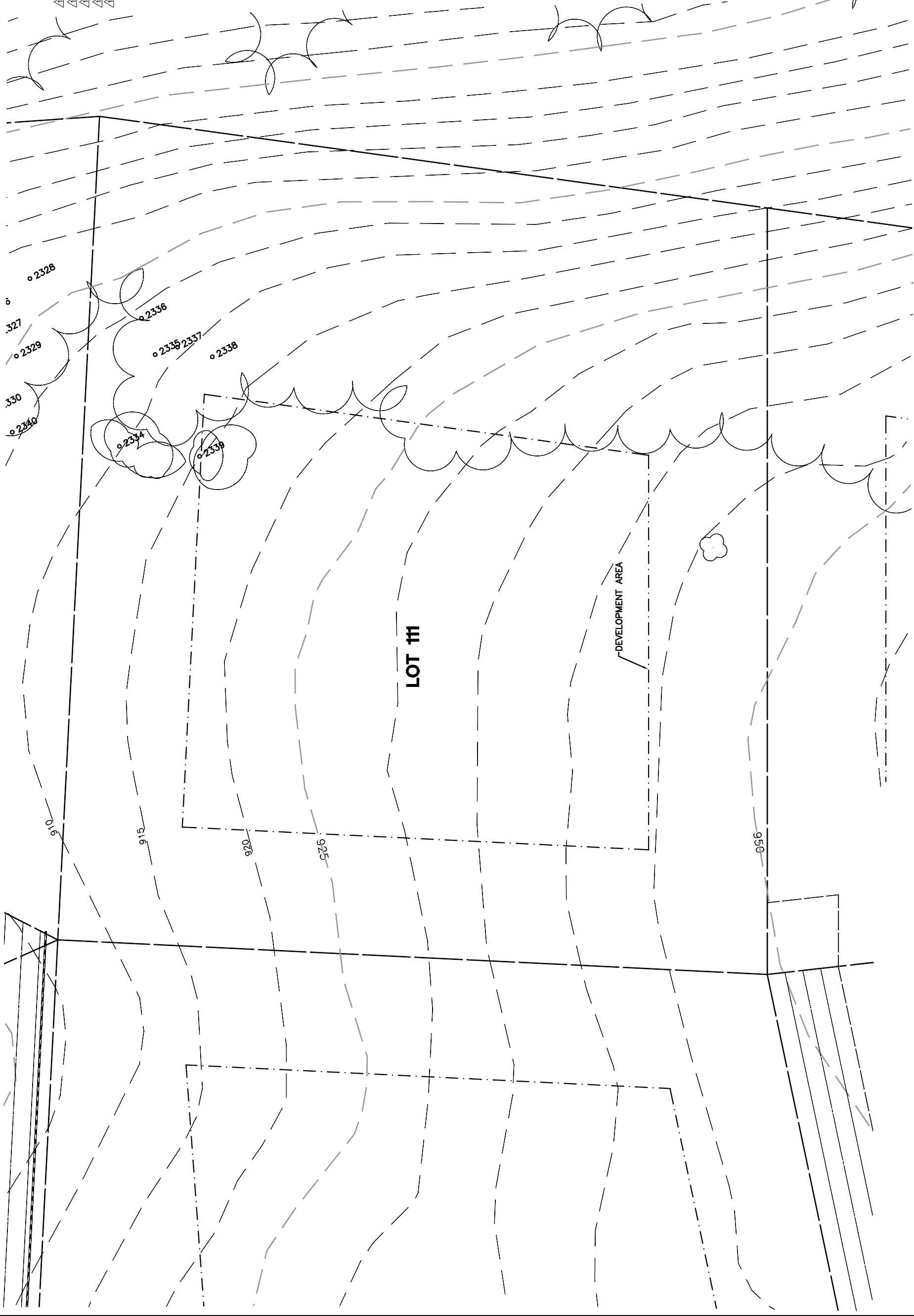


Lot 111				
Tree	Diameter	Type	Health	Must Save (visual mitigation)
△ 2334	18	BLUE	48%	X
△ 2335	4	BLUE	12%	X
△ 2336	7	BLUE	44%	X
△ 2337	13	BLUE	40%	X
△ 2338	14	BLUE	52%	X
△ 2339	13	BLUE	48%	X



REV.	BY	DATE	DESCRIPTION
1		05.16.03	PER CONDITIONS

NOTE:
 ALL TREE LOCATIONS WITHIN BUILDING ENVELOPE TO BE VERIFIED PRIOR TO PERMITTING

NOTE:
 ALL TREES OUTSIDE OF BUILDING ENVELOPE TO BE PROTECTED. TREES MAY BE REMOVED BY PERMIT IF NECESSARY FOR DRIVEWAY ACCESS BUT REMOVAL WILL BE MINIMIZED.

NOTE:
 TREE DATA BASED ON OAK TREE ASSESSMENT BY JACK BRAZEL ON 10.24.00.