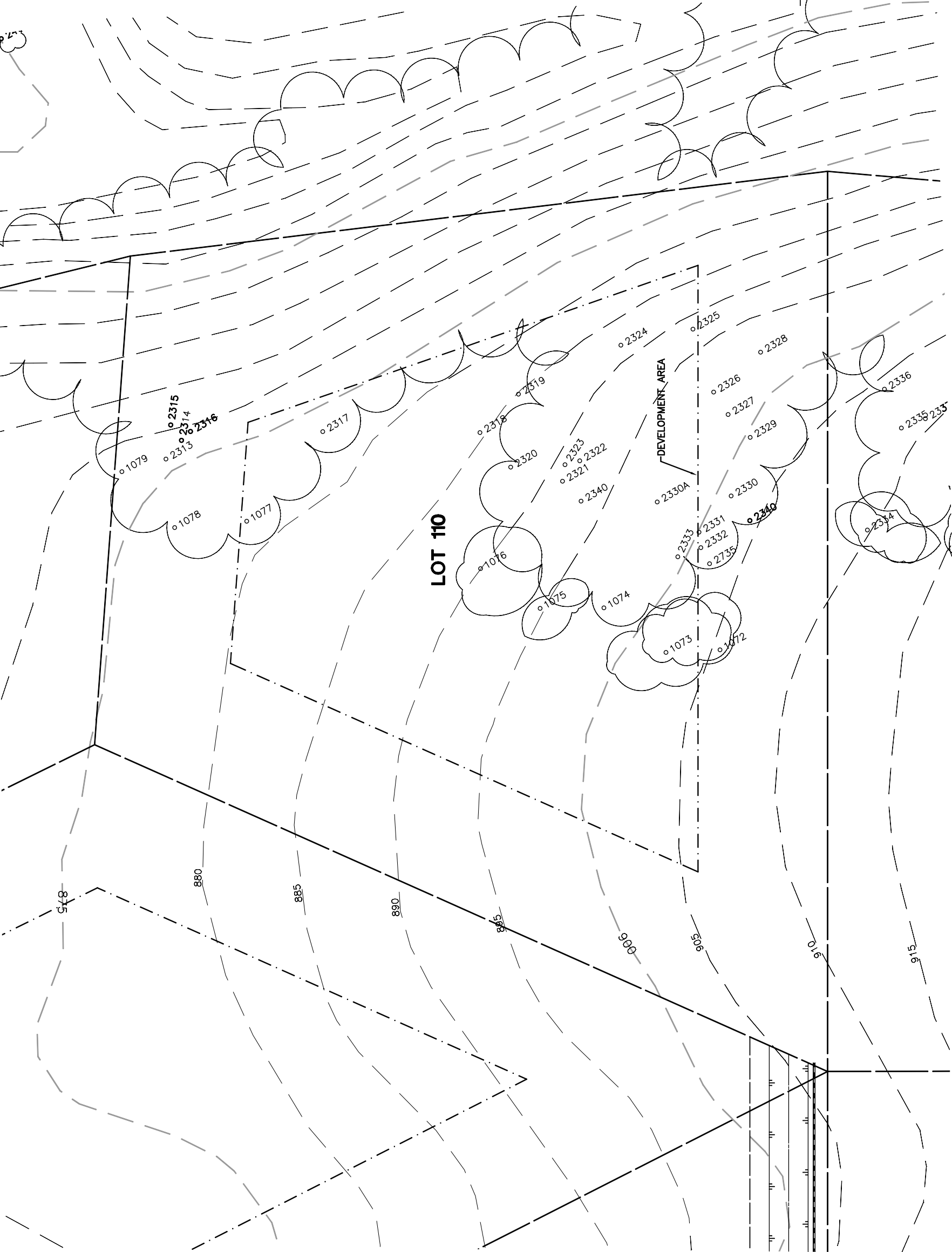


Lot 110				Must Save (visual mitigation)
Tree	Diameter	Type	Health	
1072	8	BLUE	36%	
1073	14	BLUE	36%	
1074	9	BLUE	36%	
1075	9	BLUE	0%	
1076	7	BLUE	40%	X
1077	26	BLUE	72%	X
1078	22	BLUE	52%	X
1079	15	BLUE	40%	X
1079	8	BLUE	28%	X
1079	18	BLUE	48%	X
1079	14	BLUE	28%	X
1079	7	BLUE	28%	X
1079	12	BLUE	56%	X
1079	6	BLUE	28%	X
1079	10	BLUE	64%	X
1079	10	BLUE	56%	X
1079	8	BLUE	24%	X
1079	16	BLUE	48%	X
1079	8	BLUE	32%	X
1079	9	BLUE	24%	X
1079	7	BLUE	24%	X
1079	12	BLUE	28%	X
1079	8	BLUE	28%	X
1079	10 (2)	BLUE2STM	35%	X
1079	20	BLUE	24%	X
1079	12	BLUE	24%	X
1079	9	BLUE	20%	X
1079	8	BLUE	28%	X
1079	7	BLUE	20%	X
1079	10	BLUE	24%	X
1079	5	BLUE	20%	X



INDIVIDUAL SITE PLANS
 SANTA YSABEL RANCH
 COAL 99-0229
 LOT 110



REV.	BY	DATE	DESCRIPTION

NOTE:
 ALL TREE LOCATIONS WITHIN
 BUILDING ENVELOPE TO BE
 VERIFIED PRIOR TO PERMITTING

NOTE:
 ALL TREES OUTSIDE OF BUILDING ENVELOPE
 TO BE PROTECTED. TREES MAY BE REMOVED
 BY PERMIT IF NECESSARY FOR DRIVEWAY
 ACCESS BUT REMOVAL WILL BE MINIMIZED.

NOTE:
 TREE DATA BASED ON OAK TREE
 ASSESSMENT BY JACK BRAZEL ON 10.24.00.