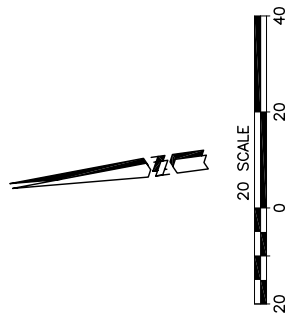
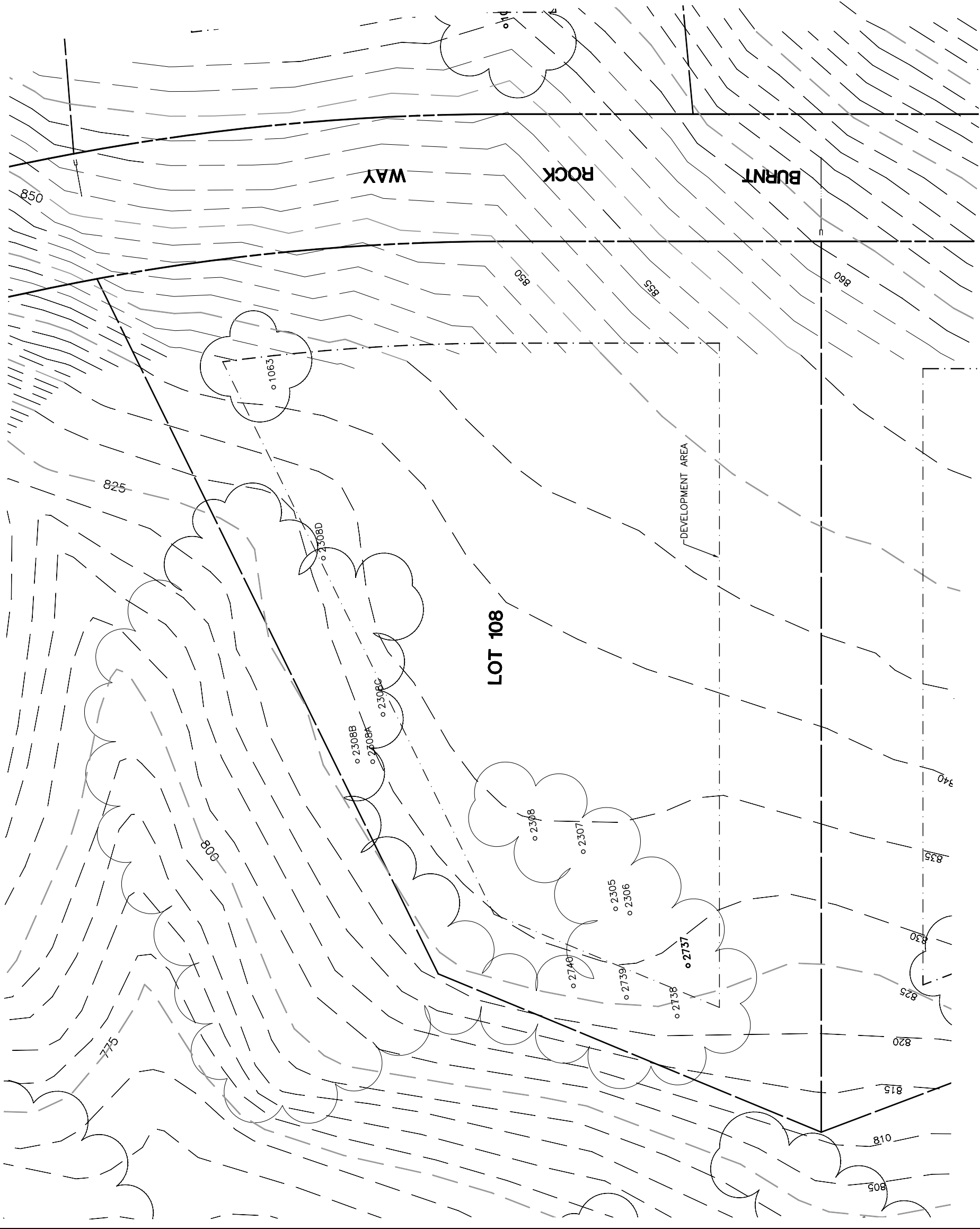


Lot 108				
Tree	Diameter	Type	Health	Must Save (visual mitigation)
1063	17	BLUE	60%	X
2305	20	BLUE	65%	X
2306	19	BLUE	72%	X
2307	8	BLUE	24%	X
2308A	8	BLUE	32%	X
2308B	8	BLUE	40%	X
2308C	9	BLUE	48%	X
2308D	16	BLUE	72%	X
2308	24	BLUE	48%	X
2737	8,6 (2)	BLUE	45%	X
2738	14	BLUE	40%	X
2739	6	BLUE	30%	X
2740	22	BLUE	50%	X



REV.	BY	DATE	DESCRIPTION

NOTE:  
 ALL TREE LOCATIONS WITHIN  
 BUILDING ENVELOPE TO BE  
 VERIFIED PRIOR TO PERMITTING

NOTE:  
 ALL TREES OUTSIDE OF BUILDING ENVELOPE  
 TO BE PROTECTED. TREES MAY BE REMOVED  
 BY PERMIT IF NECESSARY FOR DRIVEWAY  
 ACCESS BUT REMOVAL WILL BE MINIMIZED.

NOTE:  
 TREE DATA BASED ON OAK TREE  
 ASSESSMENT BY JACK BRAZEL ON 10.24.00.