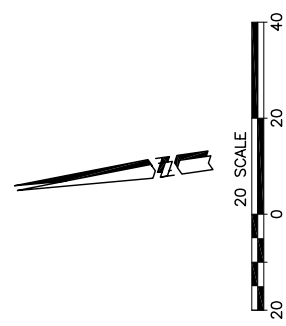
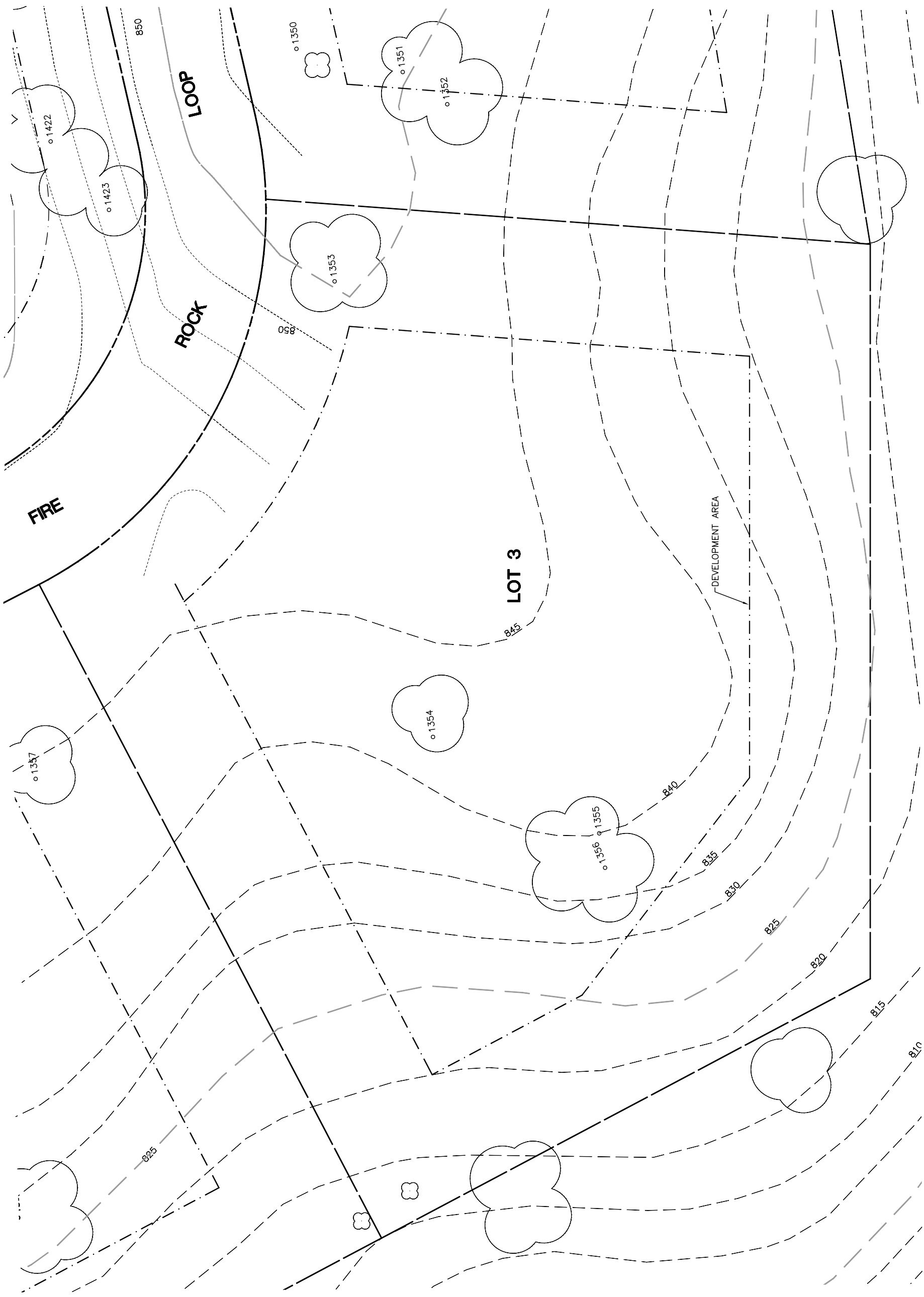


**Lot 3**

Tree	Diameter	Type	Health	Must Save (visual mitigation)
1353	38	BLUE	36%	X
1354	16	BLUE	68%	X
1355	39	BLUE	32%	X
1356	28	BLUE	48%	X



<p>NOTE: DATA BASED ON OAK TREE ASSESSMENT BY JACK BRAZEAU ON 10.24.00.</p>	<p>NOTE: ALL TREES OUTSIDE OF BUILDING ENVELOPE TO BE PROTECTED. TREES MAY BE REMOVED BY PERMIT IF NECESSARY FOR DRIVEWAY ACCESS BUT REMOVAL WILL BE MINIMIZED.</p>	<p>NOTE: ALL TREE LOCATIONS WITHIN BUILDING ENVELOPE TO BE VERIFIED PRIOR TO PERMITTING</p>	REV.	BY	DATE	DESCRIPTION

**eda**  
eda professionals  
 civil engineers • land surveyors • land planners  
 1914 8th Street, Suite 200 • San Diego, CA 92101  
 phone: 619.594.8888 • email: info@edapro.com

**INDIVIDUAL SITE PLANS**  
**SANTA YSABEL RANCH**  
**COAL 99-0229**  
**LOT 3**

SHEET  
**1**  
 OF 1