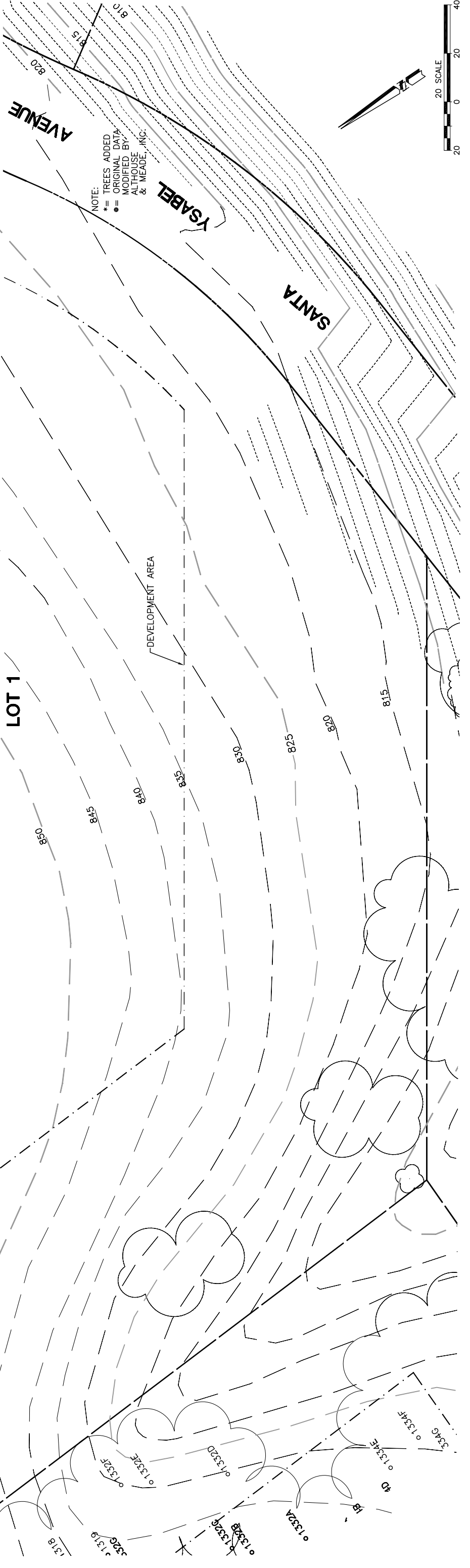


Lot 1				
Tree	Diameter	Type	Health	Must Save (visual mitigation)
1285	34	VALLEY	68%	X
1289	26	BLUE	60%	X
1290	40	BLUE	60%	X
1291	18	BLUE	40%	
1292	9	BLUE	8%	
1293	19	BLUE	56%	X
1294	14	BLUE	24%	X
1298	18	BLUE	40%	X
1299	28	BLUE	72%	X
1300	24	BLUE	48%	
1301	16	BLUE	40%	
1302	26	BLUE	60%	X
1303	18	BLUE	68%	X
1304	20	BLUE	60%	X
1305	34	BLUE	76%	X
1306	11	BLUE	24%	X
1307	10	BLUE	32%	X
1309	24	BLUE	60%	X
1310	10	BLUE	65%	X
1311	14	BLUE	50%	X
1314	18	BLUE	72%	X
1312	24	BLUE	40%	X
1295	18	BLUE	40%	X
1296	17	BLUE	32%	X
1297	16	BLUE	40%	X
1287	17	BLUE	56%	X
1288	16	BLUE	56%	X
1458	17	BLUE	52%	X
1459	34	BLUE	60%	X
1460	12	BLUE	40%	X
1461	18	BLUE	60%	X
1462	28	BLUE	60%	X
1463	19	BLUE	40%	X
1464	10	BLUE	12%	X



NOTE:
 * = TREES ADDED
 ORIGINAL DATA
 MODIFIED BY:
 ALTHOUSE
 & MEADE, INC.

<p>NOTE: TREE DATA BASED ON OAK TREE ASSESSMENT BY JACK BRAZEALE ON 10.24.00.</p>		<p>NOTE: ALL TREES OUTSIDE OF BUILDING ENVELOPE TO BE PROTECTED. TREES MAY BE REMOVED BY PERMIT IF NECESSARY FOR DRIVEWAY ACCESS BUT REMOVAL WILL BE MINIMIZED.</p>		<p>NOTE: ALL TREE LOCATIONS WITHIN BUILDING ENVELOPE TO BE VERIFIED PRIOR TO PERMITTING</p>	
REV.	BY	DATE	DESCRIPTION	REV.	BY

32234-000\ALTHOUSE\LOTS\

PLTID: 7/26/02

eda
 civil engineers • land surveyors • landscape architects
 1998 main street st • san diego, ca 92101
 PH: 619-444-9999 • WWW.EDACONSULTING.COM

INDIVIDUAL SITE PLANS
 SANTA YSABEL RANCH
 COAL 99-0229
 LOT 1

SHEET
1
 OF 1